

COMPLETE line

# Shop floor productivity

Design software, ID solutions, industrial tools, and value-add solutions

# Cabinet Confidence

## Your trusted partner for the control cabinet

From connectivity to control, Phoenix Contact gives you the confidence you need in your production systems. Our longstanding commitment to quality and innovation will give you the peace of mind and competitive edge to succeed in today's highly complex manufacturing world.



NETWORKING



SIGNAL SWITCHING AND CONDITIONING



POWER RELIABILITY



CONNECTIVITY



SAFETY



AUTOMATION AND CONTROL



LIMITED LIFETIME  
**WARRANTY**

BUILD WITH CONFIDENCE

# Shop floor productivity

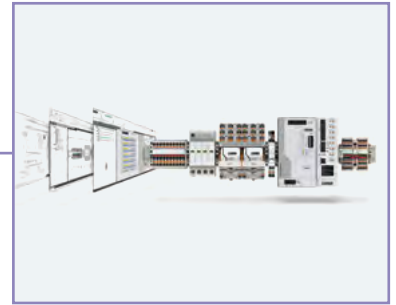
Time is money. The tools and resources used to build your control cabinet are key to controlling costs. Design software, marking systems, industrial tools, and value-add solutions are often overlooked. Careful consideration of these products reduces errors and production time, translating directly to the bottom-line profitability of any shop floor.

## SHOP FLOOR PRODUCTIVITY

- Design software
- ID solutions
- Industrial tools
- Value-add solutions

## Contents

Design software	4
Planning	6
Marking	8
ID solutions	10
Industrial printers	12
Markers and labels	14
Industrial tools	20
Hand tools	22
Semi-automatic wire processing machines	24
Connectors	26
Value Add Solutions	36
Efficient wire preparation and wiring	30
Wire duct and DIN rail	32
Limited Lifetime Warranty	38



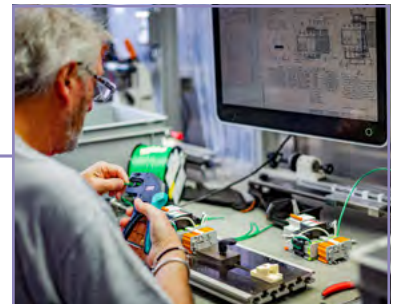
Design software



ID solutions



Industrial tools



Value Add Solutions



clipx WIRE assist

# Design software

Increasing productivity begins with a good cabinet design. Phoenix Contact's DIN rail assembly and marking design software suite is a free, easy-to-use tool to get you started. Design a DIN rail assembly, add accessories, and run auto-correction to ensure you have a precise layout. Then use the marking software to design and print on any of our labeling materials.



Download, register, and find helpful videos at:  
[www.phoenixcontact.com/project-complete](http://www.phoenixcontact.com/project-complete)

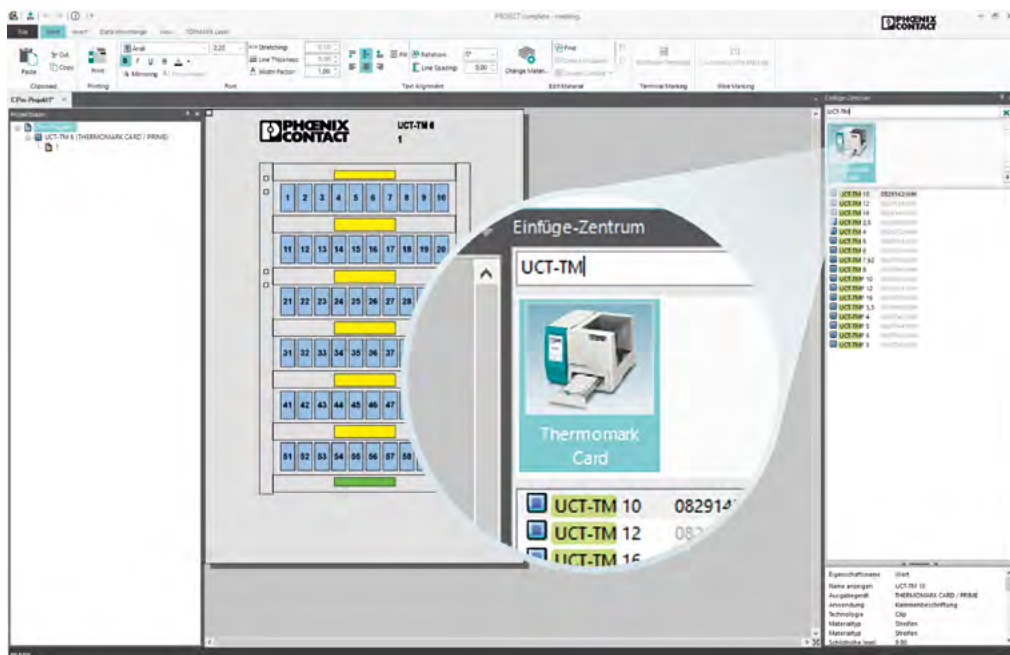
## PROJECT complete planning

PROJECT complete planning is an intuitive design software that makes it easier than ever to configure DIN rail assemblies for your control cabinet. Choose your components from a large library including all necessary accessories, run the auto-correct, then print or save all documentation.



## PROJECT complete marking

PROJECT complete marking makes it easy to generate all of your marking projects for any Phoenix Contact printer. Powerful features guide you through the creation of markers and labels for terminal blocks, wires and cables, as well as other components both inside and outside of the cabinet.

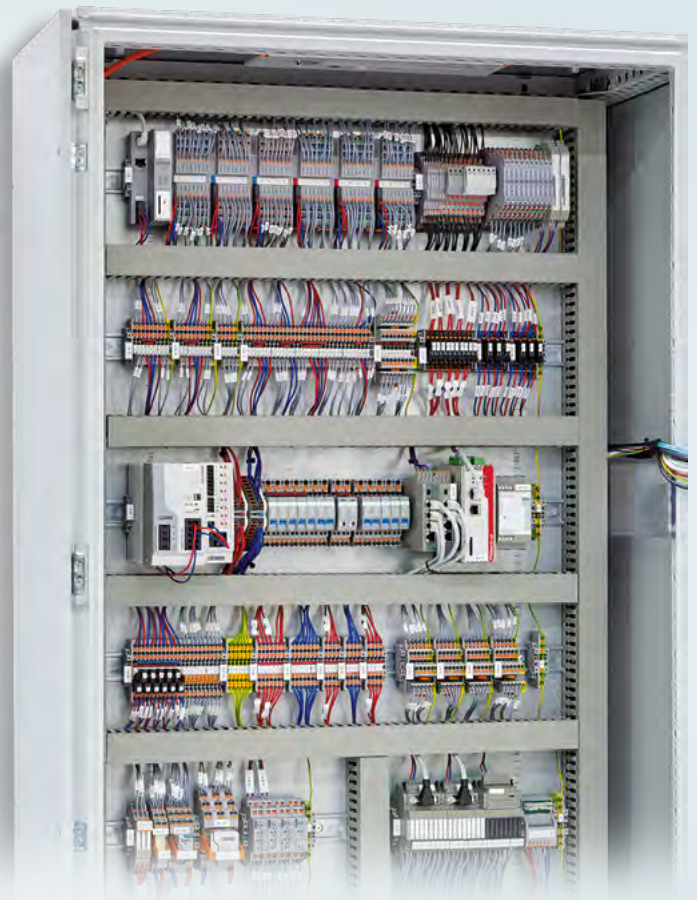
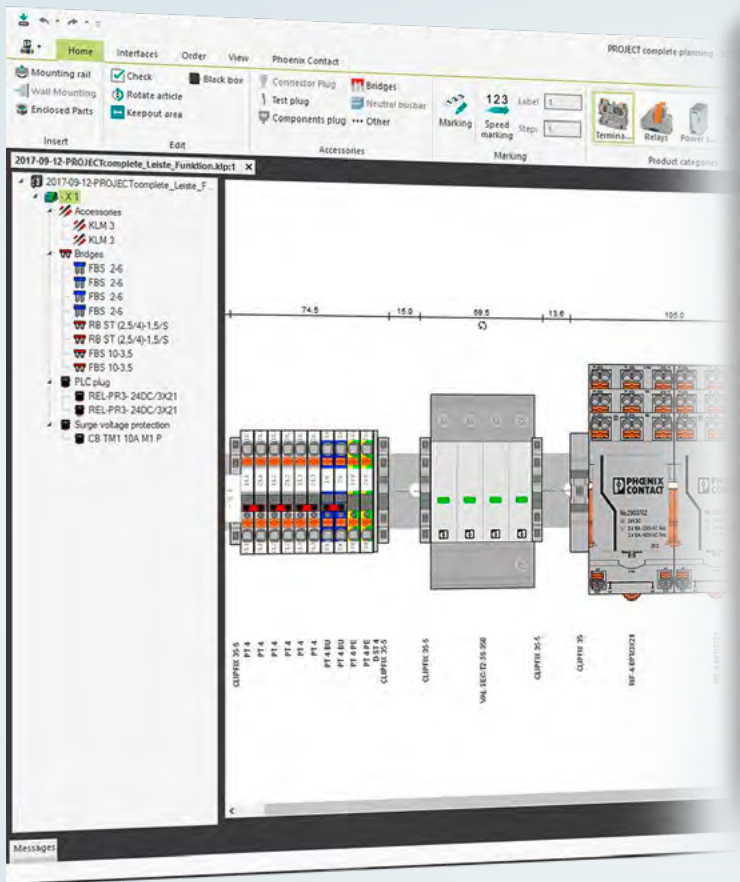


# Design software

## Planning

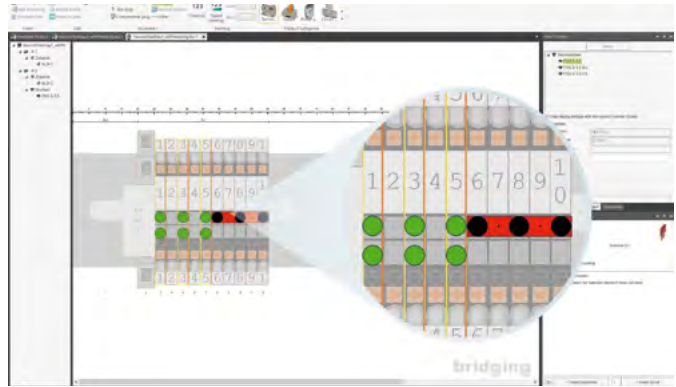
PROJECT complete planning is an intuitive design software that makes it easier than ever to configure DIN rail assemblies for your control cabinet. Choose components from a large database including necessary accessories, run the auto-correct, then print or save all documentation.

- User-friendly navigation
- Time-saving helpful features
- Accessories for all Phoenix Contact components
- Import and export capabilities



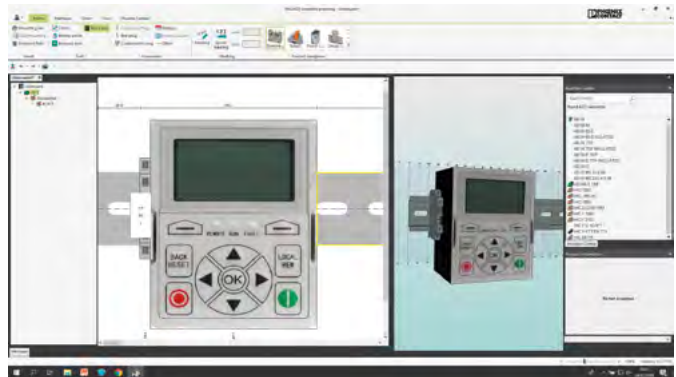
## User-friendly navigation

- ✓ “Drag and drop” components to build your rail two-dimensionally
- ✓ Use easily identifiable icons to complete tasks such as marking and bridging
- ✓ Common Windows shortcuts apply (copy, paste, undo)



## Features

- ✓ Take advantage of Phoenix Contact’s library of thousands of components to build your DIN rail assembly
- ✓ Easily add images and part numbers for third-party components
- ✓ 3D viewer
- ✓ Simple automatic correction with the click of a button
- ✓ Website hyperlinks provide access to product data sheets
- ✓ Free online updates ensure your library is up to date



## Accessories

- ✓ Markers
- ✓ Bridges
- ✓ End covers
- ✓ Test points



## Import/export capability

- ✓ Import from ePlan
- ✓ Export to PROJECT complete marking software
- ✓ Export .dwg and .dxf file formats
- ✓ Export or print project documents such as part lists and pictures



## Design software

# Marking

PROJECT complete marking makes it easy to generate all of your marking projects for **any** Phoenix Contact printer. Powerful features guide you through the creation of markers and labels for terminal blocks, wires, cables, and other components both inside and outside of the cabinet.

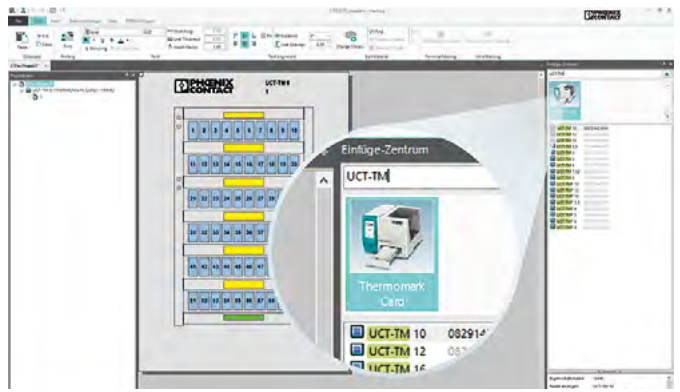
- User-friendly navigation is helpful for new users
- Special features for added details
- Customized templates save on the costs of buying pre-made labels
- Data import improves productivity and reduces typing errors





## User-friendly navigation

- ✓ “Drag and drop” functionality allows you to easily organize your project
- ✓ Use easily identifiable icons to complete tasks such as changing fonts and adding symbols
- ✓ Common Windows shortcuts apply (copy, paste, undo)



## Special features

- ✓ Large library features common industrial and electrical symbols
- ✓ Add your own graphics, such as company logos
- ✓ Create standard barcodes and QR codes
- ✓ Use the favorites list to quickly select your most-used materials



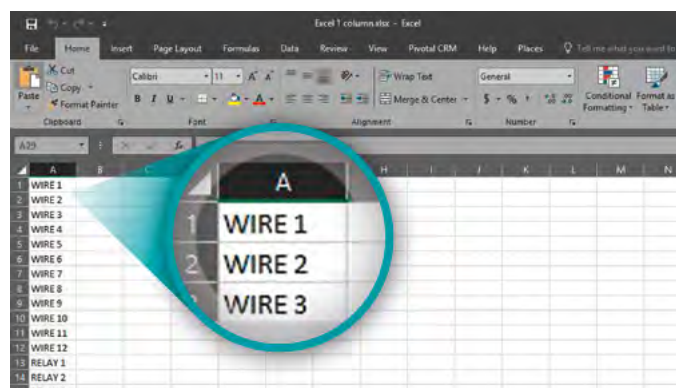
## Customized templates

- ✓ Design company labels complete with graphic logo
- ✓ We will also design templates for you at no charge  
[www.phoenixcontact.com/us-labeltemplates](http://www.phoenixcontact.com/us-labeltemplates)



## Data import

- ✓ Save time by importing data from other sources
- ✓ Bring marking data in from PROJECT complete for planning rail assemblies



## ID solutions

When it comes to printing, we offer a full line of desktop and portable printers for high- or low-volume projects. Our product line includes laser, ultraviolet, and thermal transfer technology printers. With a wide array of markers and labels for wires and components both inside and outside of the cabinet, we have all your printing needs covered.

Phoenix Contact constantly monitors the demands of the industry to provide the latest and most innovative printing and identification solutions.



## Industrial printers

Reliable industrial printers are a valuable element in the identification process. Our printers are robust in design and function to serve a variety of applications in industrial environments. We pride ourselves in our wide selection of printers that stand out on the manufacturing floor as valuable resources for identifying and streamlining manufacturing processes. Further automate your wire labeling process using our E SERIES applicators that apply the label directly to the wire with no handling necessary.



## Markers and labels

Our markers and labels are available in a variety of types, sizes, and colors for terminal blocks, wires, devices, and more. All materials have been fully tested with our inks and printers to pass standard mechanical, environmental, and material tests.



## ID solutions

# Industrial printers

Choosing the right printer is dependent upon several factors, including what is being marked, the volume of markers or labels needed, printer technology, and any workspace requirements. Phoenix Contact organizes printer types as follows:

- Card – For printing on rigid plastic cards, sheets, and metal plates
- Roll – For printing on “softer” labels that come on a roll (such as shrink sleeves)
- Portable – Printers that do not require a separate PC or power source

Some other considerations for choosing the right printer include the types of markers or labels being used (for example, snap-in terminal block markers or adhesive cabinet marking) and the overall quantity of marking your job requires. For large jobs (around 50K markers or more), consider a larger printer with automated capabilities to really boost productivity.

Next, choose a printer technology with the absolute permanency of UV ink or the lower maintenance of thermal transfer. Finally, take a look at your workspace. Are you on the shop floor with a dedicated printing area? Or is your application in the field without easy access to power? No matter the answers to the questions above, Phoenix Contact has options.



## Card printers

### BLUEMARK ID and ID COLOR

- ✓ UV ink technology for permanent results
- ✓ Automatic card feed for high-volume print jobs
- ✓ BLUEMARK COLOR has CMYK ink with up to 600 dpi resolution
- ✓ Print on aluminum plates for cables and cabinet
- ✓ Integrated color HMI with status details and resource videos

### THERMOMARK CARD 2.0

- ✓ Proven thermal transfer technology with low maintenance
- ✓ Fast! A card prints in less than 8 seconds
- ✓ Compact size works well for workshop benches
- ✓ Manual feed



## Roll printers

### THERMOMARK ROLL 2.0

- ✓ Compact size for smaller benchtop areas
- ✓ Reinforced plastic components keep overall cost low
- ✓ Color touchscreen with built-in help videos

### THERMOMARK E.300/E.600

- ✓ Durable metal construction designed for high-volume projects
- ✓ Larger size accommodates bulk rolls of labels
- ✓ Color touchscreen with built-in help videos

### Applicators

- ✓ E.SLEEVE
- ✓ E.WRAP
- ✓ E.WIRE



## Portable printers

### THERMOMARK PRIME

- ✓ For cards and sheets (same as TM Card 2.0)
- ✓ Integrated color HMI with software to design markers without a PC
- ✓ Simply drop in the fully contained ink ribbon

### THERMOMARK GO

- ✓ Easy operation using a smart device and our marking app
- ✓ Fully contained cartridge for die-cut and continuous labels with no separate ink ribbon

### THERMOMARK GO.K

- ✓ Easily enter data using the key pad
- ✓ Fully contained cartridge with combined label and ink ribbon for continuous labels and wire markers



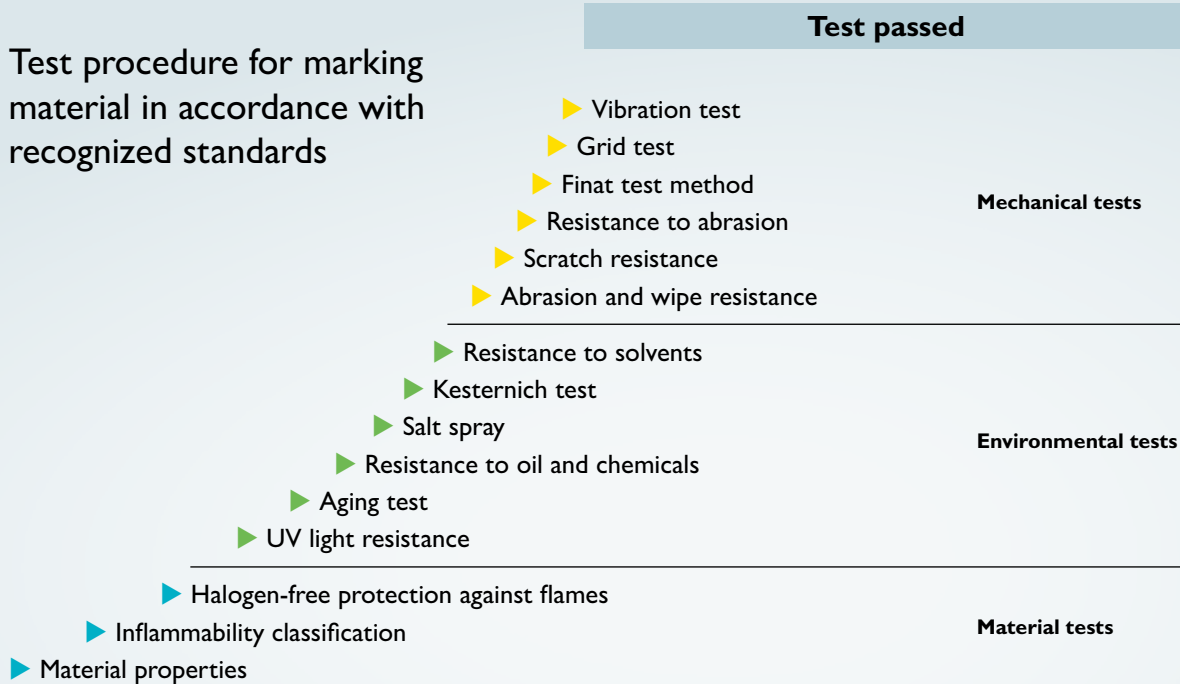
## ID solutions

# Markers and labels

Our markers and labels are available in a variety of types, sizes, and colors. All materials have been fully tested with our inks and printers to pass standard mechanical, environmental, and material tests.

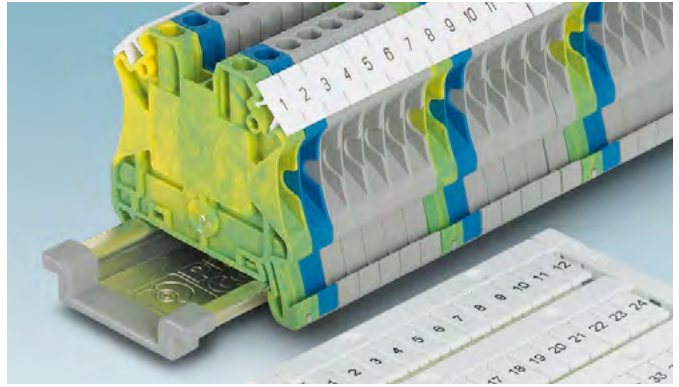
- Terminal blocks
- Wire and cables
- Components
- Solutions for both inside and outside of the cabinet

Test procedure for marking material in accordance with recognized standards



## Terminal block marking

- ✓ Traditional snap-in markers or adhesive labeling
- ✓ Multiple colors for easy visual identification
- ✓ Markers for other manufacturer's terminal blocks



## Wire/cable labeling

- ✓ Shrink sleeves in configured and continuous formats
- ✓ Adhesive, self-laminating wire wraps
- ✓ Cable tags for use with wire ties



## Components

- ✓ Push buttons
- ✓ End brackets
- ✓ Printed circuit boards



## Cabinet

- ✓ General ID labeling
- ✓ Warning labels
- ✓ Metal name plates



# ID solutions

Common products for printers, markers, and labels				
How to select a printer:				
A. What materials are you marking? (i.e., "card" or "roll" material)				
B. How many labels do you need to print? (Volume)				
C. Do you need a desktop or portable printer? (Size)				
D. Resulting Phoenix Contact part number				
A. Material	B. Volume	C. Size	D. Order #	Description
Card and sheet	Low volume with manual feed	Desktop	1095267	THERMOMARK CARD 2.0
Card and sheet	Low volume with manual feed	Portable	5148888	THERMOMARK PRIME
Card and sheet	High volume with auto feed	Large/desktop	1003334	BLUEMARK ID
Card and sheet	High volume with auto feed	Large/desktop	1002329	BLUEMARK ID COLOR
Roll	<50,000 labels/year	Desktop	1085267	THERMOMARK ROLL 2.0
Roll	>50,000 labels/year	Large/desktop	1287021	THERMOMARK E.300
Cartridge	Low	Handheld	1184146	THERMOMARK GO.K
Cartridge	Low	Handheld	1184148	THERMOMARK GO.K SET
Cartridge	Low	Portable	1090747	THERMOMARK GO
Cartridge	Low	Portable	1221548	THERMOMARK GO SET

Card printers: Terminal block markers					
A. Which card printer will you be using?			C. What is the width of the terminal block?		
B. Who is the terminal block manufacturer?			D. Resulting Phoenix Contact part number and description		
A. Printer	B. TB manufacturer	C. TB width (mm)	No. markers/card	D. Part no.	Description
Any Card	PxC	3.5	102	0829484	UCT-TM 3,5
Any Card	PxC	4.2	84	0828732	UCT-TM 4
Any Card	PxC	5.2	72	0828734	UCT-TM 5
Any Card	PxC	6.2	60	0828736	UCT-TM 6
Any Card	PxC	8.2	42	0828740	UCT-TM 8
Any Card	PxC	10.2	36	0829142	UCT-TM 10
Any Card	PxC	3.5	108	0829486	UCT-TMF 3,5
Any Card	PxC	4.2	90	0828742	UCT-TMF 4
Any Card	PxC	5.2	72	0828744	UCT-TMF 5
Any Card	PxC	6.2	60	0828746	UCT-TMF 6
Any Card	PxC	8.2	42	0828748	UCT-TMF 8
Any Card	Weid/AB	5.2	72	0829482	UCT1-TM 5
Any Card	Weid/AB	6.2	60	0829483	UCT1-TM 6
Any Card	Weid/AB	6.2	72	0829237	UCT1-TMF 5
Any Card	Weid/AB	6.2	60	0829243	UCT1-TMF 6
Any Card	Wago	4.5	72	0829249	UCT2-TM 5/6
BLUEMARK	PxC	5.2	96	0818108	UC-TM 5
BLUEMARK	PxC	6.2	80	0818085	UC-TM 6
BLUEMARK	PxC	8.2	56	0818072	UC-TM 8
BLUEMARK	PxC	10.2	48	0818069	UC-TM 10
BLUEMARK	PxC	5.2	96	0818153	UC-TMF 5
BLUEMARK	PxC	6.2	80	0818140	UC-TMF 6
BLUEMARK	PxC	8.2	56	0818137	UC-TMF 8

Available in other sizes and colors

Card printers: Cable markers (Use with wire ties*)					
A. Which card printer will you be using?			C. What size label do you need?		
B. What type of material is desired?			D. Resulting Phoenix Contact part number and description		
A. Printer	B. Material	C. Lettering field size (mm/in)	No. markers/card	D. Part no.	Description
BLUEMARK	Polyamide card	24 x 5 / 1 x 0.2	12	0820426	UC-WMTBA (24X5)
BLUEMARK	Polyamide card	29 x 8 / 1.1 x 0.3	12	0820183	UC-WMTBA (29X8)
BLUEMARK	Polyamide card	60 x 11 / 2.4 x 0.43	4	0820468	UC-WMTBA (60X11)
Any Card	Polycarbonate card	29 x 6 / 1.1 x 0.24	12	1014084	UCT-WMTBA (29X6)
Any Card	Polyester sheet	44 x 15 / 1.7 x 0.6	12	0828773	US-WMTB (44X15)
BLUEMARK	Aluminum plate	29 x 8 / 1.1 x 0.3	N/A	0830805	WMTB-AL (29X8)
BLUEMARK	Aluminum plate	60 x 15 / 2.4 x 0.6	N/A	0830525	WMTB-AL (60X15)
BLUEMARK	Aluminum plate	Dia: 30 / 1.2	N/A	0830804	WMTB-AL (D30)

Available in other sizes and colors

\*See page 41 for selection of wire ties



**Card printers: Component and cabinet labels for general identification**

<b>A. Which card printer will you be using?</b>	<b>D. What size label do you need?</b>
<b>B. What type of label is needed? (Adhesive, raised, flat, screw-mount)</b>	<b>E. Resulting Phoenix Contact part number and description</b>
<b>C. What material base is desired?</b>	

A. Printer	B. Type	C. Material	D. Lettering field size (mm/in)	No. markers/card	E. Part no.	Description
Any Card	Flat adhesive	Polyester sheet	20 x 8 / 0.79 x 0.3	64	0800458	US-EML (20X8)
Any Card	Flat adhesive	Polyester sheet	104 x 140 / 4.1 x 5.5	1	0800465	US-EML (104X140)
BLUEMARK	Raised adhesive	Polyamide card	27 x 12.5 / 1 x 0.5	8	0825469	UC-EMLP (27X12,5)
BLUEMARK	Raised adhesive	Polyamide card	60 x 15 / 2.36 x 0.6	4	0819330	UC-EMLP (60X15)
BLUEMARK	Raised adhesive	Polyamide card	60 x 30 / 2.36 x 1.2	3	0819343	UC-EMLP (60X30)
Any Card	Raised adhesive	Polyester sheet	20 x 9 / 0.79 x 0.35	75	0828795	US-EMLP (20X9)
Any Card	Raised adhesive	Polyester sheet	27 x 12.5 / 1 x 0.5	30	0828798	US-EMLP (27X12,5)
Any Card	Raised adhesive	Polyester sheet	27 x 15 / 1 x 0.6	27	0828799	US-EMLP (27X15)
Any Card	Raised adhesive	Polyester sheet	49 x 15 / 1.9 x 0.6	18	0828803	US-EMLP (49X15)
Any Card	Raised adhesive	Polyester sheet	60 x 30 / 2.36 x 1.2	4	0828805	US-EMLP (60X30)
Any Card	Raised adhesive	Polyester sheet	85.6 x 54 / 3.37 x 2.1	2	0828806	US-EMLP (85,6X54)
Any Card	Raised adhesive	Polyester sheet	104 x 135 / 4.1 x 5.3	1	0830304	US-EMLP (104X135)
Any Card	Screw-mount	Polyester sheet	75.6 x 54 / 3 x 2.1	2	0828930	US-EMSP (75,6X54) SR
Any Card	Screw-mount	Polyester sheet	90 x 60 / 3.5 / 2.36	2	0828932	US-EMSP (90X60) SR
BLUEMARK	Metal adhesive	Aluminum plate	60 x 30 / 2.36 x 1.2	N/A	0830513	EMLP-AL (60X30)
BLUEMARK	Metal adhesive	Aluminum plate	85.6 x 54 / 3.37 x 2.1	N/A	0830514	EMLP-AL (85,6X54)
BLUEMARK	Metal adhesive	Aluminum plate	100 x 60 / 4 x 2.36	N/A	0830515	EMLP-AL (100X60)
BLUEMARK	Metal screw-mount	Aluminum plate	75.6 x 54 / 3 x 2.1	N/A	0830503	EMSP-AL (75,6X54)

Available in other sizes and colors

**Roll printers: Component and cabinet labels for general identification**

<b>A. What is the application? (Type of label)</b>	<b>C. How many labels per roll is desired?</b>
<b>B. What size label do you need?</b>	<b>D. Resulting Phoenix Contact part number and description</b>

A. Type	B. Lettering field size (mm/in)	C. Markers/roll	D. Part no.	Description
Flat adhesive	20 x 8 / 0.79 x 0.3	2500	0816786	EML (20X8)R
Flat adhesive	25.4 x 12.7 / 1 x 0.5	2500	0816825	EML (25,4X12,7)R
Flat adhesive	51 x 25 / 2 x 1	1000	0817028	EML (51X25)R
Flat adhesive	50.8 x 25.4 / 2 x 1	3000	0816184	EML (50,8X25,4)RL
Flat adhesive	70 x 50 / 2.75 x 2	400	0817099	EML (70X50)R
Flat adhesive	100 x 73 / 4 x 3	300	0817125	EML (100X73)R
Raised adhesive	20 x 8 / 0.79 x 0.3	500	0819482	EMLP (20X8)R
Raised adhesive	22 x 12 / 0.87 x 0.47	500	0819495	EMLP (22X12)R
Raised adhesive	27 x 12.5 / 1 x 0.5	500	0804488	EMLP (27X12,5)R
Raised adhesive	60 x 30 / 2.36 x 1.2	250	0819505	EMLP (60X30)R
Push-button: 22mm hole	30 x 12 / 1.2 x 0.47	500	0819550	EMLP 24 (30X12)R
Push-button: 30mm hole	45 x 10 / 1.77 x 0.4	500	0801855	EMLP 30 (45X10)R
Warning w/ triangle	50 x 50 / 1 x 1	500	0830430	PML-W100 (50X50)R
Warning w/ triangle	100 x 100 / 4 x 4	250	0830431	PML-W100 (100X100)R
Warning w/ "Danger"	100 x 48 / 4 x 1.9	100	1016507	PML-W501 (100X48)R WH-RD
Warning w/ "Danger"	100 x 65 / 4 x 2.6	100	1016508	PML-W501 (100X65)R WH-RD

Available in other sizes, quantities, and colors

# ID solutions

Roll printers: Wire and cable labels					
A. What type of wire markers do you use? (i.e., shrink sleeves, self-laminating strips)		C. What size marking area do you need?			
B. What size wires are you marking?		D. How many markers or labels per roll is desired?			
		E. Resulting Phoenix Contact part number and description			
A.	B.	C.	D.	E.	
Type	Conductor size	Lettering field size (mm/in)	Markers/roll	Part no.	Description
Shrink sleeve	1 - 3.2 mm or 18 - 22 AWG	15 x 5 / 0.59 x 0.20	1000	0800380	WMS 3,2 (15X5)R
			4000	0800390	WMS 3,2 (15X5)RL
		30 x 5 / 1.18 x 0.20	500	0800374	WMS 3,2 (30X5)R
			2000	0800387	WMS 3,2 (30X5)RL
			5000	0804268	WMS 3,2 (30X5)RXL
			250	0800364	WMS 3,2 (60X5)R
	1.6 - 4.8 mm or 12 - 18 AWG	15 x 9 / 0.59 x 0.35	1000	0800384	WMS 3,2 (60X5)RL
			1000	0800382	WMS 4,8 (15X9)R
			4000	0800391	WMS 4,8 (15X9)RL
		30 x 9 / 1.18 x 0.35	10000	0800397	WMS 4,8 (15X9)RXL
			500	0800375	WMS 4,8 (30X9)R
			2000	0800388	WMS 4,8 (30X9)RL
	2.4 - 6.4 mm or 10 - 16 AWG	60 x 9 / 2.36 x 0.35	5000	0800395	WMS 4,8 (30X9)RXL
			250	0800366	WMS 4,8 (60X9)R
			1000	0800385	WMS 4,8 (60X9)RL
		15 x 10 / 0.59 x 0.39	2500	0800393	WMS 4,8 (60X9)RXL
			1000	0801593	WMS 6,4 (15X10)R
			4000	0801594	WMS 6,4 (15X10)RL
	3.5 - 9.5 mm or 8 - 14 AWG	30 x 10 / 1.18 x 0.39	10000	0801595	WMS 6,4 (15X10)RXL
			500	0800376	WMS 6,4 (30X10)R
			250	0800367	WMS 6,4 (60X10)R
		60 x 10 / 2.36 x 0.39	500	0800377	WMS 9,5 (30X16)R
			2000	0804267	WMS 9,5 (30X16)RL
			250	0800368	WMS 9,5 (60X16)R
Self-laminating wraps	< 3 mm Ø or < 16 AWG	13 x 10 / 0.51 x 0.39	5000	0800073	WML 3 (13X10)R
			3000	0817523	WML 5 (25X10)R
		< 5 mm Ø or < 12 AWG	25 x 10 / 0.98 x 0.39	7000	0816252
	< 6 mm Ø or < 12 AWG	13 x 13 / 0.51 x 0.51	4000	0800074	WML 7,5 (13X13)R
	< 7.5 mm Ø or < 10 AWG	17 x 9 / 0.67 x 0.35	1500	0828444	WML 7,5 (17X9)R
			2100	0800075	WML 7,5 (25X13)R
	< 12 mm Ø or < 2 AWG	25 x 13 / 0.98 x 0.51	1000	0800076	WML 12 (25X19)R
	< 14 mm Ø or < 2 AWG	25 x 19 / 0.98 x 0.75	1500	0817536	WML 14 (25X19)R
			1000	0817552	WML 14 (38X19)R
	< 18 mm Ø or < 3/0 AWG	38 x 19 / 1.5 x 0.75	2500	0817507	WML 18 (12X12)R
	< 20 mm Ø or < 4/0 AWG	12 x 12 / 0.47 x 0.47	500	0828457	WML 20 (31X25)R
	< 22 mm Ø	31 x 25 / 1.22 x 0.98	900	0800078	WML 22 (25X25)R
	< 36 mm Ø	25 x 25 / 0.98 x 0.98	500	0817510	WML 36 (25X38)R
	< 46 mm Ø	25 x 38 / 0.98 x 1.5	250	0800067	WML 46 (25X38)R
	Cable markers for use with wire ties	Any	40 x 12 / 1.57 x 0.47	1000	0830407
Any		55 x 25 / 2.2 x 1.0	500	0830411	WMTB HF (55X25)R
Any		24 x 8 / 1.0 x 0.3	4000	0816278	WMTB (24X8)R
Any		35 x 15 / 1.38 x 0.6	1700	0817316	WMTB (35X15)R

**Portable printer cartridges: Wire and cable labels**

<b>A. What type of wire markers do you use? (i.e., shrink sleeves, self-laminating strips)</b>	<b>C. What size wires are you marking?</b>
<b>B. Which portable printer are you using?</b>	<b>D. What size marking area do you need?</b>
<b>E. Resulting Phoenix Contact part number and description</b>	

A. Type	B. Printer	C. Conductor size	D. Lettering field size [mm(in)]	No. of markers	E. Part no.	Description
Shrink sleeves	THERMOMARK GO and GO.K	1 - 3.2 mm or 18 - 22 AWG	E x 5 mm (0.2 in)	Continuous	0803923	MM-WMS 3,2 (EX5)R C1 WH/BK
		1.6 - 4.8 mm or 12 - 18 AWG	E x 9 mm (0.35 in)	Continuous	0803924	MM-WMS 4,8 (EX9)R C1 WH/BK
		2.4 - 6.4 mm or 10 - 16 AWG	E x 10 mm (0.39 in)	Continuous	0803925	MM-WMS 6,4 (EX10)R C1 WH/BK
		3.5 - 9.5 mm or 8 - 14 AWG	E x 16 mm (0.63 in)	Continuous	0803926	MM-WMS 9,5 (EX16)R C1 WH/BK
Self-laminating wraps	THERMOMARK GO and GO.K	< 3 mm Ø or < 16 AWG	E x 10 mm (0.39 in)	Continuous	0803931	MM-WML 3 (EX10)R C1 WH/BK
		< 5 mm Ø or < 12 AWG	E x 10 mm (0.39 in)	Continuous	0803932	MM-WML 5 (EX10)R C1 WH/BK
	THERMOMARK GO ONLY	< 5 mm Ø or < 12 AWG	24 x 10 / 0.98 x 0.39	235	1116196	MM-WML 5 (24X10)R C1 WH/BK
		< 6 mm Ø or < 12 AWG	13 x 13 / 0.51 x 0.51	190	1116197	MM-WML 6 (13X13)R C1 WH/BK
		< 7.5 mm Ø or < 10 AWG	24 x 13 / 0.98 x 0.51	165	1116198	MM-WML 7,5 (24X13)R C1 WH/BK
		< 14 mm Ø or < 2 AWG	24 x 19 / 0.98 x 0.75	93	1116146	MM-WML 14 (24X19)R C1 WH/BK
Adhesive cloth wraps	THERMOMARK GO and GO.K	Any	E x 10 mm (0.39 in)	Continuous	0803933	MM-EMLC (EX10)R C1 WH/BK
			E x 12 mm (0.47 in)	Continuous	0803934	MM-EMLC (EX12)R C1 WH/BK
			E x 14 mm (0.55 in)	Continuous	1116134	MM-EMLC (EX14)R C1 WH/BK
			E x 18 mm (0.71 in)	Continuous	0803936	MM-EMLC (EX18)R C1 WH/BK

**Portable printer cartridges: General identification adhesive labels**

<b>A. Which portable printer are you using?</b>	<b>C. What size label is needed?</b>
<b>B. What is the application? (Inside or outside of the cabinet)</b>	<b>D. Resulting Phoenix Contact part number and description</b>

A. Printer	B. Application	C. Lettering field size [mm(in)]	No. of markers	D. Part no.	Description
THERMOMARK GO and GO.K	Indoor	E x 10 mm (0.39 in)	Continuous	0803970	MM-EML (EX10)R C1 WH/BK
		E x 12 mm (0.47 in)	Continuous	0803971	MM-EML (EX12)R C1 WH/BK
		E x 14 mm (0.55 in)	Continuous	1116982	MM-EML (EX14)R C1 WH/BK
		E x 18 mm (0.71 in)	Continuous	0803972	MM-EML (EX18)R C1 WH/BK
		E x 24 mm (1.0 in)	Continuous	0803973	MM-EML (EX24)R C1 WH/BK
THERMOMARK GO ONLY	Indoor	16.5 x 5 / 0.65	335	1116200	MM-EML (16,5X5)R C1 WH/BK
		20 x 8 / 0.79 x 0.3	297	1116204	MM-EML (20X8)R C1 WH/BK
THERMOMARK GO and GO.K	Indoor/outdoor	E x 10 mm (0.39 in)	Continuous	0803937	MM-EMLF (EX10)R C1 WH/BK
		E x 12 mm (0.47 in)	Continuous	0803938	MM-EMLF (EX12)R C1 WH/BK
		E x 14 mm (0.55 in)	Continuous	1116135	MM-EMLF (EX14)R C1 WH/BK
		E x 18 mm (0.71 in)	Continuous	0803939	MM-EMLF (EX18)R C1 WH/BK
		E x 24 mm (1.0 in)	Continuous	0803940	MM-EMLF (EX24)R C1 WH/BK

Available in other sizes and colors

**Portable printer cartridges: Terminal block markers**

<b>A. Which portable printer are you using?</b>
<b>B. What type of marker is desired?</b>
<b>C. Resulting Phoenix Contact part number and description</b>

A. Printer	B. Type	Format	Width	Length	C. Part no.	Description
<b>Transparent adhesive labels overlay snap-in markers</b>						
THERMOMARK GO and GO.K	Adhesive label	Continuous	4.2 mm/0.165 in.	8 m/ 26.25 ft	0803979	MM-TML (EX4,2)R C1 TR/BK
			9.5 mm/0.374 in.	8 m/ 26.25 ft	0803981	MM-TML (EX9,5)R C1 TR/BK
<b>Slide-in marker strip into the marker channel</b>						
THERMOMARK GO and GO.K	Non-adhesive label	Continuous	6.35 mm/0.25 in.	2.5 m/ 8.2 ft	0803982	MM-TMT (EX6,35)R C1 WH/BK
			9.5 mm/0.374 in.	2.5 m/ 8.2 ft	0803983	MM-TMT (EX9,5)R C1 WH/BK

\* For THERMOMARK PRIME materials, see Card Printers

# Industrial tools

Phoenix Contact offers a variety of industrial tools to assist with all facets of control cabinet assembly. Cut, strip, and crimp using our TOOL fox family of hand and bench-top semi-automatic wire processing tools. These quality industrial and electrical hand tools are guaranteed to get the job done, no matter what the application. Or try the electric bench-style devices that reduce fatigue while increasing productivity and your bottom line.



## Hand tools

Cut, strip, and crimp using our TOOL fox family of hand tools. This series of quality industrial and electrical hand tools is guaranteed to get the job done, no matter what the application.



## Semi-automatic wire processing machines

Our comprehensive range of bench-mounted cut, strip, and crimp automatic machines will increase your wire processing productivity. The combination of functionality and quick die-changes guarantees connector adjustability with quality results. The devices allow easy relocation of work stations with basic setup and simple operation.



## Connectors

The use of ferrules, ring lugs, or other connectors is often required, such as for CE certification in Europe. Control cabinet and rail assembly engineers may specify the use of ferrules in their builds for their high quality, durability, and secure connections.



## Industrial tools

# Hand tools

Cut, strip and crimp using our TOOL fox family of hand tools. These quality industrial and electrical hand tools are guaranteed to get the job done, no matter what the application. They are also guaranteed for long use with a limited-lifetime warranty.

- CUTFOX/UNIFOX – Cutting tools and pliers
- WIREFOX – Wire stripping tools
- CRIMPFOX – Connector crimping tools
- SCREWFOX – Screwdrivers



## CUTFOX/UNIFOX

- ✓ Clean cuts without squeezing the cable
- ✓ Non-slip handles
- ✓ Special hardened steel
- ✓ Unique cutting-edge geometry
- ✓ Designed for optimal leverage
- ✓ VDE/1000V insulated handles



## WIREFOX

- ✓ Replaceable and interchangeable blades
- ✓ Unique blade geometry
- ✓ Integrated cutter
- ✓ Safe – no sharp exposed edges
- ✓ Tough and durable
- ✓ Easy to use
- ✓ Integrated strip length measure
- ✓ Self adjusting for a range of AWGs



## CRIMPFOX

- ✓ Guaranteed crimp connections
- ✓ Precision-made interchangeable dies
- ✓ Integrated forced-lock system
- ✓ Non-slip handles
- ✓ High pull-out force
- ✓ UL486F with Phoenix Contact ferrules



## SCREWFOX

- ✓ Torque screwdrivers
- ✓ Quick-release chuck for bits
- ✓ Torque is adjustable in small increments
- ✓ Manual TSDs calibrated for UL
- ✓ Battery-powered torque screwdriver



## Industrial tools

# Semi-automatic wire processing machines

A comprehensive range of benchtop cut, strip, and crimp automatic machines will increase your wire processing productivity. The combination of functionality and quick die-change guarantees connector adjustability with high-quality results. These devices allow quick relocation of work stations with basic setup and easy operation.

- CUTFOX 10 – Automated wire cutting
- WF1000 – Wire stripping
- CF500 – Various connector crimping
- CF3000 and CF1000 – Wire stripping and ferrule crimping





## CUTFOX 10 – Automatic wire cutting machine

- ✓ 24-8 AWG stranded
- ✓ Self-adjusting cross-section
- ✓ Metric or English measurements
- ✓ Quantity counter
- ✓ Supported by Microsoft Excel for user-friendly data transfer



## WF1000 – Automatic wire stripping machine

- ✓ 28-10 AWG capacity
- ✓ Full strip lengths between 3-20 mm
- ✓ Partial strip lengths between 2-20 mm
- ✓ User-friendly operations
- ✓ Visible settings table provided on top of unit



## CF500 – Connector crimping machine

- ✓ High compression capacity
- ✓ Foot pedal activated
- ✓ Quantity counter
- ✓ Processes a variety of connectors up to 50 mm<sup>2</sup>



## CF3000 and CF1000 – Wire stripping and ferrule crimping machines

- ✓ Reeled or loose ferrules
- ✓ 22-12 AWG or 12, 10, and 8 AWG
- ✓ CF3000 produces 450 crimps per hour
- ✓ CF1000 produces 1200 crimps per hour
- ✓ CF1000 offers strip-only function

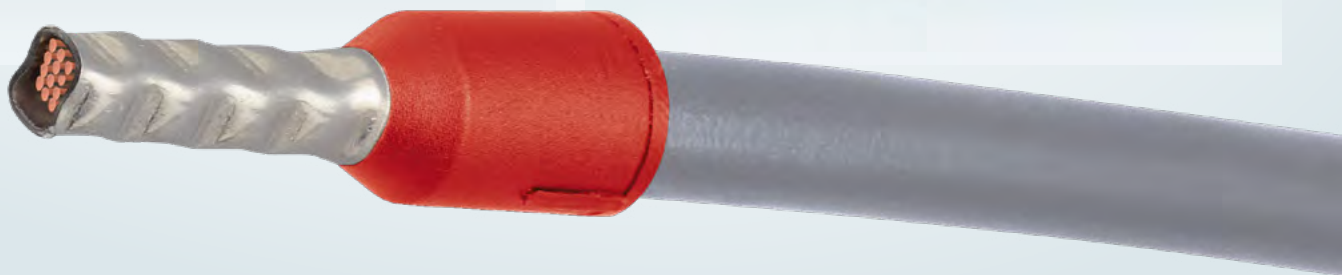
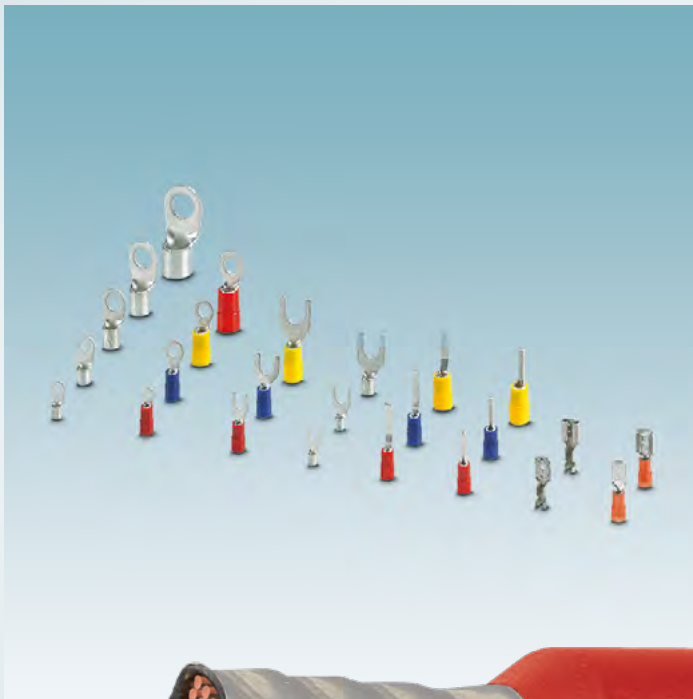


## Industrial tools

# Connectors

The use of ferrules, ring lugs, or other connectors is often required, such as for CE certification in Europe. Control cabinet and rail assembly engineers may specify the use of ferrules in their builds simply due to their high quality, durability, and secure connections.

- What are they?
- Types of connectors
- Why use them?
- UL approval



## What are they?

- ✓ Tin-plated copper tube
- ✓ Sizes 250 MCM to 28 AWG



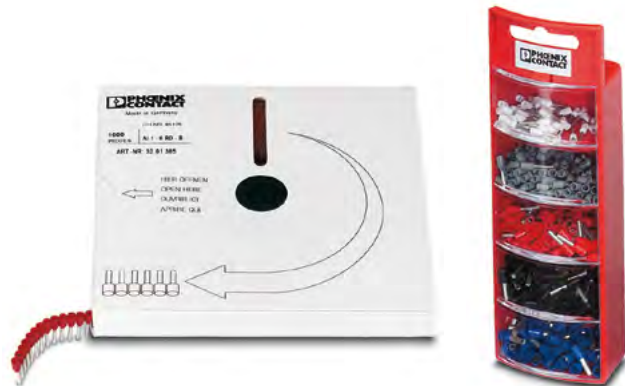
## Types of connectors

- ✓ Ferrules – single, twin, strips, reeled
- ✓ Lugs – ring and fork
- ✓ Turned contacts
- ✓ Slip-on sleeves



## Why use them?

- ✓ Solid connections
- ✓ Elimination of stray strands
- ✓ Long-term electrical performance
- ✓ Corrosion resistance
- ✓ Durability and safety of the connection
- ✓ Required in Europe for CE



## UL 486F approval

- ✓ UL file number E488001
- ✓ Insulated and non-insulated
- ✓ Includes most handheld crimpers
- ✓ Includes the CF3000, CF1000, and the CF500



# Industrial tools

Wire processing hand tools			
A. What do you need to do?			
B. What type of wire?			
C. What is the AWG of the wire?			
D. What type of connector are you using?			
A. Cable cutting		C. AWG	
1212128	CUTFOX 12	< 2	
1212129	CUTFOX 18	< 1/0	
1212130	CUTFOX 25	< 350 kcmil	
1212526	CUTFOX 50 STEEL	< 600 kcmil	
1212133	CUTFOX 52	< 600 kcmil	
1212135	CUTFOX 100		
A. Diagonal cutters			
1212207	CUTFOX-S VDE		
1212830	CUTFOX-S VDE M		
1212206	CUTFOX-SP VDE		
A. Electrician scissors		C. AWG	
1139725	CUTFOX-MPS		Kevlar fibers
1212621	CUTFOX-ES	16-10	Kevlar fibers
1139721	CUTFOX-ES-1	<8	
A. Special purpose cutters			
1205985	CUTFOX FB	Bridge cutter	
1212124	CUTFOX-FBS	Bridge teeth cutter	
1212474	CUTFOX-CD	Handheld wire duct cutter	
A. Pliers and wrenches			
1212204	UNIFOX-P VDE	Needle nose pliers	
1212205	UNIFOX-PC VDE	Angle head needle nose pliers	
1212365	UNIFOX-WP	Grooved wrench	
1212835	UNIFOX-WRENCH	Non-grooved wrench	
A. Bench top DIN rail and wire duct cutters			
1207569	PPS CD M	Wire duct cutter	
1207585	PPS BASIC I/M	DIN rail cutter	
1104980	PPS COMPACT	Portable DIN rail cutter	
A. Contact removal and assembly tools			
1072069	UNIFOX RT-CK 1.6		
1072067	UNIFOX RT-CK 2.5		
1072064	UNIFOX RT-CK 4.0		
1089092	UNIFOX MT-CK 1.6/2.5		
A. Connector crimping tools		D. Connector type	
C. AWG			
1687419	CRIMPFOX-1,6/2,5-ED-4,0	CK 1,6-2,5	24-12
1205859	CRIMPFOX-4,0-ED-6,00	CK 4,0 Contacts	12-10
1212111	CRIMPFOX-DSUB 5	D-SUB Contacts	28-22
1212721	CRIMPFOX 10	Ferrule	12-8
1212845	CRIMPFOX 16R TWIN	Ferrule/twin	10-6
1212719	CRIMPFOX 2,5-M	Ferrule	24-14
1212039	CRIMPFOX 25R	Ferrule	8-4
1200102	CRIMPFOX 4 IN 1 SET	Ferrule	24-14
1212041	CRIMPFOX 50R	Ferrule	2-1
1212034	CRIMPFOX 6	Ferrule	24-10
1212720	CRIMPFOX 6-M	Ferrule	24-10
1212043	CRIMPFOX 6S-F	Ferrule	20-10
1213156	CRIMPFOX CENTRUS 10H	Ferrule	24-8
1213154	CRIMPFOX CENTRUS 10S	Ferrule	24-8
1213146	CRIMPFOX CENTRUS 6H	Ferrule	24-10
1213144	CRIMPFOX CENTRUS 6S	Ferrule	24-10
1031721	CRIMPFOX DUO 10	Ferrule	24-8
1202877	CRIMPFOX DUO 16S	Ferrule	26-6
1134913	CRIMPFOX 10T-F	Ferrule/twin	24-8
1212055	CRIMPFOX-RCI 1	Insulated lugs	26-18
1212053	CRIMPFOX-RCI 2,5	Insulated lugs	
1212057	CRIMPFOX-RCI 6	Insulated lugs	20-10
1212730	CRIMPFOX-RCI 6-M	Insulated lugs	20-10
1212318	CRIMPFOX-C120	Multiple connectors	
1212093	CRIMPFOX-M SET	Multiple connectors	
1204038	CRIMPFOX MT 2,5	Snap-in contacts	20-12
1212066	CRIMPFOX-RCT 25-1	Tubular cable lugs	8-4
1314533	CRIMPFOX-TC HC 10	Turned contacts	AWG 10-8
1297083	CRIMPFOX-TC HC 4	Turned contacts	AWG 26-12
1212113	CRIMPFOX-TC 4	Turned contacts	22-12
1212510	CRIMPFOX-TC MP	Turned contacts	28-14
1212061	CRIMPFOX-RC 10	Uninsulated lugs	12-8
1212063	CRIMPFOX-RC 2,5	Uninsulated lugs	
1212065	CRIMPFOX-RC 25	Uninsulated lugs	8-4
1212710	CRIMPFOX-RC 6	Uninsulated lugs	
1212048	CRIMPFOX-SC 1,5	Uninsulated slip-on sleeves	26-16
1212050	CRIMPFOX-SC 6	Uninsulated slip-on sleeves	22-10
B. Wire type		C. AWG	
1212150	WIREFOX 10	Solid/stranded	34-8
1212161	WIREFOX-D 40	Multiconductor	
1212623	WIREFOX SAC	Sensor cable	12-10
1212158	WIREFOX 6SC	Solid/stranded	16-8
1212156	WIREFOX 4	Solid/stranded	28-12
1212157	WIREFOX 16-1	Sensor cable	10-6
1212368	WIREFOX 2,5	Solid/stranded	28-14
1212154	WIREFOX ASI	Flat-ribbon conductors	
1212155	WIREFOX 16	Solid/stranded	12-5
1212757	WIREFOX SAC-1	Sensor cable	12-10
1212619	WIREFOX FC	Flat-ribbon conductors	
A. Torque screwdrivers			
1200294	SF-ASD 16	Battery-powered (just screwdriver)	
1200295	SF-ASD 16 SET	Battery-powered (includes battery, charger, and case)	
1212224	TSD-M 1,2NM	0.3 -1.2 Nm	Manual
1212225	TSD-M 3NM	1.2 - 3.0 Nm	Manual
1212226	TSD-M 6NM	3.0 - 6.0 Nm	Manual
A. Torque screwdriver bit			
1212568	SF-BIT-SL 0,6X3,5-50		
Screwdriver bit set			
1212545	SF-BIT-SET		
Screwdriver bits			
1212566	SF-BIT-SL 0,5X3,0-50		
1212567	SF-BIT-SL 0,5X3,0-70		
1212568	SF-BIT-SL 0,6X3,5-50		
1212569	SF-BIT-SL 0,6X3,5-70		
1212571	SF-BIT-SL 0,8X4,0-50		
1212572	SF-BIT-SL 0,8X4,0-70		
1212574	SF-BIT-SL 1,0X5,5-50		
1212575	SF-BIT-SL 1,0X5,5-70		
1212577	SF-BIT-SL 1,2X6,5-70		
Phillips head bits			
1212579	SF-BIT-PH 1-50		
1212580	SF-BIT-PH 2-50		
1212581	SF-BIT-PH 3-50		
1212582	SF-BIT-PH 1-70		
1212583	SF-BIT-PH 2-70		
1212584	SF-BIT-PH 3-70		
HEX screwdriver bits			
1212645	SF-BIT-HEX 2-50		
1212646	SF-BIT-HEX 2,5-50		
1212647	SF-BIT-HEX 3-50		
1212648	SF-BIT-HEX 4-50		
1212649	SF-BIT-HEX 5-50		
1212650	SF-BIT-HEX 6-50		
1212651	SF-BIT-HEX 8-50		
A. Spin top flat head			
1205202	SZS 0,4x2,0		
A. Bladed screwdrivers			
	Insulated		Non-insulated
0,5x3,0	1207404	0,4x2,5	1212547
0,6x2,5	1205040	0,5x3,0	1212548
0,8x4,0	1212508	0,6x3,5	1212549
A. Phillips head screwdrivers			
PH 0	1212558		1205147
PH 1	1212559		1205150
PH 2	1212560		1205163
PH 3	1212561		1212536

Semi-automatic wire processing				
A. What do you need to do?				
B. What is the AWG of the wire?				
		A. Function	B. AWG	
CF 1000-1,5				
1208199	CF 1000-1,5	Loose ferrule crimper	22-14	
1208226	CF 1000-TOOLKIT 0,34/6-8	Conversion kit	22	
1208242	CF 1000-TOOLKIT 2,5/6-12	Conversion kit	14	
1208271	CF 1000-TOOLKIT 4,0/10	Conversion kit	12	
CF 1000-10				
1212456	CF 1000-10	Loose ferrule crimper	12-8	
1212458	CF 1000-10-TOOLKIT 4/10-12	Conversion kit	12	
1212459	CF 1000-10-TOOLKIT 6/12	Conversion kit	10	
1212460	CF 1000-10-TOOLKIT 10/12	Conversion kit	8	
CF 3000-2,5 120V				
1205516	CF 3000-2,5 120V	Reeled ferrule crimper	22-14	
1212376	CF 3000-TOOLKIT 0,25	Conversion kit	22	
1208351	CF 500-120V	Multiple connector crimper		
1206829	CUTFOX 10	Wire cutter	22-8	
1212258	WF 1000 120V	Wire stripper	28-10	
1203123	ZAP 25 T	Loose ferrule crimper	24-14	
1203262	ZAP 100 T	Loose ferrule crimper	12-8	
1212630	ZAP 40	Loose ferrule crimper	24-12	

Connectors			
A. What type of connector?			
B. What AWG is the wire?			
A. Insulated ferrules			
Loose ferrules			
Single			
Part #	Description	B	AWG
3200030	AI 1-8 RD	18	
3200043	AI 1,5-8 BK	16	
3200522	AI 2,5-8 BU	14	
Twin			
3200810	AI-TWIN 2x1-8 RD	18	
3200823	AI-TWIN 2x1,5-8 BK	16	
3200836	AI-TWIN 2x2,5-10 BU	14	
Reeled ferrules (For use with the CF3000)			
3201385	AI 1-8 RD-B	18	
3201398	AI 1,5-8 BK-B	16	
3201408	AI 2,5-8 BU-B	14	
A. Insulated ring lugs			
22	C-RCI 1,5/M3	20-16	
3240021	C-RCI 2,5/M3	16-14	
3240029	C-RCI 6/M6	#12-10	
A. Insulated fork lugs			
3240032	C-FCI 1,5/M3	20-16	
3240039	C-FCI 2,5/M4	16-14	
3240042	C-FCI 6/M4	#12-10	

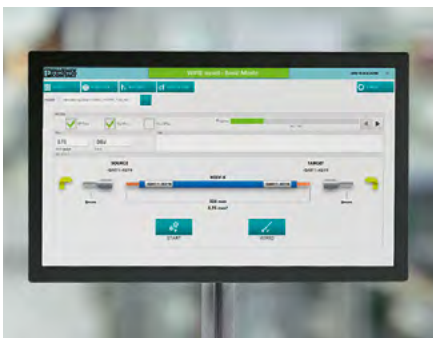
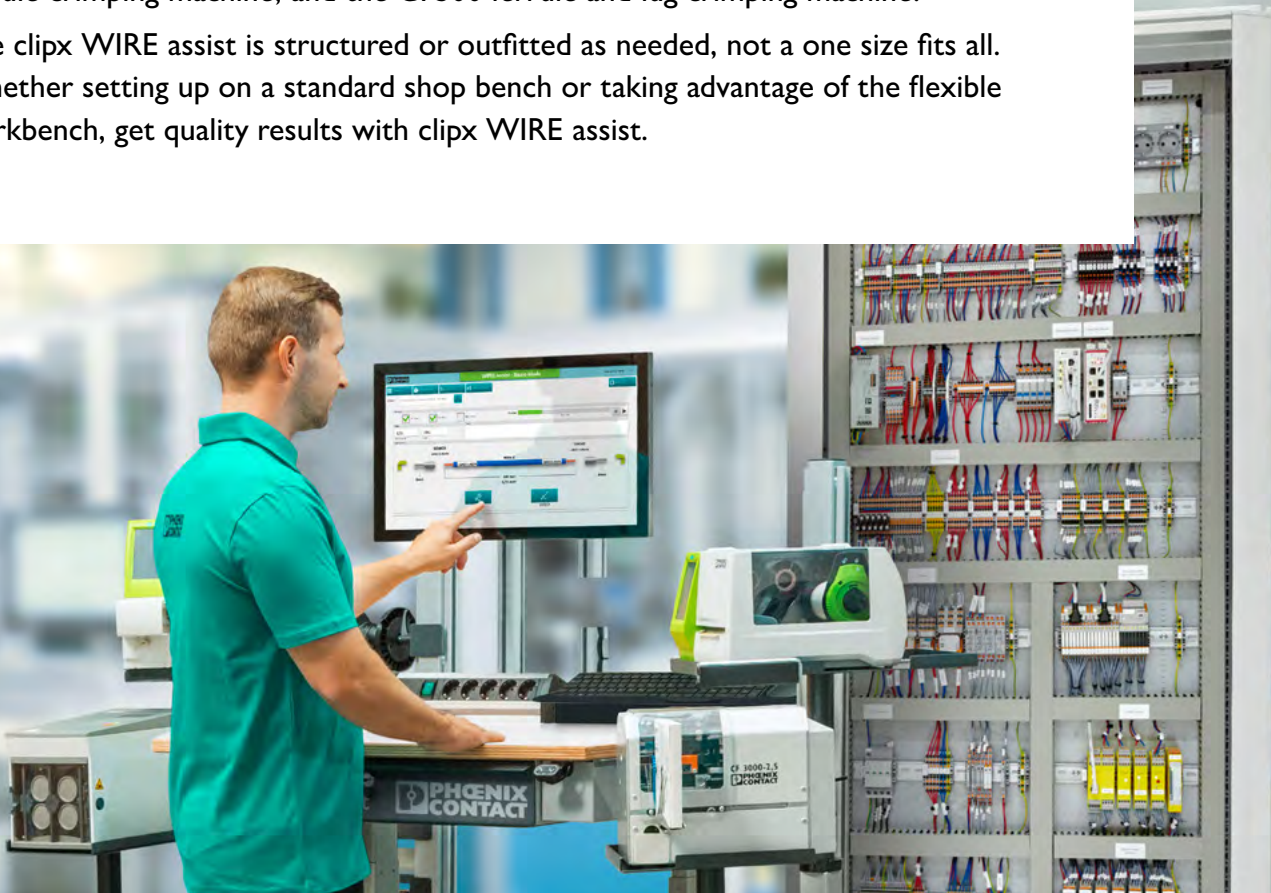
Newton meters-to-inch-pounds conversion chart			
Newton meters	Inch pounds	Newton meters	Inch pounds
0.2	1.77	5.0	44.25
0.3	2.65	5.5	48.67
0.4	3.54	6.0	23.10
0.5	4.42	6.5	57.52
0.6	5.31	7.0	61.95
0.7	6.19	7.5	66.38
0.8	7.08	8.0	70.80
0.9	7.96	8.5	75.23
1.0	8.85	9.0	79.65
1.2	10.62	9.5	84.08
1.3	11.50	10.0	88.50
1.4	12.39	10.5	92.93
1.5	13.27	11.0	97.35
1.6	14.16	11.5	101.78
1.7	15.04	12.0	106.20
1.8	15.93	12.5	110.63
1.9	16.81	13.0	115.05
2.0	17.7	13.5	119.48
2.1	19.47	14.0	123.91
2.2	20.35	14.5	128.33
2.4	21.24	15.0	132.76
2.4	22.12	15.5	137.18
2.5	23.01	16.0	141.61
2.6	23.89	16.5	146.03
2.7	24.78	17.0	150.46
2.8	25.66	17.5	154.88
2.9	26.55	18.0	159.31
3.0	28.32	18.5	163.73
3.2	28.32	19.0	168.16
3.3	29.20	19.5	173.58
3.4	30.09	20.0	177.01
3.5	30.97	25.0	221.26
4	35.40	30.0	265.52
4.5	39.82		

American Wire Gauge to metric conversion chart			
AWG/lcmil	Comparable conductor cross-section [mm <sup>2</sup> ]	AWG/kcmil	Comparable conductor cross-section [mm <sup>2</sup> ]
30	0.05	(9)	
(29)		8	8.4
28	0.08	(7)	10
(27)		6	
26	0.12	(5)	16
(25)	0.14	4	
24	0.22	(3)	25
(23)	0.25	2	35
22	0.32	1	
(21)		0	50
20	0.5	00	70
(19)	0.75	000	95
18	0.82	0000	120
(17)	1	250 kcmil	120
16	1.3	300 kcmil	150
(15)	1.5	350 kcmil	185
14	2.1	400 kcmil	
(13)	2.5	500 kcmil	240
12	3.3	600 kcmil	300
(11)	4		
10	6		

# Efficient wire preparation and wiring

The clipx WIRE assist is a worker assistance system that provides a software-aided “tool” for efficient wire preparation. It increases wire processing productivity with high quality, consistent results, from cutting and labeling to crimping ferrules or lugs. The software controls the wire cutting and labeling devices and guides the user through clear onscreen instructions. The program can be used with the Cutfox 10 wire cutting machine, the Thermomark series wire labeling printers, the CF3000 wire stripping and ferrule crimping machine, and the CF500 ferrule and lug crimping machine.

The clipx WIRE assist is structured or outfitted as needed, not a one size fits all. Whether setting up on a standard shop bench or taking advantage of the flexible workbench, get quality results with clipx WIRE assist.



The easy-to-follow software controls guide the user through the wire processing steps.



The height-adjustable workbench along with the easy positioning of the wire processing and marking devices allows for optimal ergonomic working conditions.



The workbench arranges the equipment within an arm's reach and offers a convenient drawer for storage of hand tools and supplies.

# Ergonomic and intuitive wire preparation



## Process reliability

The clipx WIRE assist software guides the user through wire preparation and reduces the potential for errors, increasing the reliability in wire preparation.



## Modularity

The modular design of the workbench provides flexibility in the design of the workplace and becomes a precisely tailored solution to your needs.



## Mobility

With its compact shape and steerable casters, the clipx WIRE assist workbench can be moved quickly and easily around the shop floor. This increases efficiency and reduces workstation preparation time.

## Customize setup

For further information on clipx WIRE assist, scan the QR code



The easy-to-follow display has all the necessary information for wire processing.

Change a wide range of wires quickly by stocking wires at the cutting machine.



Ensure efficient and consistent wire processing with proven automatic tools like the CF 3000 and the WF 1000, as well as the THERMOMARK printing series.

The position of the devices are adjustable to the comfort of the worker, providing an ergonomic workplace.

Equipped with swivel/brake casters, the clipx WIRE assist workstation saves set-up time as it can be moved throughout the shop floor.





## Specifications

- ✓ 2-meter lengths
- ✓ Size: WxH: 25 x 25 mm (1"x1") to 120 x 80 mm (5"x3")
- ✓ Material and color
  - PVC: Standard gray, white, blue
  - PC/ABS (Halogen-free): Gray and blue
- ✓ Narrow finger



## Features and benefits

- ✓ One part number for channel and cover
- ✓ Replacement covers available under a separate part number
- ✓ Score line for clean, tool-free removal of the fingers
- ✓ Simple cover installation and removal
- ✓ 2-meter (6 ½') lengths



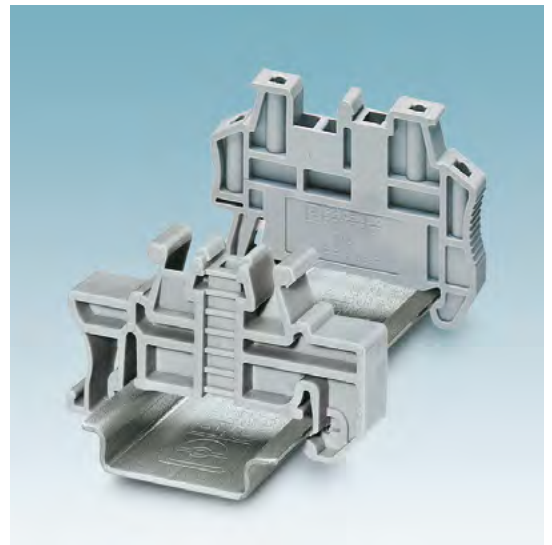
## DIN rail

- ✓ Sizes: 35/15, 35/7,5
- ✓ Perforated or unperforated
- ✓ Materials: Stainless steel (V2A), aluminum, copper, chrome, zinc-plated (galvanized)



## Mounting components for DIN rail

- ✓ End clamps for securing components
- ✓ Rail adapters to secure electrical devices
- ✓ Protective end caps



## DIN rail and wire duct cutting

- ✓ Burr free with no sharp edges
- ✓ Inch/metric measuring bar with stop lever
- ✓ Bench mounting for secure and safe cutting



DIN rail					
A. What size do you need?					
B. Do you need a 1-meter or 2-meter stick?					
C. Do you need it with or without holes?					
D. What material requirements do you have?					
Part #	Description	A. Size W/H (mm)	B. Length (M)	C. Perforated or unperforated	D. Material
0801733	NS 35/ 7,5 PERF 2000MM	NS 35/ 7,5	2	Perforated	Steel, galvanized, passivated with a thick layer
0801681	NS 35/ 7,5 UNPERF 2000MM	NS 35/ 7,5	2	Unperforated	Steel, galvanized, passivated with a thick layer
1201730	NS 35/15 PERF 2000MM	NS 35/15	2	Perforated	Steel, galvanized, passivated with a thick layer
1201714	NS 35/15 UNPERF 2000MM	NS 35/15	2	Unperforated	Steel, galvanized, passivated with a thick layer
0814681	NS 35/ 7,5 AL PERF 2000MM	NS 35/ 7,5	2	Perforated	Aluminum
0801704	NS 35/ 7,5 AL UNPERF 2000MM	NS 35/ 7,5	2	Unperforated	Aluminum
1207663	NS 35/15 AL UNPERF 1000MM	NS 35/15	1	Unperforated	Aluminum
1201756	NS 35/15 AL UNPERF 2000MM	NS 35/15	2	Unperforated	Aluminum
0801762	NS 35/ 7,5 CU UNPERF 2000MM	NS 35/ 7,5	2	Unperforated	Copper
1201895	NS 35/15 CU UNPERF 2000MM	NS 35/15	2	Unperforated	Copper
5604187	NS 35/58-AL 1M PERF	NS 35/58	1	Perforated	Aluminum - Raised rail
5604188	NS 35/58-AL 2M PERF	NS 35/58	2	Perforated	Aluminum - Raised rail

## Accessories

Protective hose	
A. Do you need a single or a double outlet?	
B. Do you want push-in or screw connection?	
C. Do you require GFI?	
<b>Push-in connection single outlets</b>	
0804165	EO-AB/PT/15
0804168	EO-AB/PT/LED/15
0804174	EO-AB/PT/LED/S/15
0804173	EO-AB/PT/S/15
<b>Screw connection single outlets</b>	
0804152	EO-AB/UT/15
0804509	EO-AB/UT/LED/20
0804160	EO-AB/UT/LED/S/15
0804159	EO-AB/UT/S/15
<b>Double-socket outlets</b>	
5600461	EM-DUO 120/15
5600525	EM-DUO 120/20
5601677	EM-DUO 120/15/IG
5601283	EM-DUO 120/15/SPD
5604063	EM-DUO 120/15/SPD/AUX
5604747	EM-DUO 120/15/V/H
5604776	EM-DUO 120/20/V/H
<b>Double-socket GFI outlets</b>	
5602519	EM-DUO 120/20/GFI
5603049	EM-DUO 120/20/GFI/AUX
5604777	EM-DUO 120/20/GFI/V/H
5602192	EM-DUO120/20/GFI/AUX/NO
5600462	EM-DUO/120/15/GFI
5600639	EM-DUO 120/15/GFI/AUX
5604775	EM-DUO 120/15/GFI/V/H

End brackets			
A. What size do you need?			
B. Do you want to snap it on or screw it down?			
Part #	Description	A. Width (mm)	B. Mounting
0800886	E/NS 35 N	9.5	Screw
3022276	CLIPFIX 35-5	5.15	Snap on
3022218	CLIPFIX 35	9.5	Snap on
1201662	E/AL-NS 35	10	Screw
3022263	CLIPFIX 15	5.2	Snap on
1401637	E/MBK	6.2	Screw

DIN rail and wire duct cutters		
Part #	Description	Purpose
1207585	PPS BASIC I/M	Bench mounted DIN rail cutting
1206230	PPS STANDARD I/M	Bench mounted DIN rail cutting w/ stamping bits
1206256	PPS COMPACT	Mobile DIN rail cutter
1207569	PPS CD M	Bench mounted wire duct cutter

## Value Add Solutions

Let Phoenix Contact's Value Add Solutions help you reduce your assembly time and wiring errors. We offer DIN rail cut to your specified lengths and hole placements, as well as fully customized DIN rail assemblies. Let us build your designed junction boxes, backplates, and cable harnesses, or assist you in kitting multiple Phoenix Contact components under one part number using our PROJECT complete software.

**+** KNOW YOUR  
**VALUE**

## DIN rail assemblies

Phoenix Contact's Value Add lean manufacturing resources provide fully assembled DIN rail-mounted products ranging from basic rail assemblies with marking, bridging, and accessories, to complex assemblies that are ferruled, wired, marked, and accessorized. Design any rail to be utilized across a wide variety of industries and applications using Phoenix Contact's complete line of screw, spring, or push-in terminal blocks, in addition to our broad range of DIN rail-mounted catalog items including relays, fuse blocks, circuit breakers, and power supplies.



## Custom junction boxes and enclosures

Custom enclosures manufactured by Phoenix Contact's Value Add team are populated with catalog components. Let our team provide an entire solution with pre-installed fuses in fuse blocks, jumpers, point-to-point ferruled internal electrical connections, and wire markers for error-free installation and system integration with upstream power and downstream remote sensors and devices.



## Value Add cable assemblies

Value Add cables manufactured by Phoenix Contact's Value Add team offer our customers an extension to our standard Phoenix Contact product catalog using modified standard catalog items from in-stock cables, connectors, marking material, and various other components.

- Custom wire prep, including ferruling, cable lugs, tin dipping, leave slugs on, and custom strip lengths
- Custom packaging
- Custom wiring
- Cable bundling
- Third party components
- Use of ANY Phoenix Contact connectors (ex: IFC field wireables, COMBICON, DSUB, etc.)
- Custom kitting
- Custom marking/labeling
- Using cable conduit and cable glands
- HEAVYCON harnessing



## Kitting and bagging

Phoenix Contact offers a wide variety of custom kits including terminal blocks, markers, and accessories, all labeled and bundled into anti-static bags. Choose from finished rail assemblies in cartons or finished rails banded and shipped to your facility on a skid. All kits can be ordered and delivered using one simple part number.







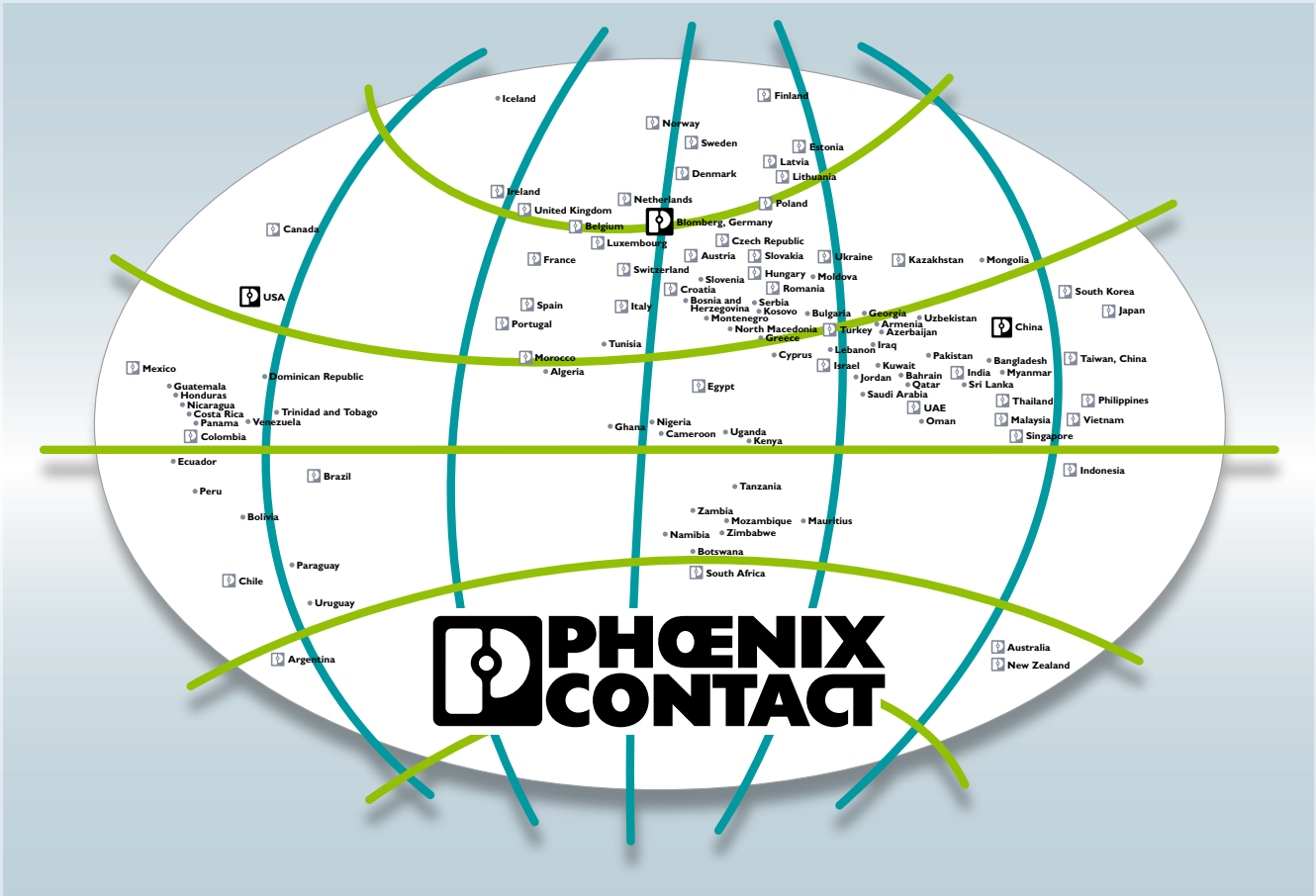
# LIMITED LIFETIME WARRANTY

BUILD WITH CONFIDENCE

## Build with confidence

Our Limited Lifetime Warranty is our promise to you that the products you install in your control cabinets are built to last. In industry and infrastructure, we stand with you. Simply register and relax. Isn't it time you trusted Phoenix Contact to build your cabinet confidence?

Register today at: [www.phoenixcontact.com/LLW](http://www.phoenixcontact.com/LLW)



## Open communication with customers and partners worldwide

Phoenix Contact is a global market leader based in Germany. We are known for producing future-oriented products and solutions for the electrification, networking, and automation of all economy and infrastructure sectors. With a global network reaching more than 100 countries with over 20,000 employees, we maintain close relationships with our customers, which we believe is essential for our joint success. Our wide range of innovative products makes it easy for our customers to implement the latest technology in various applications and industries. This especially applies to the target markets of energy, infrastructure, industry, and mobility.

You can find your local partner at  
[phoenixcontact.com](https://www.phoenixcontact.com)