



Industrial PCs

Design, quality, and service that is ready for the future

Industrial PCs

Industrial personal computers (IPCs) are essential for the efficient operation and monitoring of systems and machines. From PCs installed directly on the machine for field operation to complex visualization concepts for extensive automation systems – you will find the right solution for your application within the Phoenix Contact product portfolio.



Box PCs – compact solutions for machine-oriented data processing

Our compact box PCs are designed for a wide range of automation tasks – from simple data acquisition to complex IoT and edge applications. With DIN rail or wall mounting, you can benefit from a particularly robust and space-saving design. Due to their scalable performance and the wide range of interfaces, our embedded PCs provide the appropriate IPC solution for practically every industry and application.

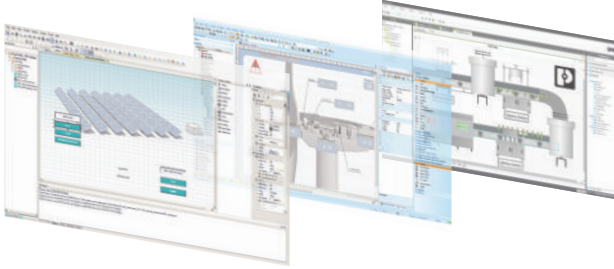


Rackmount PCs – powerful solutions for demanding applications

Our rackmount PCs provide you with maximum system performance for the acquisition and processing of large volumes of data in industrial automation or machine learning for machine building and systems manufacturing. The rackmount computers conform to the universal 19-inch standard, with the flexibility to extend according to your application. Benefit from the high performance of these systems.

Software for visualization

Whether in the central control room, in production, or directly on the machine, efficient automation requires the right visualization. Whatever your visualization task, we have the right software. Benefit from our extensive portfolio covering all aspects of operation and monitoring for your IPCs.



Contents

Industrial PCs	
Box PCs	8
Rackmount PCs	12
Panel PCs	14
Small Panel PCs	16
Stand-alone IP65	18
protected panel PCs	
Industrial touch monitors	20
Edge programmable computers	22



Panel PCs – modern solutions for operation and monitoring

Benefit from the advantages of our scalable and modern panel PCs for acquiring, processing, measuring, controlling, and visualizing your data. Touch panel PCs are the business card for every visualization solution. Available in flush-mounted or support-arm versions with IP65 or IP69K protection, industrial panel PCs impress with their robustness, performance, and state-of-the-art touch technology.



Touch monitors – a robust front end for machine operation

For operating concepts where the industrial PC and industrial monitor are physically separated, our functional multi-touch monitors are the ideal solution. These robust devices with industrial touchscreens can be used directly on the machine. Numerous graphical interfaces enable easy connection to any PC.

Industrial PCs

Design, quality, and service that is ready for the future

Are you looking for intelligent solutions for the operation and monitoring of machines and systems? Phoenix Contact offers a wide range of industrial PCs for special industrial requirements. We will provide you with an impressive package that delivers exceptional design, quality, and service.

Design

Industrial PCs offer an attractive and intuitive product design. Compact and functional, they can be incorporated seamlessly into your system or machine design and are the perfect interface between user and machine.

Quality

Made by Phoenix Contact – you can rely on our promise of quality. Our focus is to provide durable components that meet industry standards and stringent requirements. Our IPC portfolio is produced from high-quality and reliable components and always offers the best performance.

Service

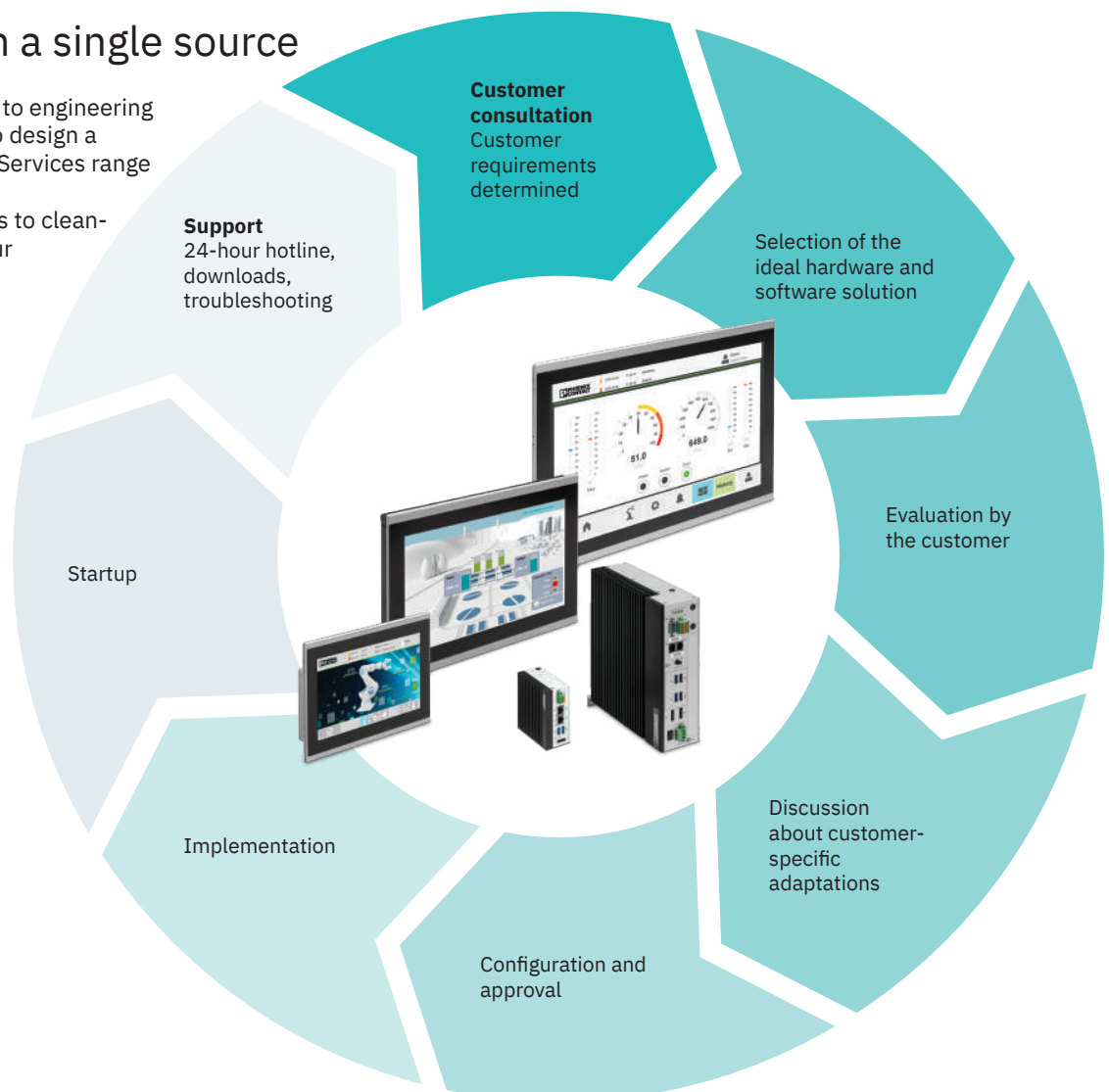
Benefit from our comprehensive service. From product selection to retrofitting your existing industrial systems, we develop the perfect concept for individual automation tasks with our customers.

Ready for the future – open automation

Our IPC portfolio is ready for open automation solutions. The runtime of our edge PCs feature all the advantages of the PLCnext Technology ecosystem. Benefit from simple integration into an existing IT infrastructure through centralizing data in the cloud, closing the gap between the IT and OT worlds.

Everything from a single source

From customized solutions to engineering support, we can help you to design a better automation system. Services range from pre-loaded software images to clean-sheet designs based on your requirements.



Our added value



Multi-touch

There is a sensor pattern for projective capacitive touchscreen (PCAP). Changes in the electrical field are evaluated individually in each part of the pattern. This enables multi-touch functions and gesture control.



Cost savings

Phoenix Contact offers cost-effective alternatives for operating and monitoring tasks.



Enhanced touch capabilities

Latest touchscreen technology allows the operation of PCAP multi-touch interfaces with gloves. These touchscreens are also permissible in moist and wet locations.



Fanless

Carefully selected components and a sophisticated passive cooling system enable a completely fanless operation. This increases device reliability, decreases dust contamination, and reduces noise.



Remote access

The Visu+ mobile visualization app or the HTML5 web server integrated in the runtime enable convenient use of your visualization on a smartphone or tablet. SCADA functions such as trend display or alarm handling are also available on mobile end devices.



SSL encryption

Secure communication with SSL-encrypted data transmission.



Hardware security

Implement a module to increase the security of a PC on a hardware level. The module is used by software to encrypt the system and protect intellectual property and data.



Extended temperature range

This refers to the ambient temperature in which the device will be permanently operated. Special components are often used for systems that are designated for extended temperature ranges.



High ingress protection

Protected from dust, water, and other particles.



Service-friendly

If maintenance is required, certain components of the device are accessible without the need for tools.

Industrial PCs

The right system for every application

As the interface between human and machine or as a central system controller, industrial PCs are an essential component in industrial applications. In addition to box PCs, the Phoenix Contact portfolio also includes powerful panel PCs as well as devices for special industrial requirements. Enjoy the benefits of a robust and configurable solution for collecting, processing, measuring, controlling, and visualizing your data.



1

Box PCs

- The right performance for every application with Intel Atom® through Intel® Core™ processors
- Passive cooling and no moving parts
- Access to all important components without the use of tools
- Easy connection to existing I/O devices via serial interfaces

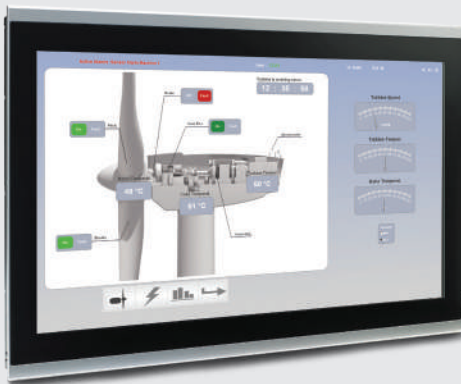
➤ For further information, refer to pages 8 to 11

2

Panel PCs

- The right performance for every application with Intel® Atom™ through Intel® Core™ processors
- Display sizes ranging from 10" to 21.5" in 16:9 format
- PCAP multitouch
- Passive cooling and no moving parts

➤ For further information, refer to pages 14 to 19



3

Touch monitors

- Display sizes ranging from 10" to 23.8" in 16:9 format
- PCAP multi-touch functionality
- High shock resistance and electromagnetic protection
- Easy VESA 100 mounting
- Same look and feel with our Panel PC

> For further information, refer to pages 20 to 21

4

Programmable edge computer

- Connectivity from sensor to cloud
- Based on PLCnext Technology
- Integrated programming tools
- Bridge between IT and OT

> For additional information, refer to pages 22 to 23

Box PCs

Box PCs are designed to work in a wide variety of automation tasks, from simple data collection to high-speed control systems. Their rugged design, various mounting options, and scalable performance provide the right IPC solution for virtually any industry or application.



Box PCs

General technical data

- Operating systems (configurable):
Windows® 10 IoT Enterprise 2021
- Housing: sheet steel/aluminum
- Degree of protection: IP30
- Power supply: 24 V DC ±20%
- Mounting type: wall or DIN rail mounting
- Approvals: UL/cUL, Class I, Div 2


Your advantages

- ✓ Passive cooling and no moving parts
- ✓ Service-friendly with easily accessible components
- ✓ Individually configurable
- ✓ Windows® 11 ready
- ✓ Secure hardware option, equipped with TPM 2.0



1
2
3
4

Box PCs

VL3 box PCs				
				
Designation	VL3 BPC			
Item number	1376797			
Processor	Intel® Celeron® 6305E 1.8 GHz (dual-core)	Intel® Core™ i3-1115G4E 3.0 GHz (dual-core)	Intel® Core™ i5-1145G7E 2.6 GHz (quad-core)	Intel® Core™ i7-1185G7E 2.8 GHz (quad-core)
Cooling	Passive			
RAM (configurable)	Max. 64 GB DDR4			
Data memory (configurable)	2 x m.2 SSD			
RAID support (configurable)	0/1			
Ethernet interfaces	2 x (10/100/1000 Mbps), RJ45, Intel® i225LM; i211AT			
USB	4 x USB 3.1			
Serial interfaces	1 x COM (RS-232/422/485) Optional: Wireless LAN Optional: Extended Function modules			
Hardware security	Trusted Platform Module (TPM 2.0)			
Video output	2 x DisplayPort (DP++)			
Graphics processor	Intel® HD Graphics	Intel® HD Graphics 4400		
PCI/PCIe slots (configurable)	1 x full size PCIe			
Dimensions, W x H x D (mm)	70 x 225 x 230 mm (base system) // 109 x 225 x 230 mm (with PCIe)			
Weight (kg)	3.7 (4.2 with PCIe expansion)			3.8 (4.3 with PCI expansion)
Power consumption ¹ (W) ¹	97	97	112	120
Operating temperature	-20°C to +50°C			
Storage temperature	-40°C to +70°C			
Relative humidity	10% to 95%, non-condensing			

¹ Power consumption value represents maximum power consumption without a PCIe interface. Actual system power consumption depends on system loading. See user manual for details.

Compromising between size, performance, and connectivity is no longer necessary

The palm-sized embedded VL3 UPC is the perfect fit for IIoT applications such as edge computing or decentralized data collection and processing. The passive cooling design, use of M.2 SSD mass storage devices, and expansion options in the robust metal housing allow for 24/7 operation in demanding industrial environments.



Compact box PCs

General technical data

- Graphics processor: Intel® UHD Graphics for 10th gen. processors
- Video output: 1 x DisplayPort (DP++)
- Ethernet interfaces: 2 x (10/100/1000 Mbps), RJ45, Intel® i225
- USB: 2 x USB 3.1 gen. 1
- Hardware security: Trusted Platform Module (TPM 2.0)
- Operating system: Windows® 10 IoT, Linux
- Operating temperature²: -20°C to +60°C
- Storage temperature: -40°C to +85°C
- Relative humidity: 10% to 95%, non-condensing
- Housing: sheet steel/aluminum
- Degree of protection: IP30
- Power supply: 24 V DC ± 20%
- Mounting: DIN rail (wall mount optional)
- Approvals: CE, UL/cUL

Your advantages

- ✓ A modern hardware platform that is scalable in performance, memory, and storage
- ✓ Long-term available Elkhart Lake processors
- ✓ Best-in-class connectivity options enable communication to a multitude of networks and peripherals simultaneously
- ✓ Compact form factor for installations into small enclosures



1
2
3
4

Box PCs

VL3 UPC series box PCs



Designation	VL3 UPC 1110	VL3 UPC 1320	VL3 UPC 2430	VL3 UPC 2440	VL3 UPC
Item number	1433148	1433147	1433152	1697948	1459506
Processor	Intel® Atom® x6211E 1.3 GHz (2 core)		Intel® Atom® x6413E 1.5 GHz (4 core)	Intel Atom x6413E 1,5 GHz (4 Core)	Configurable
RAM	2 GB LPDDR4	8 GB LPDDR4	16 GB LPDDR4	16 GB LPDDR4	Configurable
Data memory	30 GB NVMe SSD	60 GB NVMe SSD	120 GB NVMe SSD	240 GB NVMe SSD	Configurable
Optional Serial interfaces	N/A				2 x COM (RS-232/422/485)
Optional Wireless LAN	N/A				1 x WLAN (a, b, g, n)
Dimensions, W x H x D (mm)	100 x 100 x 50				
Expansion option 1	N/A				2 x 10/100/1000, RJ45 (i225), 1 x M.2 2242 B-key (storage)
Expansion option 2	N/A				1 x 4G / LTE + microSIM, 1 x M.2 2242 B-key (storage)
Dimensions with expansion option, W x H x D (mm)	N/A				100 x 100 x 80
Weight (kg)	0.70				0.70 / 0.96
Power consumption ¹ (W) ¹	19.7				Depends on configuration

¹ Power consumption value represents typical power consumption. Actual system power consumption depends on system loading. See user manual for details.

² Temperatures listed require a minimum of 0.5 m/s airflow.

Rackmount PCs

For large, centralized automation installations

For the data collection and processing of large amounts of sensor data, extensive SCADA visualization and image processing are available with the powerful 19" rack-installed industrial PCs from Phoenix Contact. Offering advanced performance for demanding applications, the 19" rack form factor allows simple installation into controlled industrial environments.



Industrial PCs for 19" racks

General technical data

- Ethernet interfaces: 2 x (10/100/1000 Mbps), RJ45
- Operating system (configurable): Windows® 10
- Power supply: 110 to 230 V AC
- Operating temperature: 0°C to +50°C
- Storage temperature: 0°C to +70°C
- Relative humidity: 5% to 95%, non-condensing
- Housing: powder-coated sheet metal
- Protection class: IP20
- Approvals: CE, UL/cUL

Your advantages

- ✓ Fits perfectly into 19" racks
- ✓ Available in sizes 2U and 4U
- ✓ Mass-storage devices are mechanically protected and locked
- ✓ Easy serviceability with hot-swappable mass-storage devices
- ✓ Easily serviceable air filters



Rack IPCs



Designation	BL Rackmount 2U
Item number	2400063
Processor (configurable)	Intel® Core i3-9100TE, 2.2 GHz // Intel Core i7-9700TE 1.8 GHz
Cooling	Active – forced air
RAM configurable	8 GB to 32 GB DDR4
Data memory (configurable)	Up to 4 TB 3.5" HDD or up to 480 GB 2.5" SSD per drive
RAID level (configurable)	0/1
Number of slots for mass-storage devices	2
USB	2 x USB 2.0, 2 x USB 3.0
Serial ports	1 x COM (RS-232), 1 x COM (RS-232/422/485)
Video output	DVI-I
Graphics processor	Intel® Graphics 630
PCI/PCIe slots (configurable)	3 x PCI, 1 x PCIe x8, 1 x PCIe x16
Mounting	Rackmount 2U
Dimensions, W x H x D (mm)	482 x 89 x 429
Weight (kg)	13.5
Power consumption (W)	500

Panel PCs

Panel PCs are the front end of any high-end control or visualization task. The VL3 panel PCs provide a reliable user interface for a multitude of applications and industries requiring touchscreen operation and rugged design. Combined with the Visu+ software, you can design high-end, graphics-rich visualization systems.



Panel PCs

General technical data

- Display type: TFT
- Colors: 16.7 million
- Operating system (configurable): Windows® 10 IoT Enterprise 2021
- Operating temperature: -20°C to +50°C
- Storage temperature: -40°C to +70°C
- Relative humidity: 10% to 95%, non-condensing
- Housing: aluminum/sheet steel
- Degree of protection: IP66 (front), IP30 (back)
- Power supply: 24 V DC ±20%
- Mounting type: front installation
- Approvals: UL/cUL, Class I, Div 2

Your advantages

- ✓ Passive cooling and no moving parts (excludes i7)
- ✓ Easy access to all essential components, including storage devices and RTC battery
- ✓ Glove-capable PCAP touchscreens in full HD resolution
- ✓ Individually configurable
- ✓ Windows® 11 ready



VL3 series panel PCs



Designation	VL3 PPC		
Item number	1376798		
Display size (cm / in)	39.6 / 15.6"	47 / 18.5"	54.6 / 21.5"
Touch technology	10 pt. projected capacitive (PCAP), glove capable, wet application suitable		
Resolution, W x H (pixels)	1920 x 1080 (Full HD)		
Brightness (cd/m ²)	450	350	400
Backlight MTBF (h)	50,000		
Viewing angle, left / right / top / bottom (°)	85 / 85 / 85 / 85	89 / 89 / 89 / 89	89 / 89 / 89 / 89
Processor	Celeron 6305E 1.8 GHz (2 core); Core i3-1115G4E 3.0 GHz (2 core); Core i5-1145G7E 2.6 GHz (4 core); Core i7-1185G7E 2.8 GHz (4 core)		
Cooling	Passive (i7 model with convection booster)		
RAM (configurable)	Up to 64 GB DDR4		
Data memory (configurable)	2 x m.2 SSD, RAID capable		
Interfaces	2 x 10/100/1000 Mbps, RJ45, Intel i211 / i225 4 x USB 3.1 1 x COM (RS-232/422/485), BIOS configurable 1 x DisplayPort (DP++)		
System expansion options	WLAN a, b, g, n 4 x COM (RS-232/422/485), BIOS configurable 4 x COM (RS-232/422/485), ISOLATED, BIOS configurable 1 x GB Ethernet + 1 x COM (RS-232/422/485), 2 x USB		
Graphics processor	Intel UHD Graphics (Celeron, i3) / Intel Iris Xe (i5; i7)		
Dimensions incl. front plate, W x H x D (mm)	398 x 273 x 89	465 x 310 x 89	532 x 346 x 89
Mounting cutout, W x H (mm)	388 x 263	455 x 300	522 x 336
Weight (kg)	6.9 (7.1 with i7 configuration)	8 (8.2 with i7 configuration)	8.8 (9 with i7 configuration)
Power consumption (W) ¹	70 / 82 / 84 / 91	72 / 80 / 84 / 91	72 / 80 / 91 / 93

¹ Power consumption value represents maximum power consumption at 24V DC without system expansion options. Actual system power consumption depends on system loading. See user manual for details.

Small Panel PCs

The small panel PCs VL3 PPCS panel provide a reliable user interface with modern hardware platform and best in class connectivity options. VL3 PPCS share the same look and feel with VL3 PPC and TP 6000 / WP 6000 HMI panels. Besides the uniform look, they also offer panel cut-out compatibility for seamless scalability between product families.



Small Panel PCs

General technical data

- Display type: TFT
- Colors: 16.7 million
- Operating system (configurable): Windows® 10 IoT Enterprise 2021
- Hardware security: TPM 2.0
- Ethernet interfaces: 2 x (10/100/1000 Mbps), RJ45, Intel® i225
- USB: 2 x USB 3.1 gen. 1
- Operating temperature: -20°C to +60°C
- Storage temperature: -40°C to +70°C
- Relative humidity: 10% to 95% non-condensing
- Degree of protection: IP66 (front) IP30 (back)
- Power supply: 24 V DC ±20%
- Mounting type: panel or VESA

Your advantages

- ✓ A modern hardware platform that is scalable in performance, memory, and storage
- ✓ Glove capable PCAP touch screens
- ✓ Long-term available Elkhart Lake processors
- ✓ Best-in-class connectivity options enable communication to a multitude of networks and peripherals simultaneously
- ✓ Windows 11 ready

1

2

3

4

Box PCs

VL3 PPCS



Designation	VL3 PPCS10 1320	VL3 PPCS10 2430	VL3 PPCS12 1320	VL3 PPCS12 2430	VL3 PPCS
Article number	1494298	1494294	1494296	1494293	1644121
Display size (cm / in)	25.65 / 10.1"		30.73 / 12.1"		Configurable
Touch technology	projected capacitive Touch (PCAP)				
Resolution, W x H (pixels)	1280 x 800 (WXGA)				
Brightness (cd/m ²)	500		400		Configuration dependent
Backlight MTBF (h)	50,000 hours				
Viewing angle, left / right / top / bottom (°)	85 / 85 / 85 / 85		88 / 88 / 88 / 88		Configuration dependent
Intel® Atom® x6211E 1.3 GHz (2core)	•		•		•
Intel® Atom® x6413E 1.5 GHz (4core)		•		•	•
RAM	8 GB LPDDR4	16 GB LPDDR4	8 GB LPDDR4	16 GB LPDDR4	8 GB or 16 GB LPDDR4
Data memory	60 GB NVMe SSD	120 GB NVMe SSD	60 GB NVMe SSD	120 GB NVMe SSD	60 GB or 120 GB NVMe SSD
Standard Interfaces	1 X DP++ (1.4); 2 X USB 3.2 GEN.1; 2 X Ethernet 10/100/1000 (i-225-IT); 1 x RS-232/422/485				
System expansion options	N/A			WLAN (a, b, g, n) 1 x M.2 B+M key 2 x Ethernet (i225-IT) 4G/LTE	
Graphics processor	Intel® UHD Graphics for 10 th gen. processors				
Dimensions incl. front plate, W x H x D (mm)	263 x 200 x 6.9		302 x 229 x 6.9		
Mounting cutout, W x H (mm)	252 x 189		292 x 219		
Weight / Weight incl. Expansion	6.9 kg		8.0 kg		

Stand-alone IP65-protected panel PCs

The BL2 PPC AIO65 is a family of configurable, all-around IP65-protected industrial PCs. Choose from a variety of performance classes, display and mounting options, as well as matching expansion options, including the push-button box and stack light. The modular design of the BL2 PPC AIO65 offers an advanced level of solution flexibility – directly on the machine.



All-in-one panel PCs with IP65 protection

General technical data

- Display type: TFT
- Colors: 16.7 million
- Ethernet interfaces: 2 x (10/100/1000 Mbps), RJ45, Intel® i210-AT
- USB interfaces: 2 x USB Host 2.0, 2 x USB 3.0
- Serial interfaces: 1 x COM (RS-232/422/485)
- Operating System: Windows® 10 IoT Enterprise
- Operating temperature: 0°C to +45°C
- Storage temperature: -40°C to 70°C
- Relative humidity: 5% to 95%, non-condensing
- Housing: Aluminum
- Degree of protection: IP65 all-around
- Power supply: 24 V DC ±20%
- Mounting types: VESA, swing arm mount, pole mount
- Approvals: UL/cUL

Your advantages

- ✓ All-around IP65 protection without the need for a cabinet
- ✓ Attractive, modern industrial design
- ✓ Scalable processor performance
- ✓ Easy installation and service
- ✓ Highly reliable with passive cooling and solid state mass storage media
- ✓ Optional push-buttons box and stack light



BL2 series all-in-one panel PCs



Designation	BL2 PPC AIO65 2000	BL2PPC AIO65 7000	BL2 AIO65 9 PB Box	BL2 AIO65 11PB Box
Item number	1138366	1138367	1160210	1160209
Display size (cm / in.)	39.6 / 15.6"; 47 / 18.5"; 54.6 / 21.5"		PB boxes are compatible only with pole-mount, not VESA Push-button box, prepared to accommodate nine 22-mm push-buttons. Wiring and buttons not included.	Push-button box, prepared to accommodate eleven 22-mm push-buttons. Wiring and buttons not included.
Touch technology	PCAP multi-touch			
Resolution, W x H (pixels)	1920 x 1080			
Brightness (cd/m ²)	400 / 450 / 300			
Backlight MTBF (h)	50000			
Viewing angle, left / right / top / bottom (°)	15.6" and 18.5" display: 85/85/80/80 21.5" display: 89 / 89 / 89 / 89			
Processor	Intel® Pentium® N4200 1.1 / 2.5 GHz (4-core) Intel Celeron 7305E 1 GHz (5-core)	Intel® Core™ i5-7442EQ 2.1 / 2.9 GHz (4-core) Intel Core i7-1265UE 4,7 GHz (10-core)		
RAM (configurable)	Max. 16 GB DDR5	Max. 32 GB DDR5		
Data memory (configurable)	mSATA SSD			
Graphics processor	Intel® HD Graphics 505	Intel® HD Graphics 630		
Dimensions VESA mount, W x H x D (mm)	410 x 275 x 86 / 475 x 313 x 86 / 546 x 352 x 86			
Dimensions pole mount, W x H x D (mm)	410 x 275 x 100 / 475 x 313 x 100 / 546 x 352 x 100			
Weight VESA mount (kg)	7.7 / 8.4 / 9.4			
Weight pole mount (kg)	8.6 / 9.3 / 9.7			
Power consumption (W) ¹	49.4 / 52.1 / 48	64.6 / 67 / 60		

¹ Power consumption value represents maximum power consumption. Actual system power consumption depends on system loading. See user manual for details.

Industrial touch monitors

Phoenix Contact offers multi-touch monitors in a modern industrial design for industrial operating concepts where the processing unit and display unit are physically separated. The robust devices can be used directly on the machine. A choice of graphical interfaces allows for easy connection to any PC without the need for adapters or converters.



Touch monitors

General technical data

- Display type: TFT
- Operating temperature: -20°C to +60°C
- Storage temperature: -40°C to +70°C
- Relative humidity: 10% to 95% non-condensing
- Degree of protection: IP66 (front) IP30 (back)
- Power supply: 24 V DC ±20%
- Mounting type: panel or VESA

Your advantages

- ✓ Glove capable PCAP multi touch screens
- ✓ Multiple interfaces
- ✓ Slim design
- ✓ Same appearance and cut-out dimensions as TP 6000 / WP 6000 HMIs and VL3 Panel PCs

1

2

3

4

Box PCs

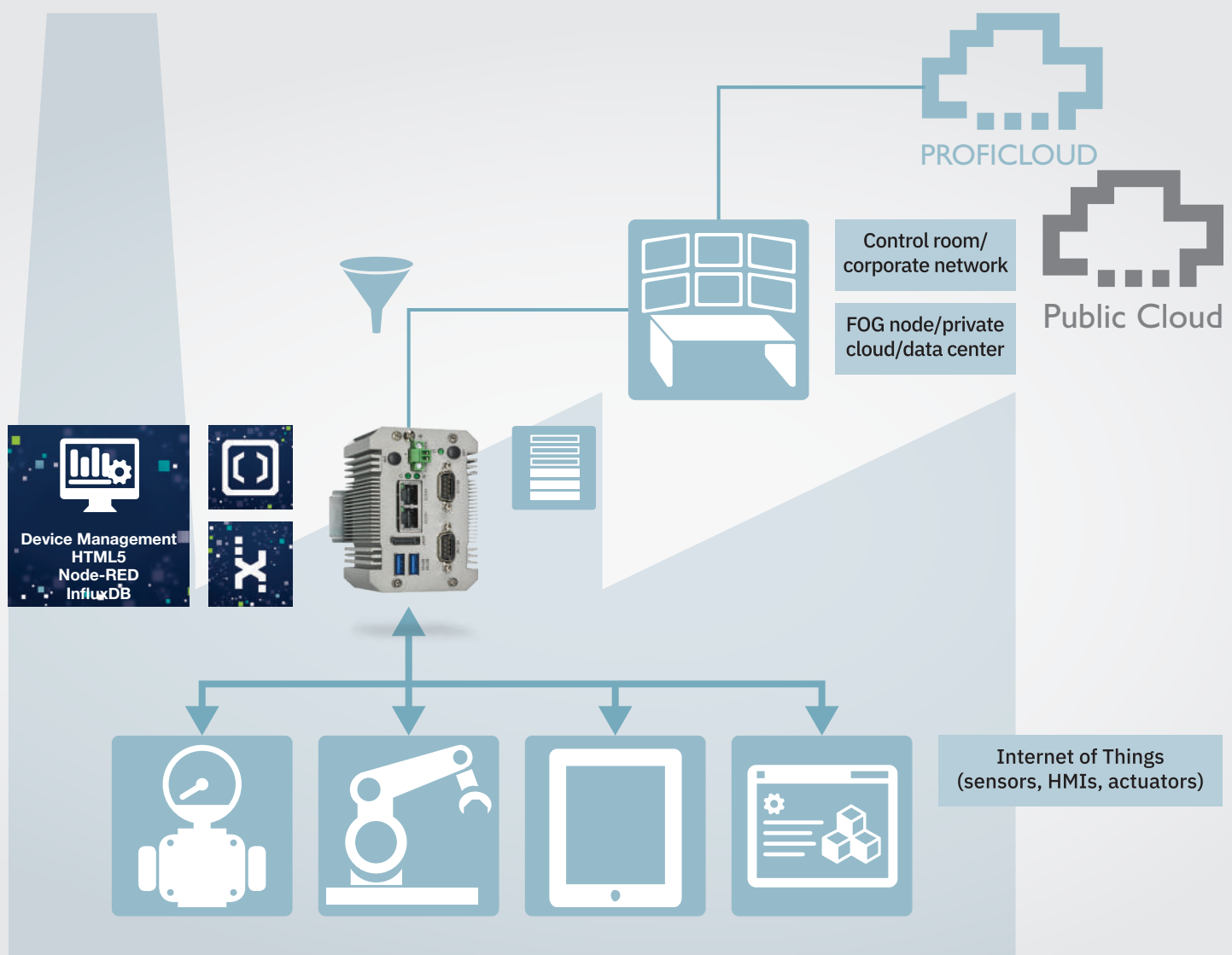
Industrial monitors with PCAP touch



Designation	VL3 FPM 101	VL3 FPM 121	VL3 FPM 156	VL3 FPM 185	VL3 FPM 215
Item number	1580690	1580720	1580719	1580718	1580715
Display size (cm/in)	26.7 / 10.1"	30.7 / 12.1"	39.6 / 15.6"	47 / 18.5"	54.6 / 21.5"
Touch technology	Projective capacitive (PCAP)				
Resolution, W x H (pixels)	1280 x 800 (WXGA)		1920 x 1080 (FHD)		
Brightness (cd/m ²)	500	400	450	350	400
Backlight MTBF (h)	50.000				
Viewing angle, left / right / top / bottom (°)	85 / 85 / 85 / 85	88 / 88 / 88 / 88	85 / 85 / 85 / 85	89 / 89 / 89 / 89	
Dimension incl. front plate W x H x D (mm)	263 x 200 x 52	302 x 229 x 52	398 x 273 x 52	465 x 310 x 52	532 x 346 x 52
Mounting cutout, W x H (mm)	252 x 189	292 x 219	388 x 263	455 x 300	522 x 336
Weight (kg)	3.5	4.1	4.2	5.1	9.8
Power consumption (W)	19	21.5	30.5	32.2	32.9

Optimized data usage with edge computing for PLCnext Technology

Process your data at the edge of your network and take advantage of modern cloud solutions to save resources. Data processing close to data sources reduces network latency and increases the response time and flexibility of your application. These controllers combine the ruggedness of industrial PCs with open PLCnext Technology, enabling the setup of intelligent IoT edge solutions to close the gap between IT and OT worlds.



Programmable edge computer

General technical data

- Ethernet interfaces: 2 x (10/100/1000 Mbps), RJ45, Intel i210
- Operating system: Linux
- Operating temperature: 0°C to 50°C
- Storage temperature: -40°C to 85°C
- Permissible humidity: 5% to 85%, non-condensing
- Housing material: Aluminum
- Degree of protection: IP30
- Power supply: 12-30 V DC ±20%
- Approvals: CE, UL
- PLCnext
- Node-RED
- Apps for direct download via the PLCnext Store
- HTML5-based configuration
- Local HTML5 server to support web-based visualization (eHMI)

Your advantages

- ✓ Pre-installed software tools such as Node-RED provide a local time-series database and simple cloud connection
- ✓ PLCnext-programmable
- ✓ Multiple configuration and programming tools
- ✓ Rugged, industrial PC hardware
- ✓ Perfect for maximizing application uptime and data retention
- ✓ Reduced network data traffic and latency



EPC 1500 series industrial edge computers



	EPC 1502	EPC 1522
Designation	EPC 1502	EPC 1522
Item number	1185416	1185423
Processor	Intel® Celeron® N3350 1.1/2.4 GHz (dual core), passive cooled	
RAM	2 GB LPDDR4	4 GB LPDDR4
Storage	32 GB eMMC (onboard)	32 GB eMMC (onboard), 128 GB M.2 SSD
Interfaces	2 x USB 3.0	2 x USB 3.0, 2 x COM
Hardware security	Trusted Platform Module (TPM 1.2)	
Video output	1 x DisplayPort (DP++)	
Dimensions, W x H x D (mm)	97 x 46 x 94	97 x 63 x 94
Weight (kg)	0.55	0.65
Power consumption (W)	10.8	12.72
Device management	Pre-installed user interface via local HTML	
PLCnext inside	Yes	
Cloud	Local administration of Proficloud, AWS, Azure, Google Cloud	

Open communication with customers and partners worldwide

Phoenix Contact is a global market leader based in Germany. We are known for producing forward-thinking products and solutions for the comprehensive electrification, networking, and automation of all sectors of the economy and infrastructure. With a global network, we maintain close relationships with our customers, something we believe is essential for our common success.

Trova il tuo partner locale su
phoenixcontact.it

