

## CUSTOM PACKAGING AND LABELING

### Packaging:

- Determined by dimensions
- Protective wrapping
- Corrugated paper
- Boxing

### Labeling:

- Package
- Cable assembly
- Individual components



## OUR MISSION

At Phoenix Contact, our approach is innovative, sustainable, and based on partnership.

Our value-added solutions help our customers across all industries develop sustainable applications with more efficient processes and reduced costs on the path to a smart world.

Our **Value Add Solutions** provide customized products for junction boxes, enclosures, and back panels to meet customer requirements. Phoenix Contact offers an array of products and capabilities to implement into your specified box for better organization and accessibility. Value Add junction boxes reduce assembly and testing/approval time, further streamlining the ordering process with a single part number. Junction box solutions are manufactured here in our U.S. manufacturing facility, providing customers with a quick turnaround from quote through production!

Have an opportunity and don't see a specific component/capability mentioned here?

**Ask us about additional components, materials, and capabilities not shown!**

## QUALITY AND APPROVALS

### Systems and processes

- Mandatory 1st article inspection
- Engineering design process tracks and manages design changes

### Integrated management system

#### registrations

- Quality: ISO 9001:2000
- Environmental: ISO 14001:2004
- Safety: BSI OHSAS 18001:2007



### PHOENIX CONTACT USA

P.O. Box 4100

Harrisburg, PA 17111-0100

Phone: 800-888-7388

717-944-1300

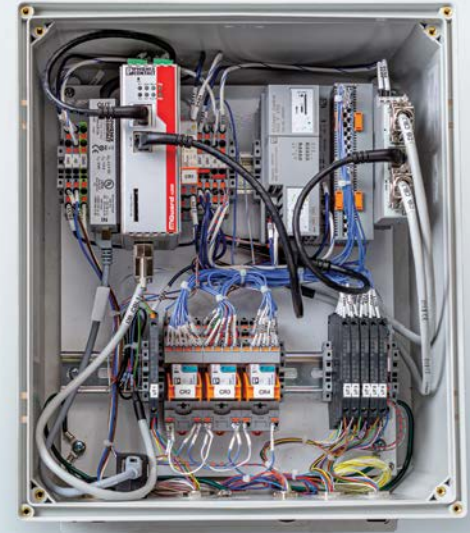
Technical Service: 800-322-3225

Fax: 717-944-1625

Email: [info@phoenixcontact.com](mailto:info@phoenixcontact.com)

Website: [www.phoenixcontact.com](http://www.phoenixcontact.com)

# + KNOW YOUR VALUE



## VALUE ADD

# Junction box solutions

1648318-00:10.23

© 2023 PHOENIX CONTACT



## CUSTOM ENCLOSURES

- Single part number for ordering
- Reduced assembly time
- Necessary testing and approvals
- Prewired for field terminators

### CLIPSAFE product line options

#### Polyester



#### Stainless steel



## HAVE YOUR OWN ENCLOSURE?

Allow Value Add Solutions to do the work for you by partnering to manufacture your enclosures.



### Cutouts and punches



## CONTROL CABINET ACCESSORIES

#### Mounting plate



#### Screws



#### Fixing brackets



#### Key



## JUNCTION BOXES

Higher complexity with Phoenix Contact and non-Phoenix Contact parts



## DIN RAIL OPTIONS

#### Relays



#### Breakers



#### Power supplies



#### Fuse boxes



#### Terminal blocks



#### Surge protection



*And more!*

## WIRE MANAGEMENT

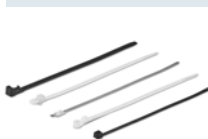
#### Wire tags



#### Protective hosing



#### Cable ties



#### Cable glands



#### Cable duct



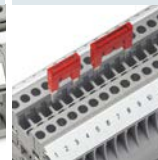
## JUNCTION BOX + PREMOUNTED TERMINAL BLOCKS

Select a junction box with premounted DIN rail to save time

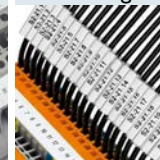
#### Terminal-block marking



#### Bridging



#### Wire marking



#### Enclosure labeling



### Panel feed-through products

#### HEAVYCON



#### Circular connectors



#### Cable entry systems



## ELECTRICAL SOCKETS

- Electrical outlets and service interfaces provide flexibility for a variety of applications
- Can be mounted on DIN rail or directly mounted

#### AC sockets



#### RJ45



## MOUNTING MATERIALS

- Attach connections and components quickly and safely
- Utilize all the space available

#### End brackets



#### Neutral busbars

