



**COMPLETE
CABINET
CONFIDENCE**

BUILD WITH CONFIDENCE

Partner Network Portfolio

Your Trusted Partner for
Comprehensive Solutions

2025



Inspiring Innovations

Discover the Phoenix Contact Partner Network

At Phoenix Contact, our strength lies not only in our innovation and product excellence—but in the trusted network of authorised partners who help bring our technology to life across Australia. We are proud to introduce you to that network: a carefully selected group of partners who deliver local expertise, technical know-how, and tailored support to help you succeed.

Our partners are more than just suppliers. They are industry specialists with a deep understanding of local markets and customer needs. Backed by Phoenix Contact's global leadership, they provide intelligent solutions that drive connectivity, improve efficiency in cabinet building, ensure power reliability, and enable smart automation.

The Phoenix Contact Partner Network connects you with trusted experts who offer proven capabilities, strategic locations, and valuable support throughout your project journey. Whether you're designing, building, or maintaining systems, our people, products, and partners are here to power your progress.

The Phoenix Contact team are here to help you achieve your goals.

Kind Regards,



Rohan Hungerford
Managing Director Phoenix Contact, Australia & New Zealand

Empowering the All Electric Society[®]



ELECTRIFICATION



NETWORKING



AUTOMATION





Build with complete confidence

Phoenix Contact is a global market leader in industrial electronics and automation technologies with a comprehensive product and service offering that ensures the most functional, reliable, innovative, future proof, and cost-effective control cabinet solution.

Partnering with Phoenix Contact ensures an unparalleled offering, consisting of:

- ★ **Lifetime Warranty**
The industry's most comprehensive warranty program, guarantees you long-term reliability of your systems and applications.
- ★ **Price Guarantee**
The perfect combination of price and features.
- ★ **Availability Guarantee**
We help you build effective and efficient systems fast by providing you products right when you need them.
- ★ **E-Platform**
Information at your fingertips enables automatic checking and direct ordering.
- ★ **Industry 4.0/IoT Readiness**
Be ready now and for the future with Phoenix Contact.



Find more:

[Complete Cabinet Confidence](#)

Our Product Offering

Power Reliability

The heart of your installation, all control systems are dependent on being properly powered and protected. Surge and circuit protection, UPS backup, and redundant power solutions are the foundation on which reliable control systems should be built.

Connectivity, Switching and Conversion

Never take a good connection for granted, the connection of those wires, the switching and/or isolation of the signals are only as reliable as the quality of the terminations and electronics.

Automation, Networks and Safety

From single components to complete integrated systems, Phoenix Contact provides cost-effective, reliable solutions for Industrial networking, Automation and Safety.

Shopfloor Productivity

Efficiently building a quality control cabinet starts with what you use to build it. A thoughtful selection of products to reduce cost and save time translates directly to the bottom-line profitability of any shop floor.

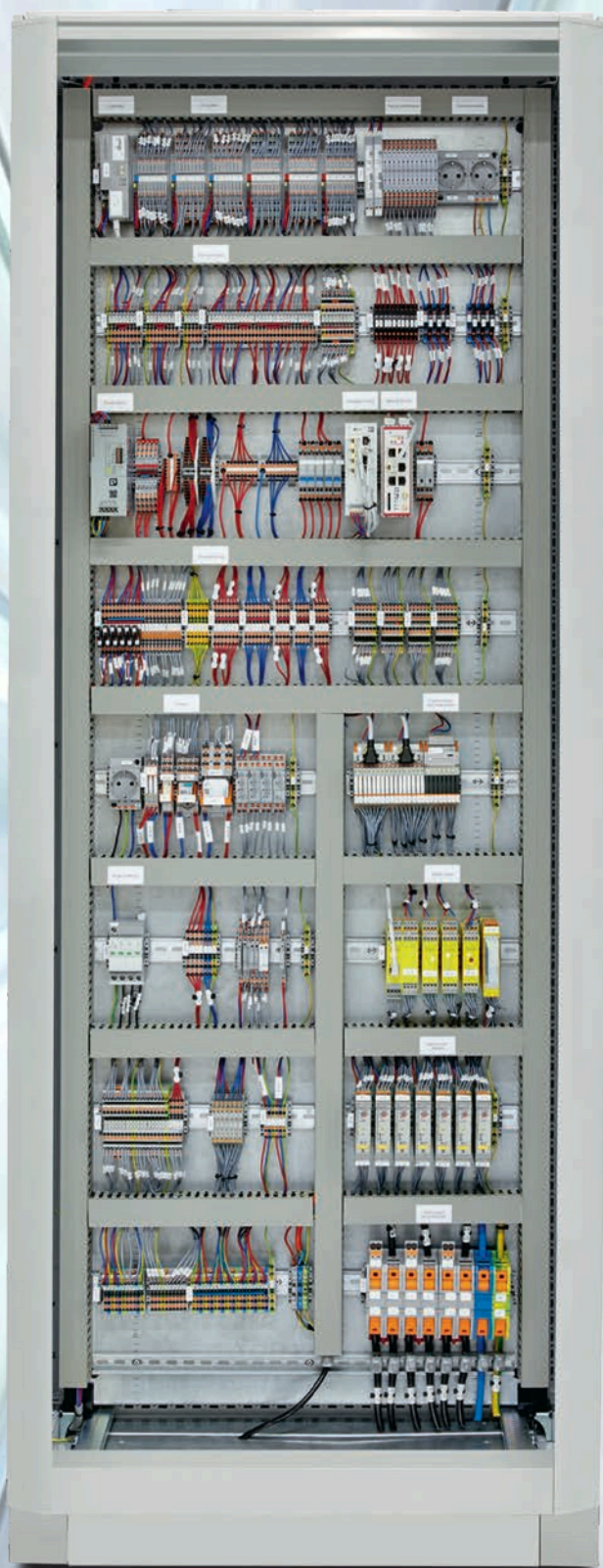
Device Connectors

Discover our wide range of new products for the transmission of signals, data, and power. Reliable and cost effective solutions including Circular Connectors, Data ports, Connectors for Energy Storage and many more.



Find more:

[Our Products Overview](#)



Connect with One of Our Trusted Network Partners



Your Local Connection to Phoenix Contact

At Phoenix Contact, we're proud to introduce our network of authorised partners across Australia. These valued relationships are built on trust, technical expertise, and a shared commitment to delivering exceptional service.

Together with our partners, we're creating stronger connections, locally supported, globally backed.

Our trusted Australian based partner network includes: Colterlec, Remtron, Temtrol Technologies, Dore Electrical, NAW Controls, Engineering Supplies, and Haymans Hendon.

These partners are your direct link to Phoenix Contact's world-class products and support, right where you need them.



Find a distributor:
[Here](#)



Sales Office Locations:

- Newcastle, NSW
- Brisbane, QLD
- Adelaide, SA
- Perth, WA
- Melbourne, VIC
- Wollongong, NSW
- Sydney, NSW

✓ Company Overview:

Colterlec has been delivering quality engineered electrical product solutions to Australian industry for over 25 years across a range of sectors.

✓ Our Mission:

To provide our customers, partners, and suppliers with quality service and solutions that exceed their expectations, every single time.

✓ Years in Business:

Since 1996

✓ Key Markets Served:

- Manufacturing
- Mining
- Food and Beverage
- Packaging
- Transport
- Defense
- Water & Waste Water
- Infrastructure
- Renewables
- Logistics and Warehousing
- Data Centers
- Oil and Gas
- Power



Discover more:
[Colterlec Website](#)

✓ Warehouse Locations:

- Sydney
- Adelaide
- Perth

✓ Geographic Sales Coverage:

National coverage.

✓ Order Fulfillment Capabilities:

- Order Processing - Priority Service
- Same-day Dispatch
- Customer & Stock Safety
- Offering Split Packs

✓ Inhouse Marking Capabilities:

- Wire & Cable
- Terminal
- Equipment

✓ Technical Support Availability:

Available from 7:30am-4:00pm AEST via phone & email.

✓ E-commerce and Digital Capabilities:

[E-shop](#)

✓ Key Points of Contact:

- sales@colterlec.com.au
- 1300 36 26 26



DORE ELECTRICS

INDUSTRIAL ELECTRICAL COMPONENTS

— EST. 1988 —



Sales Office Locations:

- Brisbane, QLD
- Melbourne, VIC

✓ Company Overview:

Since 1988, Dore Electrics has been a trusted supplier of high-quality industrial electrical components in Australia. As a 100% Australian-owned business, we partner with premium global suppliers in power, industrial automation, and control to meet our customers' evolving needs. Our core values include communication, trust, collective responsibility, caring, and pride, which drive our commitment to customer service excellence and long-term partnerships.

✓ Our Mission:

Dore Electrics is dedicated to providing a comprehensive range of industrial product solutions, prioritizing exceptional customer service and consistently aiming to exceed expectations. By partnering with trusted brands, we empower our customers to develop innovative solutions tailored to their needs.

✓ Years in Business:

Since 1988

✓ Key Markets Served:

- Switchboard manufacturers
- Industrial electricians
- Industrial automation and control businesses
- HVAC contractors and companies
- Commercial and industrial businesses
- Electrical wholesalers
- Industrial OEMs
- System integrators

✓ Warehouse Locations:

- Brisbane
- Melbourne

✓ Geographic Sales Coverage:

QLD, NSW, VIC and TAS.

✓ Order Fulfillment Capabilities:

- Order Processing - Priority Service
- Same-day Dispatch
- Offering Split Packs

✓ Technical Support Availability:

Available from 7:30am-5:00pm AEST via phone & email

✓ E-commerce and Digital Capabilities:

[E-shop Dore](#)
[E-shop SwitchesPlus](#)

✓ Key Points of Contact:

- sales@doreelectrics.com.au
- 1300 003 673



Discover more:

[Dore Electric Website](#)
[SwitchesPlus Website](#)



Sales Office Locations:

- Perth, WA

✓ Company Overview:

Engineering Supplies is a proudly Australian, family-owned business with nearly 70 years of experience in the electrical and resource industries. We specialize in low, medium, and high-voltage cable accessories, supporting key sectors across Australia. With a dedicated team of experts, we offer large stock holdings, rapid delivery, and 24/7 technical support. Our commitment to quality and customer-first values makes us a reliable partner.

✓ Our Mission:

Our mission is to be the first supplier of choice in the electrical industry. We deliver exceptional value through reliable supply, outstanding service, and unparalleled technical expertise. By building strong partnerships and exceeding expectations, we support our customers' success and drive industry innovation.

✓ Years in Business:

Since 1955

✓ Key Markets Served:

- Utilities
- Mining
- Industrial
- Commercial
- Automotive
- Marine
- Rail
- Renewables



Discover more:

[Engineering Supplies Website](#)

✓ Warehouse Locations:

- Perth

✓ Geographic Sales Coverage:

Australia

✓ Order Fulfillment Capabilities:

- Order Processing - Priority Service
- Same-day Dispatch
- In-house Local Delivery Service
- After-hours Service
- Customer & Safety Stock
- Offering Split Packs

✓ Inhouse Marking Capabilities:

- Wire & Cable
- Terminal
- Plant
- Equipment
- Aluminum & Stainless Steel

✓ Technical Support Availability:

Available from 8:00am-5:00pm AWST via phone & email.

✓ E-commerce and Digital Capabilities:

[E-shop](#)

✓ Key Points of Contact:

- sales@engsup.com.au
- 08 9258 8444



Sales Office Locations:

- Adelaide, SA

- ✓ **Company Overview:**
Haymans Hendon established in 2011 and have expanded from 4 to 18 staff by offering the best service in SA & across the country.
- ✓ **Our Mission:**
We at Haymans Cabletech Hendon aim to offer the best service & knowledge Australia wide.
- ✓ **Years in Business:**
Since 2011
- ✓ **Key Markets Served:**
Equipment for:
 - Renewables
 - Power Networks
 - Panel / Board Builders
 - Commercial & Demestic Electrical
- ✓ **Warehouse Locations:**
 - Adelaide
- ✓ **Geographic Sales Coverage:**
We are based in SA and often deliver with our own vehicles, however, we also supply anywhere in the country using third-party couriers.
- ✓ **Order Fulfillment Capabilities:**
 - Order Processing - Priority Service
 - Same-day Dispatch
 - In-house Local Delivery Service
 - After-hours Service
 - Offering Split Packs
- ✓ **Inhouse Marking Capabilities:**
 - Wire & Cable
 - Terminal
 - Equipment
- ✓ **E-commerce and Digital Capabilities:**
[E-shop](#)
- ✓ **Key Points of Contact:**
 - simon.generowicz@mmem.com.au
 - 08 8240 0452



Discover more:
[Haymans Hendon Website](#)



Sales Office Locations:

- Melbourne, VIC

✓ Company Overview:

N.A.W. Controls is a 35-year-old company dedicated to servicing the electrical industry with switchgear, power distribution products, and solutions.

✓ Our Mission:

Flexibility and service are our aims.

✓ Years in Business:

Since 1990

✓ Key Markets Served:

- Switchboard Builders
- Panel Builders
- Industrial Contractors
- Commercial Electrical



Discover more:

[NAW Controls Website](#)

✓ Warehouse Locations:

- Melbourne

✓ Geographic Sales Coverage:

5 active field sales representatives covering all of Victoria

✓ Order Fulfillment Capabilities:

- Order Processing - Priority Service
- Same-day Dispatch
- Offering Split Packs

✓ Inhouse Marking Capabilities:

- Wire & Cable
- Terminal
- Equipment

✓ Technical Support Availability:

Available from 7:30am-5:00pm AEST via phone & email.

✓ E-commerce and Digital Capabilities:

[E-shop](#)

✓ Key Points of Contact:

- sales@nawcontrols.com.au
- (03) 9464 6555



Sales Office Locations:

- Melbourne, VIC
- Albury, NSW
- Adelaide, SA
- Gippsland, VIC
- Brisbane QLD
- Townsville, QLD
- Newcastle , NSW
- Geelong, VIC

✓ Company Overview:

Remtron began as an engineering company 40 years ago, serving the plastics and automotive industries. Over the last 30 years, Remtron has transitioned to a sales and marketing company specializing in Automation and Power Quality. We employ engineers and product specialists, serving various industries. We have 8 offices across Australia and stock in all locations.

✓ Our Mission:

To be known as Australia's most trusted automation supplier.

✓ Years in Business:

Since 1985

✓ Key Markets Served:

- Food & Beverage
- Water & Waste Water
- Pharmaceutical
- Mining



Discover more:
[Remtron Website](#)

✓ Warehouse Locations:

- Melbourne
- Adelaide
- Albury
- Newcastle
- Brisbane

✓ Geographic Sales Coverage:

- Brisbane & North Qld
- Sydney, Newcastle, Riverina & Griffith areas
- Melbourne & eastern Victoria
- Adelaide

✓ Order Fulfillment Capabilities:

- Order Processing - Priority Service
- Same-day Dispatch
- Customer & Stock Safety
- Offering Split Packs

✓ Technical Support Availability:

Available from 9:00am-5:00pm AEST via phone & email

Technical Inquiries: techsales@remtron.com.au

✓ E-commerce and Digital Capabilities:

[E-shop](#)

✓ Key Points of Contact:

- sales@remtron.com.au
- (03) 9587 1233



Sales Office Locations:

- Devonport, TAS
- Launceston, TAS
- Georgetown, TAS

✓ Company Overview:

Temtrol Technologies is a wholly Australian family owned and operated business. Experienced Professionals in the Electrical/ Automation/ Instrumentation and Telecommunications fields. Supporting Industry with sales and service for over 25 years. We pride ourselves on exceptional customer service and our flexibility to get the job done effectively and efficiently.

✓ Our Mission:

At Temtrol, we are committed to conducting our business with honesty and integrity. We strive to foster a collaborative and ethical environment, ensuring that every team member contributes to our collective success.

✓ Years in Business:

Since 1998

✓ Key Markets Served:

- Food and Beverage
- Utilities
- Mining
- Mineral Processing
- Aquaculture and Agriculture
- Ship Building
- Pharmaceutical
- Wholesalers
- Switchboard Manufactures
- Machine builders and OEMs
- Pulp and Paper
- Timber
- Viticulture

✓ Warehouse Locations:

- Launceston

✓ Geographic Sales Coverage:

Full-time representation across Tasmania.

✓ Order Fulfillment Capabilities:

- Order Processing - Priority Service
- Same-day Dispatch
- Offering Split Packs

✓ Inhouse Marking Capabilities:

- Wire & Cable
- Terminal
- Equipment

✓ Technical Support Availability:

Available from 7:30am-4:30pm AEST via phone & email

✓ E-commerce and Digital Capabilities:

E-shop: Coming soon

✓ Key Points of Contact:

- sales@temtrol.com.au
- 03 6380 2400



Discover more:

[Temtrol Technologies Website](https://www.temtrol.com.au)

Ongoing communication with customers and partners worldwide

Phoenix Contact is a global, market leader based in Germany. Our group is known for its future-oriented components, systems, and solutions in the fields of electrical engineering, electronics, and automation.

With a global network reaching across more than 100 countries and 22,000 employees, we can stay in close contact with our customers, something we believe is essential to success. The wide variety of our innovative products makes it easy for our customers to find future-oriented solutions for multiple applications and industries. We especially focus on the fields of energy, infrastructure, process, and factory automation.



You will find our complete product range at:
www.phoenixcontact.com.au

PHOENIX CONTACT Pty. Ltd.

CONTACT US

Technical Support number: 1300 786 411
 Fax: 1300 723 399
 E-mail: customerservice@phoenixcontact.com.au
 Website: www.phoenixcontact.com.au

OUR LOCATIONS

SYDNEY

Head Office
 Level 12, 1 Parramatta Square,
 Parramatta NSW 2150

ADELAIDE

12B Main Assembly Bldg,
 Tonsley Park 1284 South Road,
 TONSLEY SA 5042

BRISBANE

Unit 9, 56 Lavarack Avenue
 EAGLE FARM QLD 4009

SYDNEY

Distribution Center
 2 Interchange Drive, Eastern
 Creek NSW 2766

MELBOURNE

Unit 1 8-12 Butler Way
 TULLAMARINE VIC 3043

PERTH

Unit 5, 175 Campbell Street
 BELMONT WA 6104

TASMANIA

Hobart - Launceston - Devonport



LIFETIME WARRANTY

BUILD WITH CONFIDENCE



PRICE GUARANTEE

BUILD WITH CONFIDENCE



AVAILABILITY GUARANTEE

BUILD WITH CONFIDENCE



E-PLATFORM

BUILD WITH CONFIDENCE



INDUSTRY 4.0

BUILD WITH CONFIDENCE