



# The All Electric Society Park

Tomorrow's sustainable world,  
today's technologies



# Exciting answers to burning questions about the future

**How reliable are renewable energy sources? Where do we get energy from when the sun is not shining and the wind is not blowing? What are the different ways to charge an electric car? And how does green electricity actually get into the car, a building, or production?**

Answers to these and many other exciting questions can be found in the All Electric Society Park at Phoenix Contact's premises in Blomberg, Germany. It is here that the energy transition is truly brought to life. The park uses real-life use cases to demonstrate the many ways in which renewable energy can be generated, converted, stored, distributed, and optimally used – and how all of this is interconnected.

## **Inspiring ideas for the energy transition**

As an outdoor public exhibit, the park brings to life the grand vision of the All Electric Society on a small scale. It showcases existing technical possibilities and how they can be used to solve the challenges of tomorrow. Here, people of all ages, from kindergarten children to senior citizens, from technology fans to complete novices, can immerse themselves in the exciting world of renewable energy – without needing any prior knowledge.

# 12 m

is the diameter of the  
large solar tracker





## An interactive and fun experience

Complex topics are explained comprehensibly. The Information is provided so intuitively that visitors can move through the park independently:

- Glass cubes allow interactive exploration of technologies and solutions for the energy transition
- Topic champions explain their backgrounds in videos
- A 3D view of the park shows the various energy flows
- Across the site, further information can be accessed via QR codes

The focal point of the park is the All Electric Society Pavilion, which provides a 360° view of the entire site. 60% of the building materials used follow the cradle-to-cradle principle. This means that they consist of recyclable materials that can either be returned to biological cycles or reused in technical cycles.

The park underlines our mission: Empowering the All Electric Society – together, we are creating a sustainable world based on our passion for technology and innovation.

# 550

solar panels provide renewable energy

# 7,860

square meters of floor area showcase the All Electric Society

# 7

kilometers of power cables distribute the sustainable energy

# 12

kilometers of data cables transmit information

There are only a handful of walk-in wind turbine nacelles in Germany – one of them is at the All Electric Society Park. Its dimensions: 3.5 x 3.8 x 6.5 meters



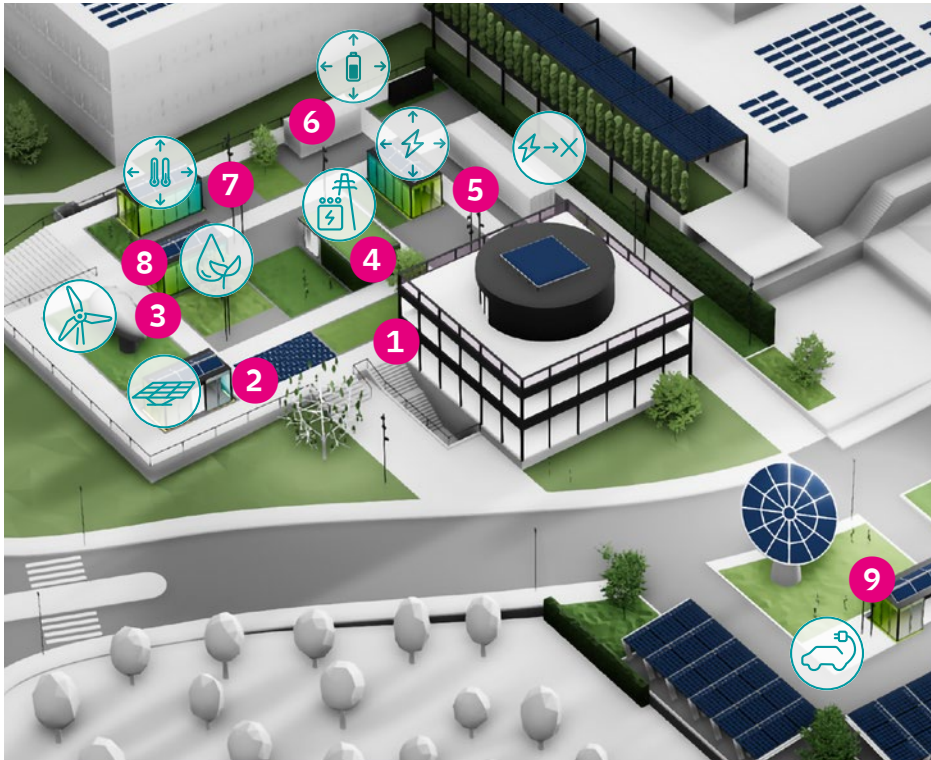
### Useful information for your visit

- Free entry
- Open daily from 7 a.m. to 9 p.m.
- Ample parking for cars and bicycles
- E-charging stations available
- Can be reached by bus (route 732) from Bad Pyrmont and Lemgo

**Address:**  
**Flachsmarktstraße 8**  
**32825 Blomberg, Germany**



# The best way through the All Electric Society Park




1 The All Electric Society Pavilion

2  Solar power

3  Wind power

4  Secondary substation

5  Electrical power distribution

6  Energy conversion to hydrogen

7  The battery storage system

8  Thermal power distribution

9  Water and environmental solutions

10  E-mobility

## Legal notice:

Phoenix Contact GmbH & Co. KG  
Flachsmarktstraße 8  
32825 Blomberg, Germany

Phone: +49 (0) 5235 3-00  
Fax: +49 (0) 5235 3-41200  
Email: [info@phoenixcontact.com](mailto:info@phoenixcontact.com)

Legally responsible for content: Eva von der Weppen



[phoenixcontact.com/aespark](https://phoenixcontact.com/aespark)  
#aespark