



MINT Certificates

1.2

EN

Table of Contents

1	Master Slave certificate	4
2	Datahub Certificate.....	6

Table of Figures

Figure 1: Adding trust store.....	4
Figure 2: Adding the certificate.	4
Figure 3: Adding a keystore.....	5
Figure 4: Adding the SSL certificate.	5
Figure 5: Adding the MQTT certificate.....	6

Table of Revisions

Date	Version	Description of Changes	Status	Author
16-01-2025	1.2	Template rework	Release	Frederik Leempoels

1 Master Slave certificate

For the Mint secure connection to work you also need SSL certificates, these certificates can be obtained by contacting Phoenix Contact support. For installing these certificates follow the following steps. Log in to the WBM, go to Security > Certificate Authentication. In the trust store, click on the "+" icon on the bottom left of the table. A window should pop up where you have to give a name to the new trust store. This name should be "MintSecure-Server" this is important. In the new "MintSecureServer" trust store click on the "+" icon.

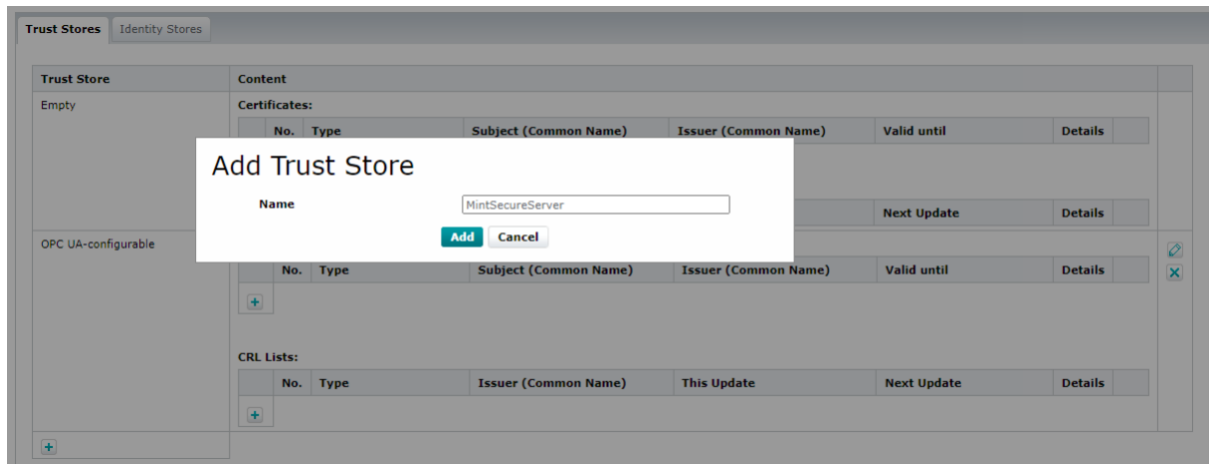


Figure 1: Adding trust store.

under the certificates section. In this window you should browse to the certificate you've generated and add it in the store. Once added you should see the certificate in the trust

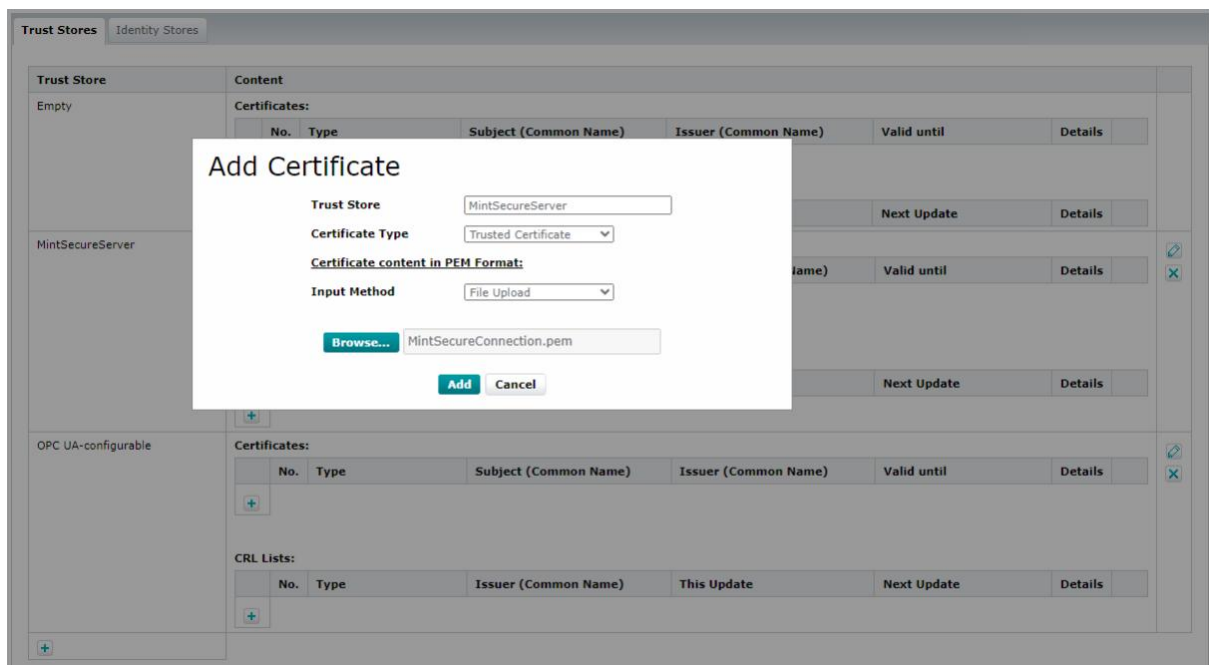


Figure 2: Adding the certificate.

store with it's expiration date. Next up go to the "Identity store" tab and klick on the "+" icon

on the bottom left. In the window that opens add the name "MintSecureClient" (This is important !) and browse to the certificate you've made earlier. After this is finished, you should see the key pair in the store, now you have to add the certificate to this key. you can do this by clicking on the pencil icon on the bottom right. After this a window opens.






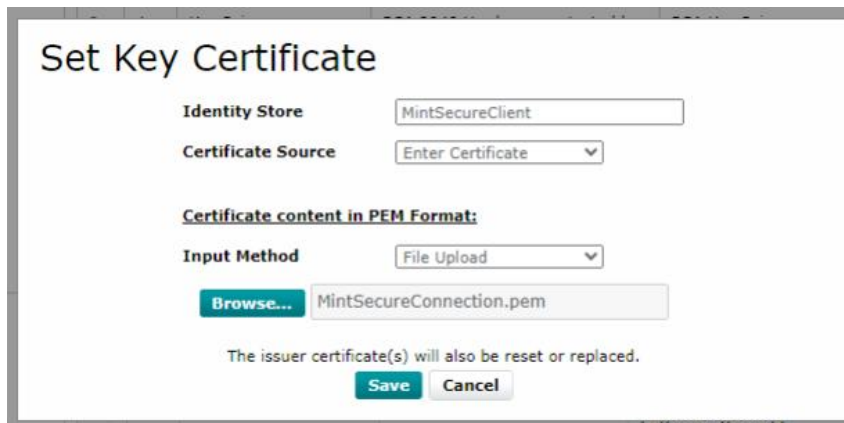
MintSecureClient		No.	Element	Type	Description	Details	
		1	Key Pair	RSA 2048	RSA Key Pair		
		2	Certificate	Key Certificate	Certificate not available. Please add a Key Certificate via the "Set" button on the right.		

Figure 3: Adding a keystore.

where you once again have to browse to the certificate you've made and save it.



Set Key Certificate

Identity Store:

Certificate Source:

Certificate content in PEM Format:

Input Method:

Browse...

The issuer certificate(s) will also be reset or replaced.

Save **Cancel**

Figure 4: Adding the SSL certificate.

After this is finished you are done setting up the certificates. All that is left now is to set up an NTP connection to a NTP server to make sure that the PLC time is synchronised.

2 Datahub Certificate

Request the latest MQTT certificate from your Phoenix Contact, contact person. Import the certificate into the PLC memory using a FTP tool (WinSCP is preferred). Log in using the user and password of the PLC. Drag an drop the certificate into the main folder. The MQTT SSL certificate is set up now.

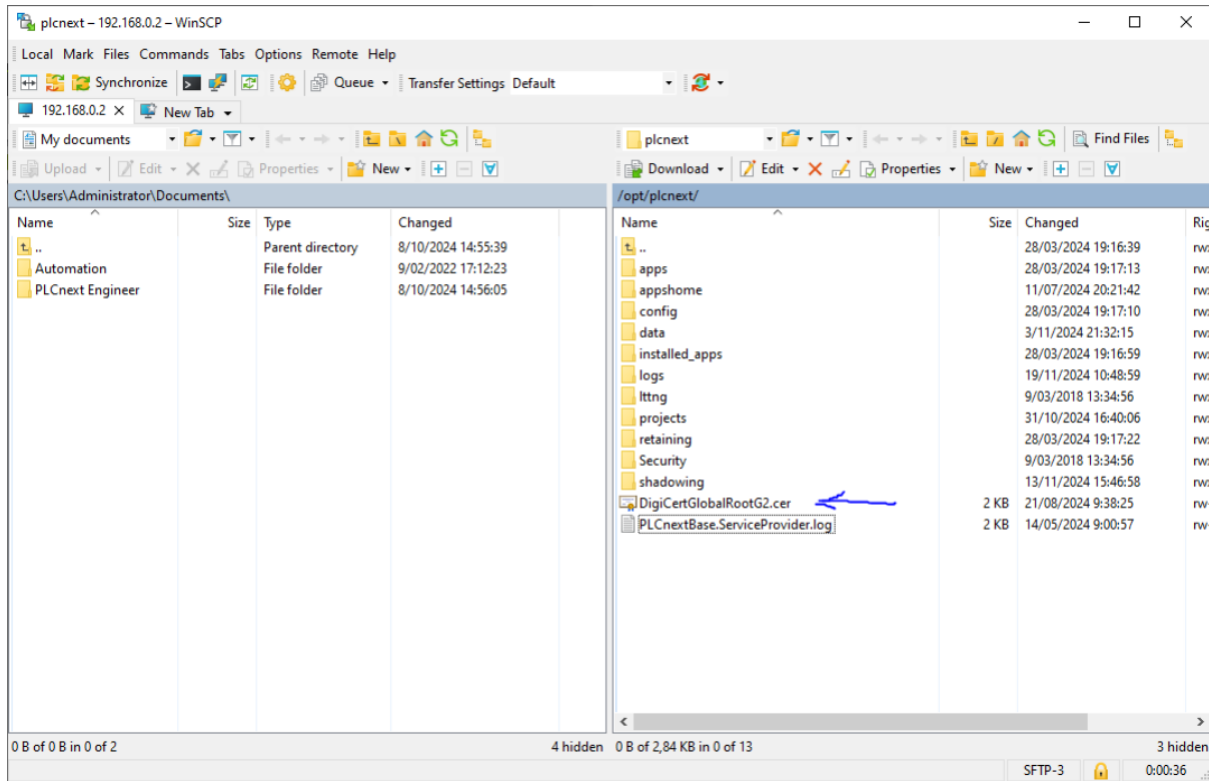


Figure 5: Adding the MQTT certificate.