



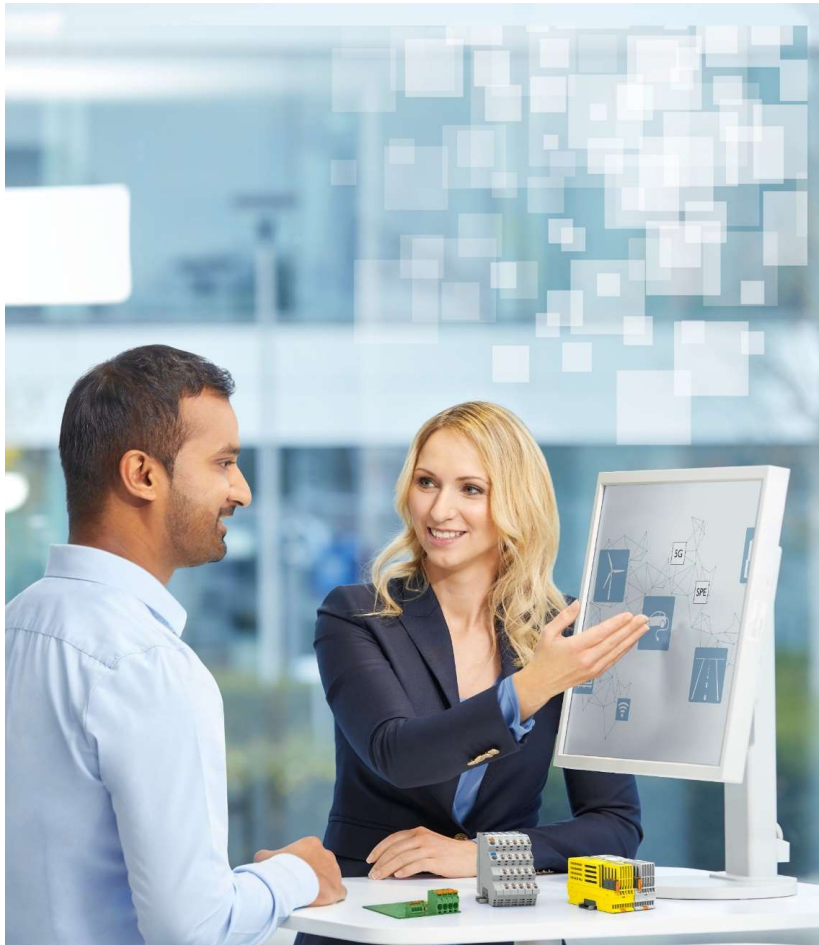
Welcome

Nuevos Productos 2021

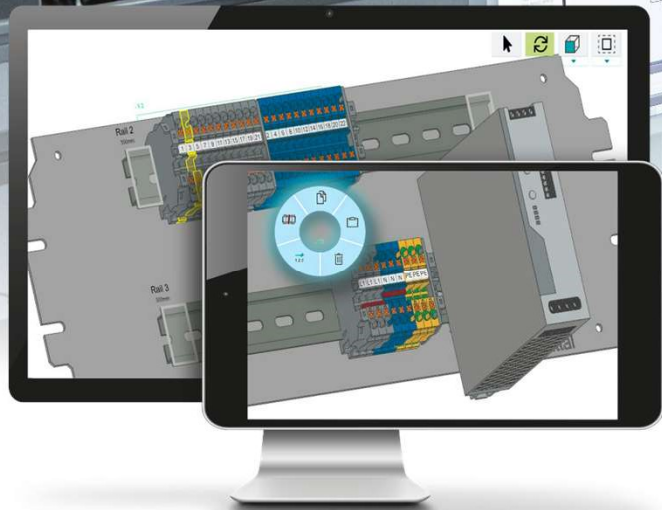


New Products 2021

Main new products 2021



clipx ENGINEER – Engineering Software



New Products 2021

clipx ENGINEER – Engineering Software

Applications

Plan and procure individual components, complete terminal strips, assembled mounting plates, and junction boxes more efficiently than ever, and to seamlessly transfer the data to production.

Maximum availability

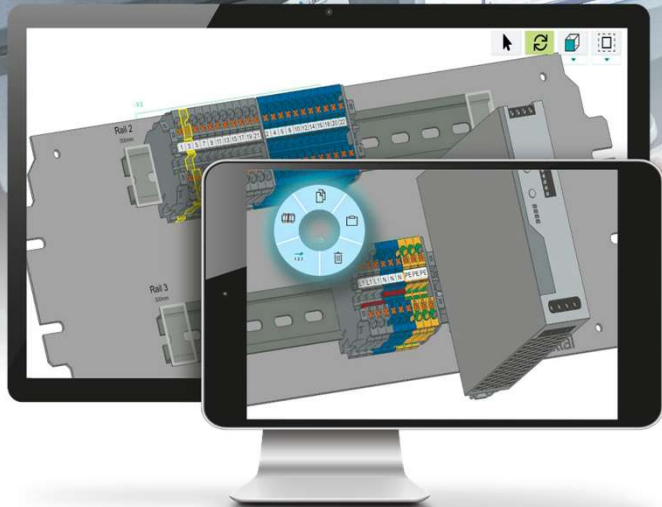
Plan your terminal strips, mounting plates, and junction boxes with mobility at any location – thanks to the online and offline application.

Smart interfaces

Use smart interfaces to our applications for control cabinet manufacturing and in your CAE programs.

Simplified planning

Simplify your planning processes with the help of intelligent engineering assistants.



New Products 2021

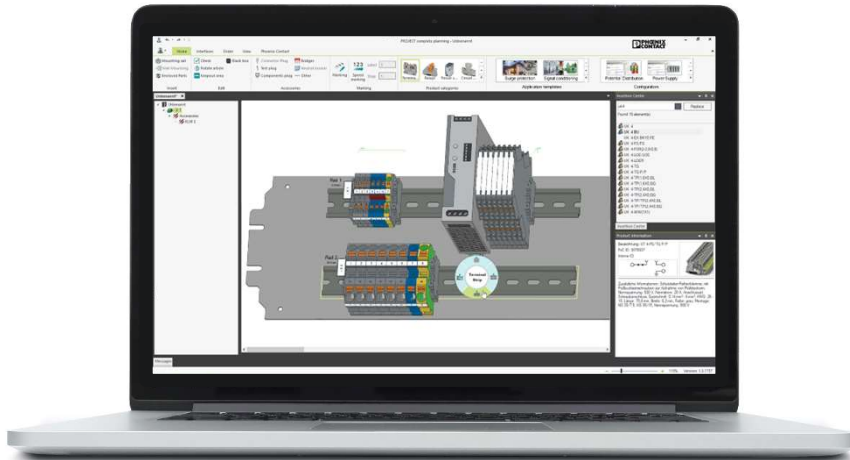
clipx ENGINEER: Range of functions

- Web solution
- 3D Engineering
- Project management: History/Versioning/Sharing
- Integration of PTFIX configurator
- Online shop interface
- Functional Engineering -first solutions-
- Cloudsolution / Project store
- Integration of MARKING editor 2.0



New Products 2021

clipx ENGINEER



Maximum Modularity

- Web and Desktop version available
- Support of the engineering workflow in an early phase with functional engineering
- Support of many application domains

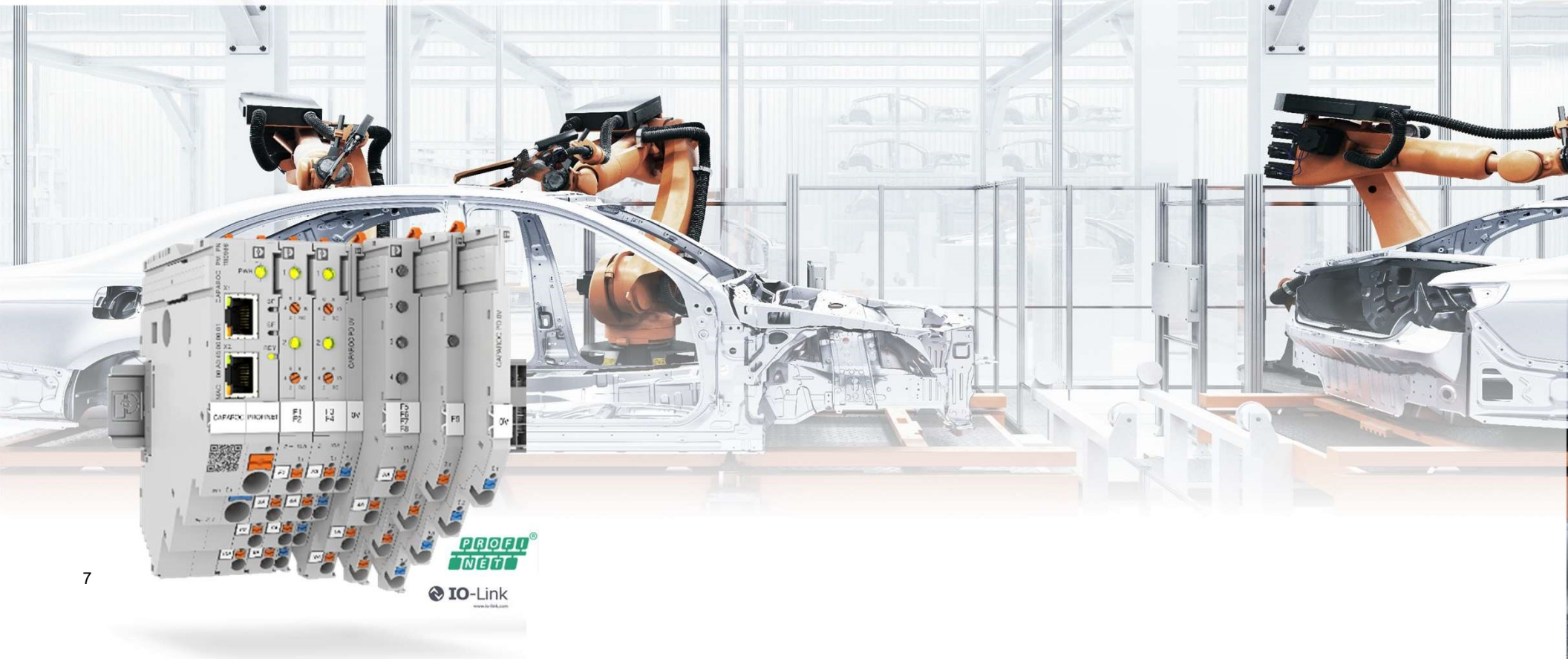
Intelligent Interfaces

- Bi-directional interfaces to all relevant CAE systems
- Integration of Phoenix Contact product configurators
- Constantly up-to-date data for manual and automated production processes

Progressive Process Support

- Online ordering with instant pricing and delivery date information
- 48h Fastlane terminal strip assembly
- Template library for functional engineering
- Data creation for third-party articles

CAPAROC – Electronic Circuit Breaker System



New Products 2021

CAPAROC – Electronic Circuit Breaker System

Applications

Protection against overload and short-circuit current, transparency of the status of the machine and start of capacitive loads.

Customizable standard

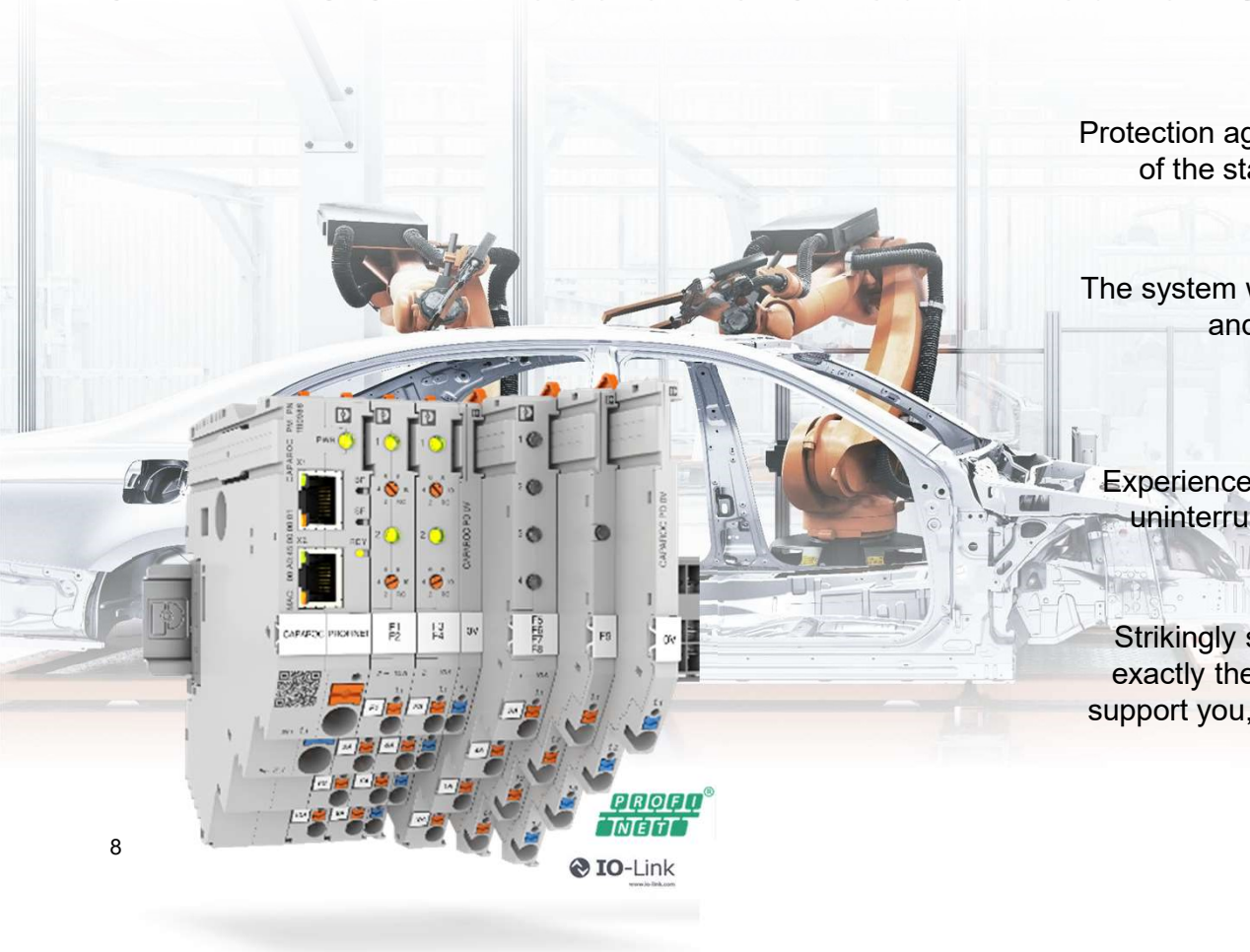
The system with a future: With a wide range of individual modules and many combination options, you can create your customized solution.

Easy operation

Experience particularly easy operation with tool-free assembly, uninterrupted installation and transparent operating status.

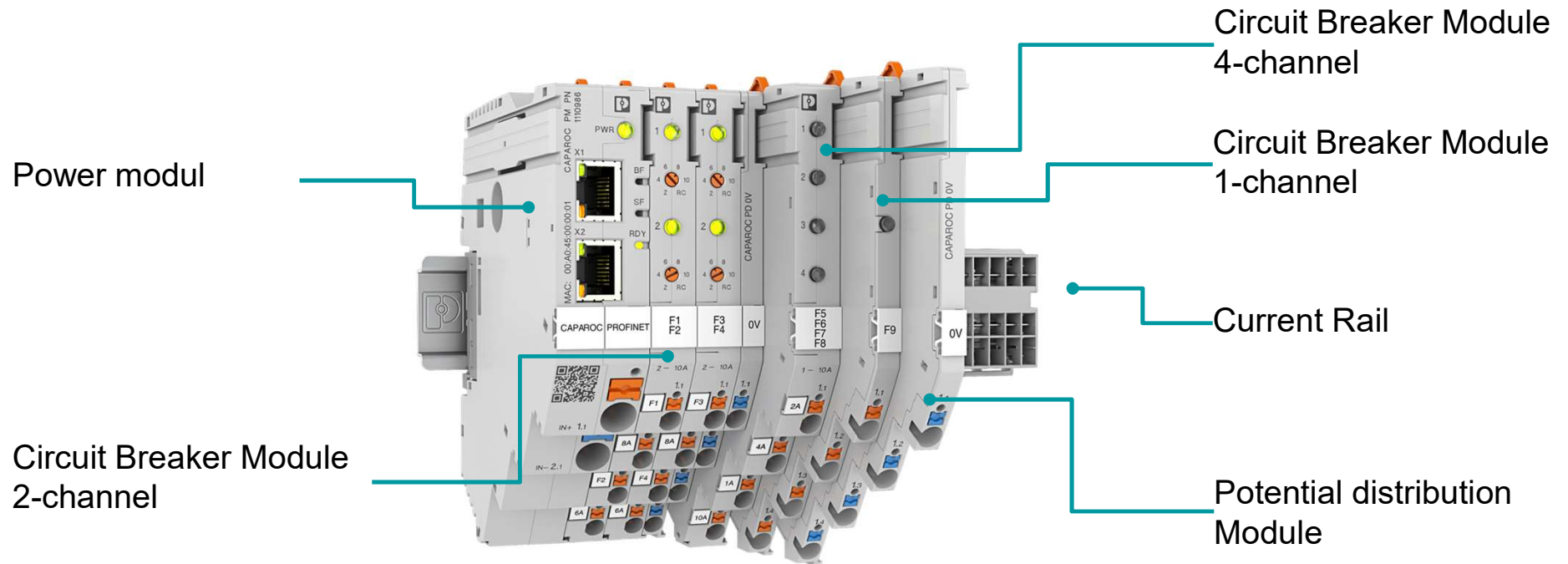
Intuitive design-in

Strikingly simple: The online configurator helps you to design exactly the system that you need. Appropriate digital services support you, for example with all your individual digital data.



New Products 2021

CAPAROC: Structure of the system

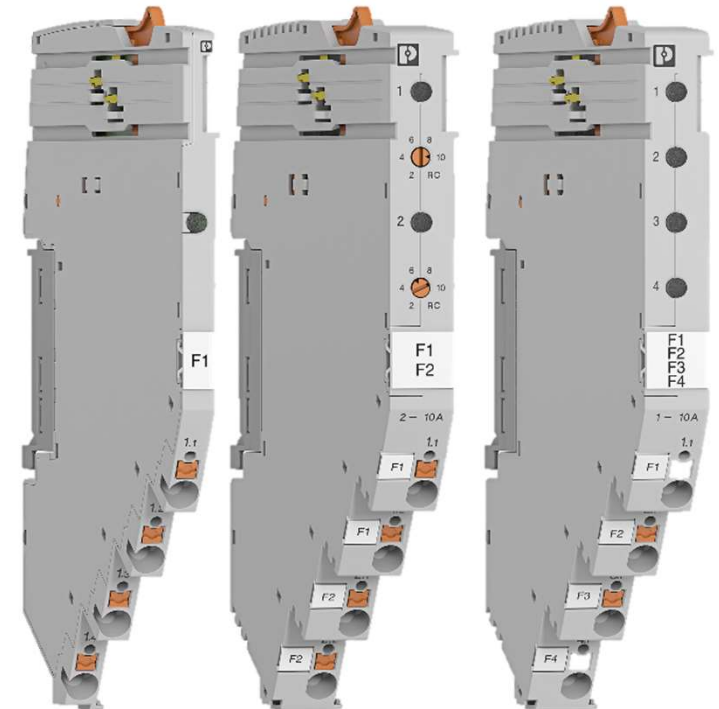


CAPAROC

The customizable standard

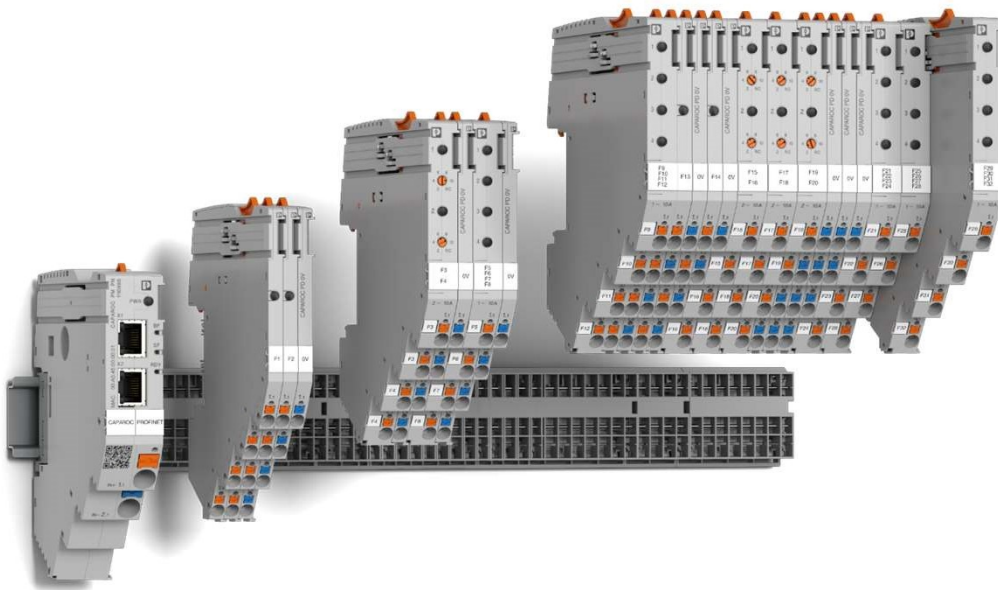
1-, 2- and 4-channel circuit breaker modules for maximum modularity

- Protect channel accuracy with up to four potential distribution terminals directly on the module
- Set in 1 A steps up to 10 A via the one-button operation or conveniently via the current step-switch from 2 - 10 A, or simply set it remotely
- Space-saving protection on 3mm with the 4-channel circuit breaker module
- With or without current limitation suitable for any application

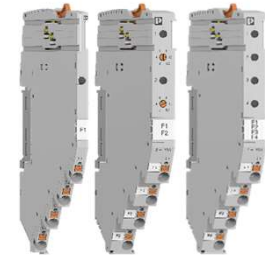


New Products 2021

CAPAROC: Product range



Power Module
Status, Reset, I>80%
Profinet interface



Circuit Breaker Module
1-, 2-, or 3-channel



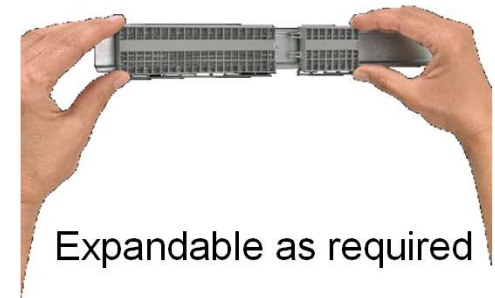
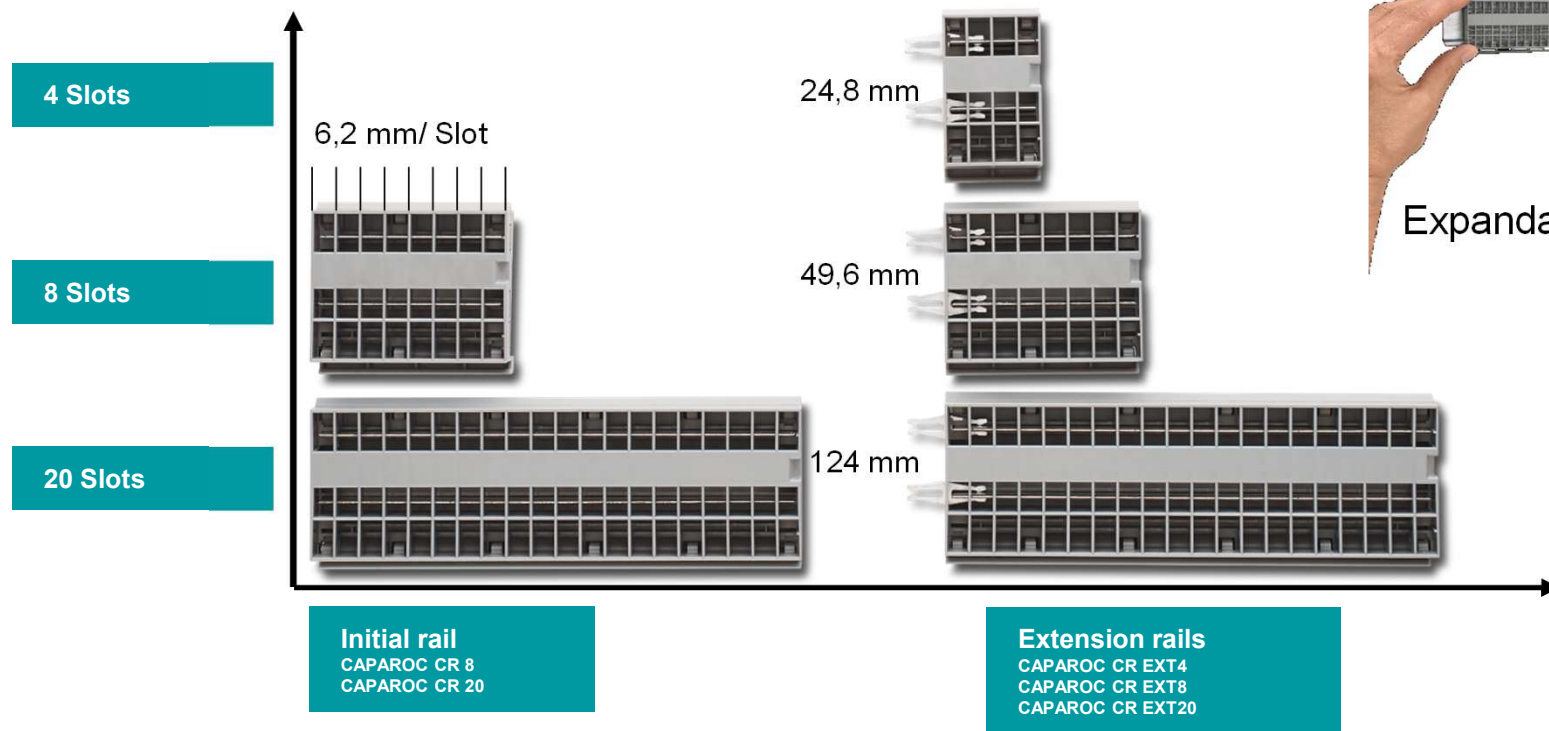
Potential distribution module
4-fold 0V distribution



Current rails
Initial Current Rail (8- or 20-slots)
Extension Current Rail (4, 8, or 20 slots)

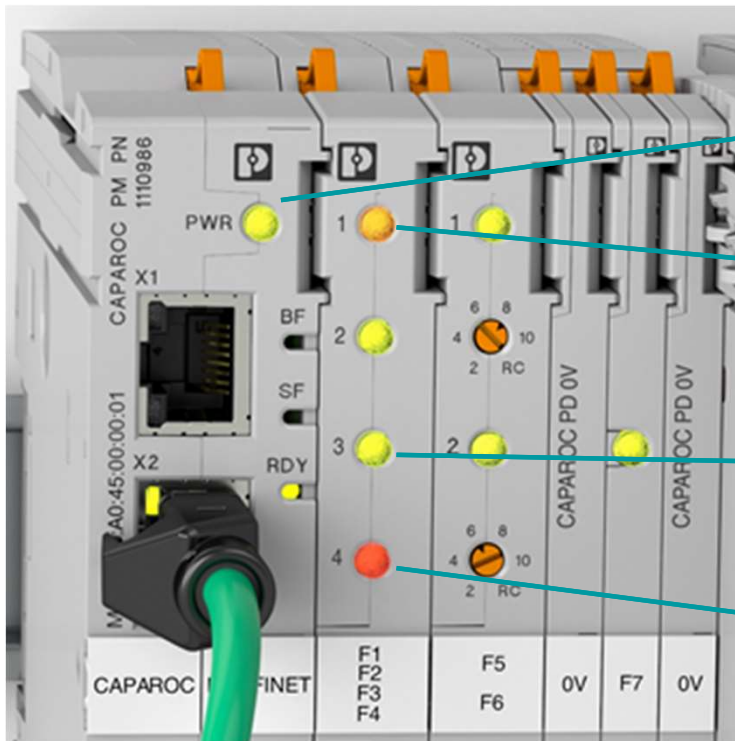
CAPAROC - Circuit Breaker System

CAPAROC current rail variants



CAPAROC

Easy operation



Operating voltage of the system

Channel current over 80%

Channel switched on

Channel tripped after a failure

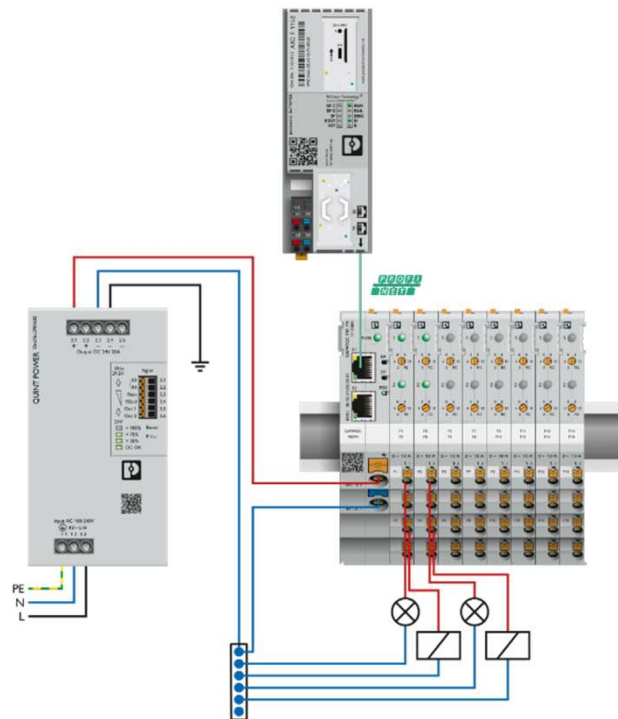
Electronic Circuit Breakers

Circuit Breaker Portfolio



CAPAROC – Topology

Application comfortable adjustment via Profinet



PROFI
NET



COMPLETE line - The complete solution for control cabinet construction

Power Reliability

Protect \longrightarrow Monitor \longrightarrow Supply \longrightarrow Secure \longrightarrow Distribute



New Products 2021

CAPAROC



The customizable standard

- Wide range of combination options for every application
- Future-proof modular system
- Minimum space requirement (3mm per channel)

Simple operation for everyone

- Intuitive configurator for easy system configuration
- Toolless construction
- Uninterrupted exchange of modules during operation
- Transparent operating status

Strikingly simple design-in

- Comprehensive support from selection to digital services
- Individually configured systems permanently have a unique article number
- Continuous planning (interoperability) incl. power supplies



CAPAROC potential distribution
PHOENIX CONTACT

CAPAROC

EMMA – Energy Management Service for EMpro



New Products 2021

EMMA – Energy Management Service for EMpro



Applications

Cloud solution for monitoring, analysis and evaluation of energy and power data

High-level user-friendliness

High-level user-friendliness with a systemic overall concept with intuitive menu navigation and automated data transfer to the Proficloud.

Targeted overview

Access your energy and performance data anywhere in the world at any time. Purpose-oriented visualizations provide you with an targeted overview.

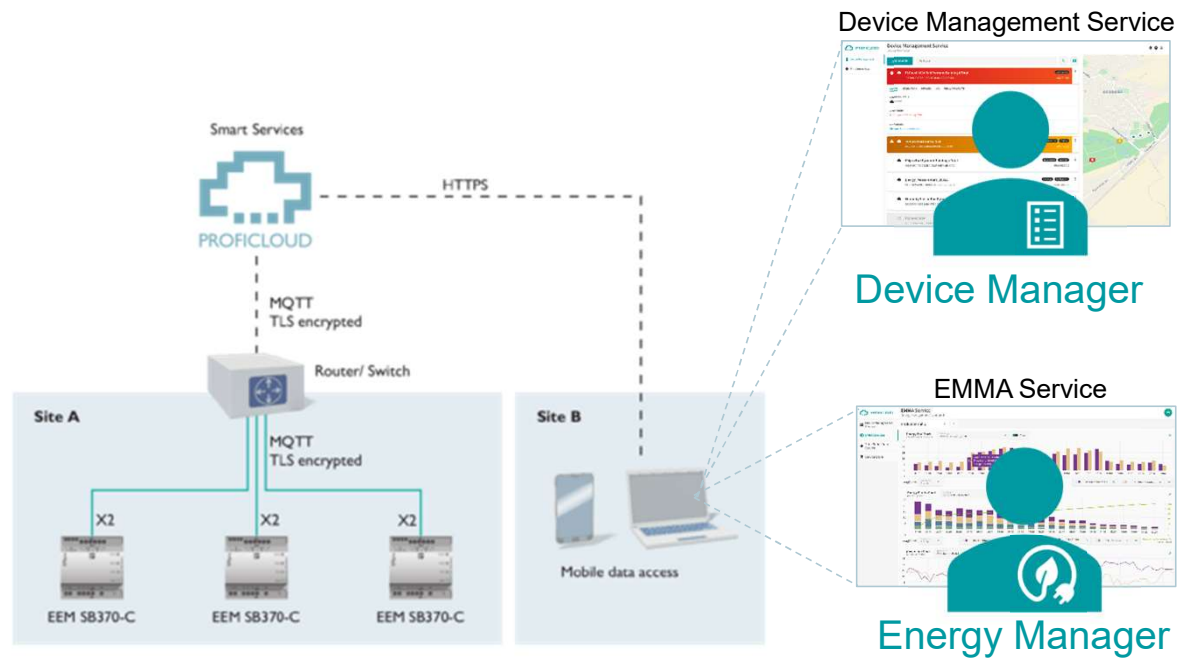
Continued further development

Constantly increasing value benefits for your energy management system with continuous, user-oriented further development.

New Products 2021

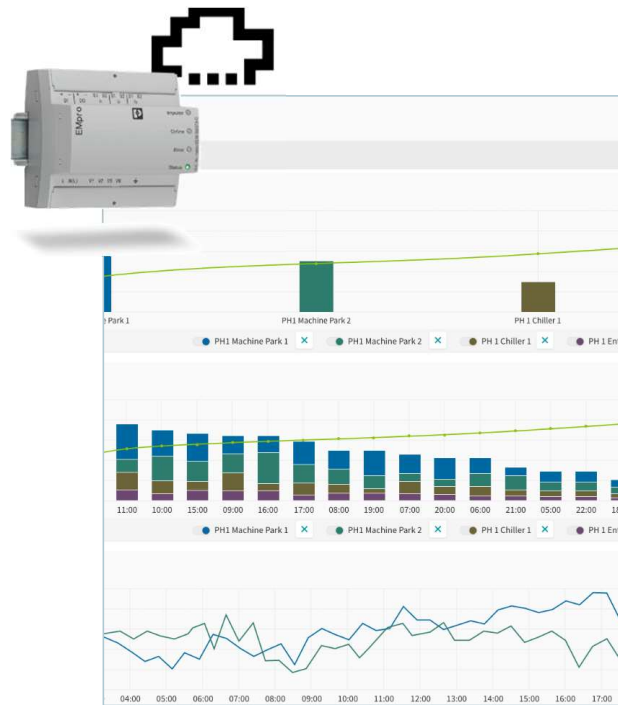
EMMA: Core Functionalities

- Feature set of 8 visualisation options
- Flexible range of functions in the field of energy data visualization
- Dynamic updating of widgets
- Highly intuitive user-guidance



New Products 2021

EMMA



High Usability

- Direct connection to the cloud without gateway
- Device management for best application overview
- Dedicated functionality for energy managers

Full data access

- Access from anywhere anytime with online connection
- Scalable IT infrastructure

Secure data handling

- Direct connection with secure TLS encryption
- IoT established MQTT protocol

CONTACTRON Speed Starter



New Products 2021

CONTACTRON Speed Starter

Applications

Speed starters for asynchronous motors start motors softly in machinery and plant engineering, especially in the field of intralogistics and materials handling.

Fast commissioning

Thanks to the simple operator interface consisting of a rotary switch, three buttons, and a display, all necessary settings can be made intuitively.

Safe shutdown

Safe two-channel shutdown up to SILCL 3 in accordance with IEC 62061, with integrated Safe Torque Off function.

Cost-effective solution

Cost-effective solution that focuses on all the functions necessary for different speeds and soft start.

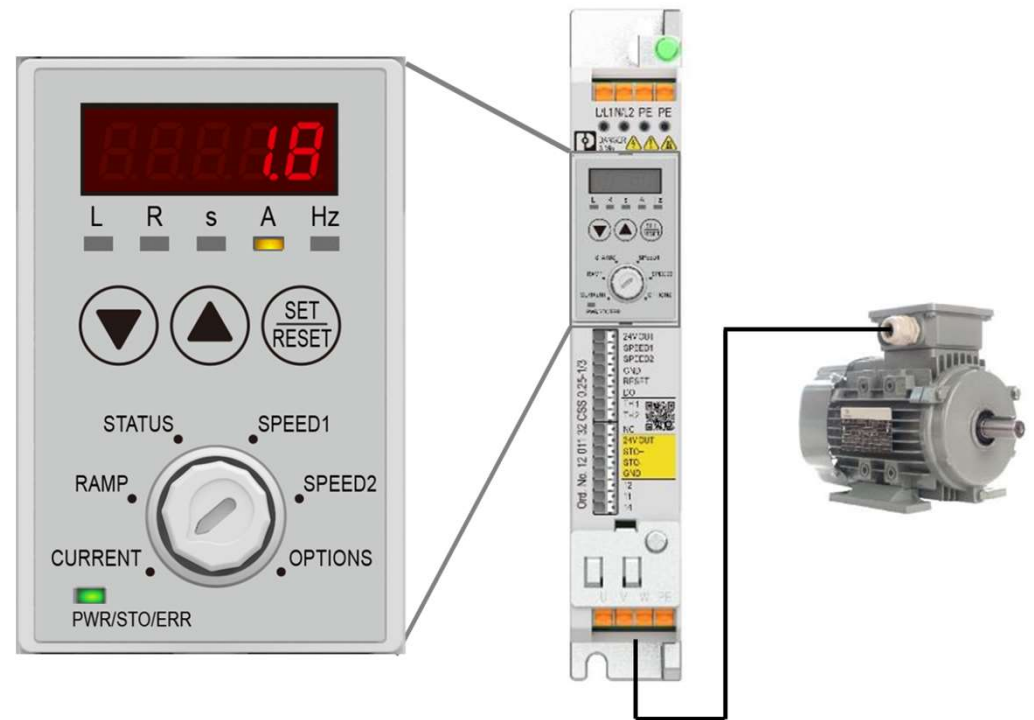


New Products 2021

CONTACTRON Speed Starter: Handling



The easiest handling concept in the market.



New Products 2021

CONTACTRON Speed Starter: Product range



1-phase without EMC filter
0,25 kW, 0,37 kW, 0,55 kW,
0,75 kW or 1,5 kW



1-phase with EMC filter
0,25 kW, 0,37 kW, 0,55 kW,
0,75 kW or 1,5 kW



3-phase without EMC filter
0,25 kW, 0,37 kW, 0,55 kW,
0,75 kW or 1,5 kW



3-phase with EMC filter
0,25 kW, 0,37 kW, 0,55 kW,
0,75 kW or 1,5 kW



CONTACTRON-Speed-Starter

PHOENIX CONTACT

New Products 2021

CONTACTRON Speed Starter



Easy to use

- Fast handling
- Fast installation due to PT connection

Safety integrated

- Unique in this device class
- No additional contactor necessary

Smallest device on the market

- Space saving in the cabinet
- Cost saving

IPD – Installation Power Distribution



New Products 2021

IPD – Installation Power Distribution

Applications

Connector system for indoor and outdoor applications with high IP protection for power distribution to the consumer, both indoors and outdoors

Time-saving installation

The Push-Lock connection of the connectors allows the easy, time-saving installation of flexible and rigid conductors. The terminal points are opened and closed easily using the lever.

Easy device connection

IPD panel feed-throughs with Push-in connection allow tool-free assembly with the direct connection of pretreated and rigid conductors. The pusher can be used to release already-installed conductors or to connect conductors without ferrules.

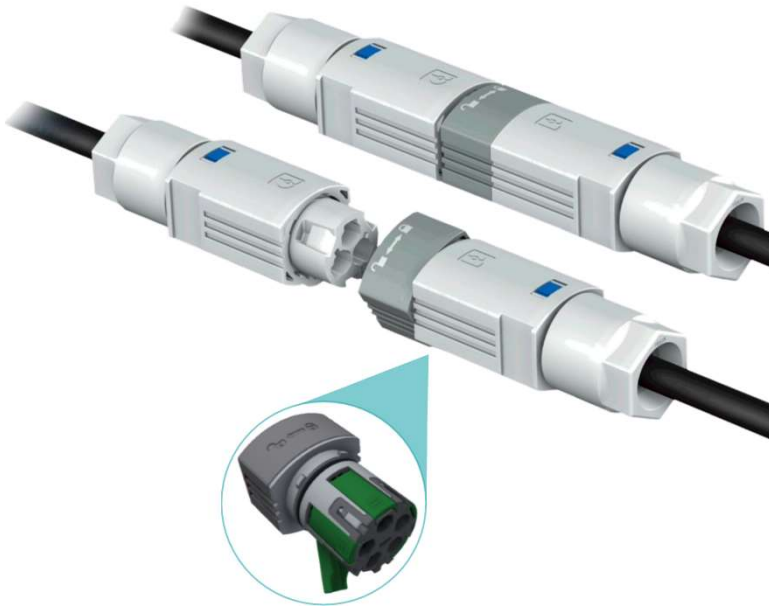
Secure locking

To allow you to work conveniently, even under adverse conditions, the IPD connectors are equipped with a fast locking system. The plugs latch clearly and securely into place and provide reliable protection against mismatching.



New Products 2021

IPD: Product range





Connectors for lighting PHOENIX CONTACT

New Products 2021

IPD



Easy connection

- Easy pluggable connectors with Push-in connection
- Made for Infrastructure market
- Complete³: Complete System - Complete pluggable - Complete toolless

Planning and Visualization

- Future: Software for electrical installations to generate installation drafts as well as parts and price lists.

CAE Integrated

- Future: Integration in leading CAE technologies and platforms e.g. ZUKEN

M12 PUSH-PULL



New Products 2021

M12 Push-Pull

Applications

Especially for confined spaces and high cabling density, e.g. in factory automation, M12 Push-Pull offers significant assembly advantages due to fast plugging and unplugging of the components.

Plug and Produce

With the M12 push-pull locking system, plugging is now reliable and convenient – even in confined spaces. You will reduce installation times by up to 80% compared to screw connections.

Flexibility through compatibility

M12 push-pull flush-type connectors are plug-compatible with the established M12 screw connectors and the push-pull locking systems of other manufacturers.

More compact designs

The new M12 push-pull concept with countersunk M12 ports allows flush integration into the housing. This lets you design more compact devices due to the higher packing density.



New Products 2021

M12 Push-Pull



time saving



compatible



compact



flying leads



future proof

... the new standard in automation technology !



M12 push-pull connectors PHOENIX CONTACT

New Products 2021

M12 Push-Pull



Plug-and-Connect

- Convenient fast and secure connecting
- Connector skips back when not snapped correctly

Safely shielded

- Reliable shield connection even under extreme mechanical strain thanks to the innovative spring concept

One Standard – One Connection

- Manufacturer-independent M12 push-pull locking system supported by the main user consortium PNO & AIDA

CHARX – Everything for Your E-Mobility Charging Infrastructure



New Products 2021

CHARX – Everything for Your E-Mobility Charging Infrastructure

Applications

Private, commercial and public charging of electric vehicles, e.g. homes, hotels, shops, restaurants, companies, fleets, towns, parking lots, parking garages, service stations and rest areas

Target Industries

Charging infrastructure, building technology, transportation infrastructure, electronic devices, power transmission and distribution, automotive industry

Target Groups

Manufacturers, planners, system integrators and operators of AC and/or DC charging infrastructure

Target Regions

Americas, Europe, Asia



CHARXconnect[®]



CHARXcontrol[®]



CHARXmanage[®]



CHARXpower[®]



CHARXprotect[®]



CHARXcontact[®]

New Products 2021

DC power electronics for fast charging stations



Fast installation and maintenance

- 19" standard dimensions as well as Push-Lock and T-LOX quick connection technology

Cost and space saving

- Efficient, space-saving operation due to high efficiency, high power density and innovative design

Flexibility

- Scalable charging power through flexible interconnection of modules
- Flexible design of charging systems thanks to galvanic isolation

New Products 2021

Surge protection for charging stations



Availability

- High system availability due to powerful protection circuitry

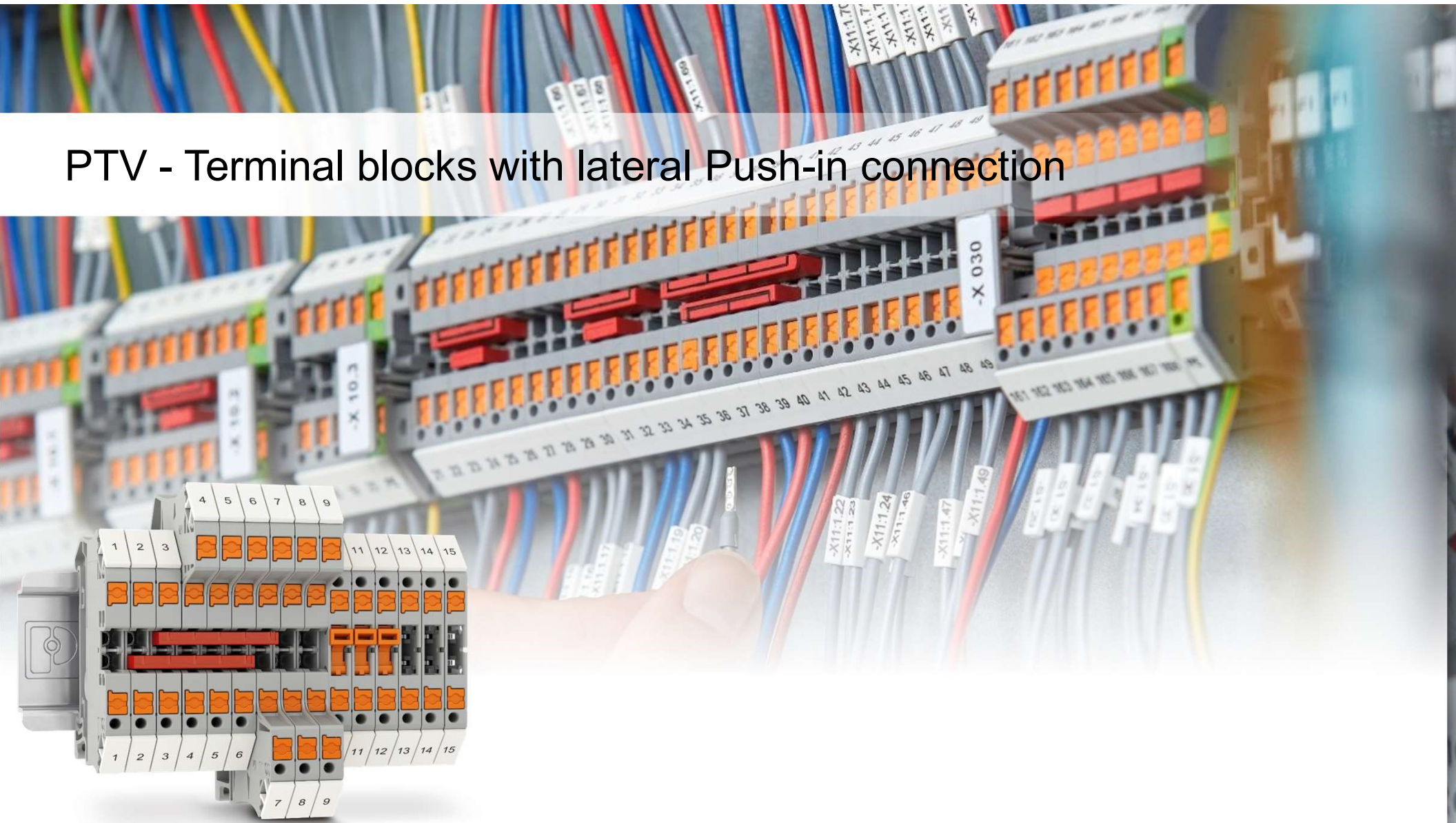
Reliability

- Uninterrupted continuation of the charging process due to protected power supply
- Additional protection of the connected electric vehicle

Easy handling

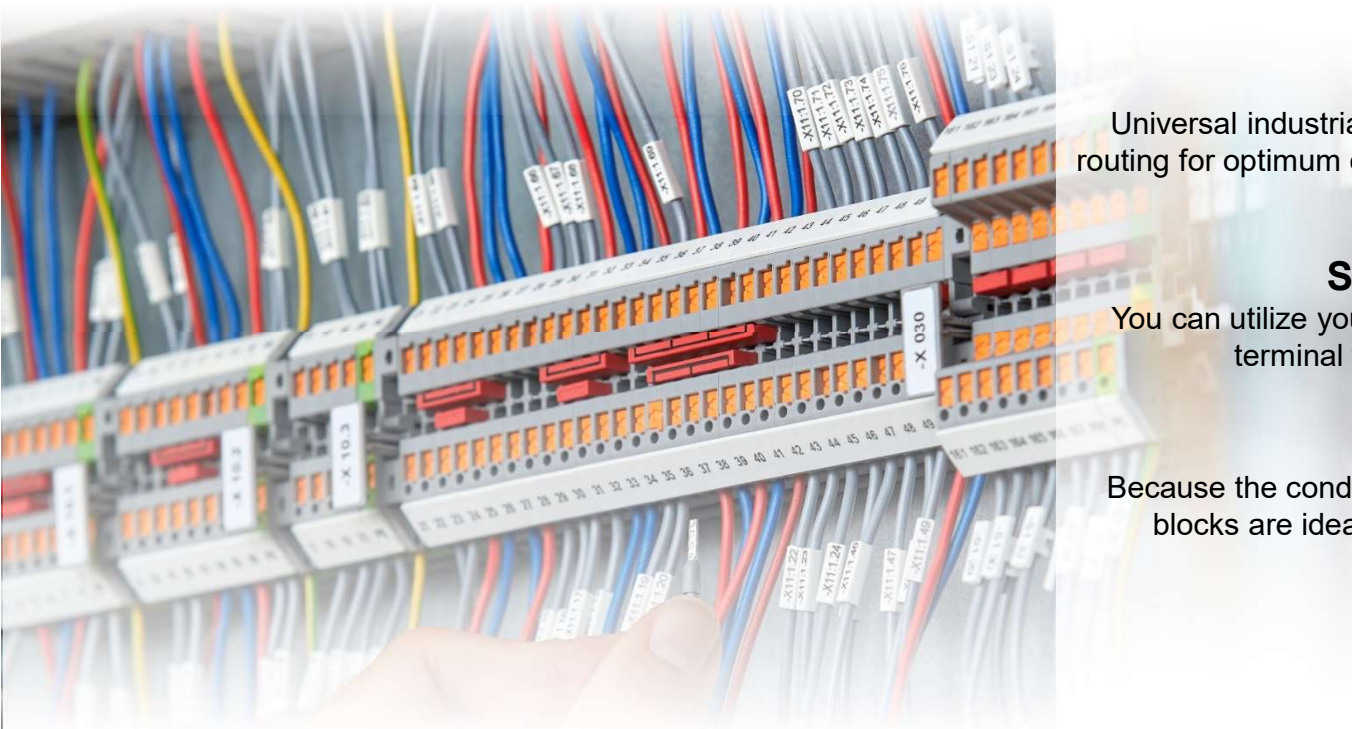
- Easy insulation measurement and simple replacement during servicing with consistently pluggable protective devices
- No mismatching of plugs, thanks to mechanical coding

PTV - Terminal blocks with lateral Push-in connection



New Products 2021

PTV – Terminal blocks with lateral Push-in connection



Application

Universal industrial control cabinet wiring with lateral conductor routing for optimum clarity. Retrofit projects, applications with limited wiring space.

System modernization

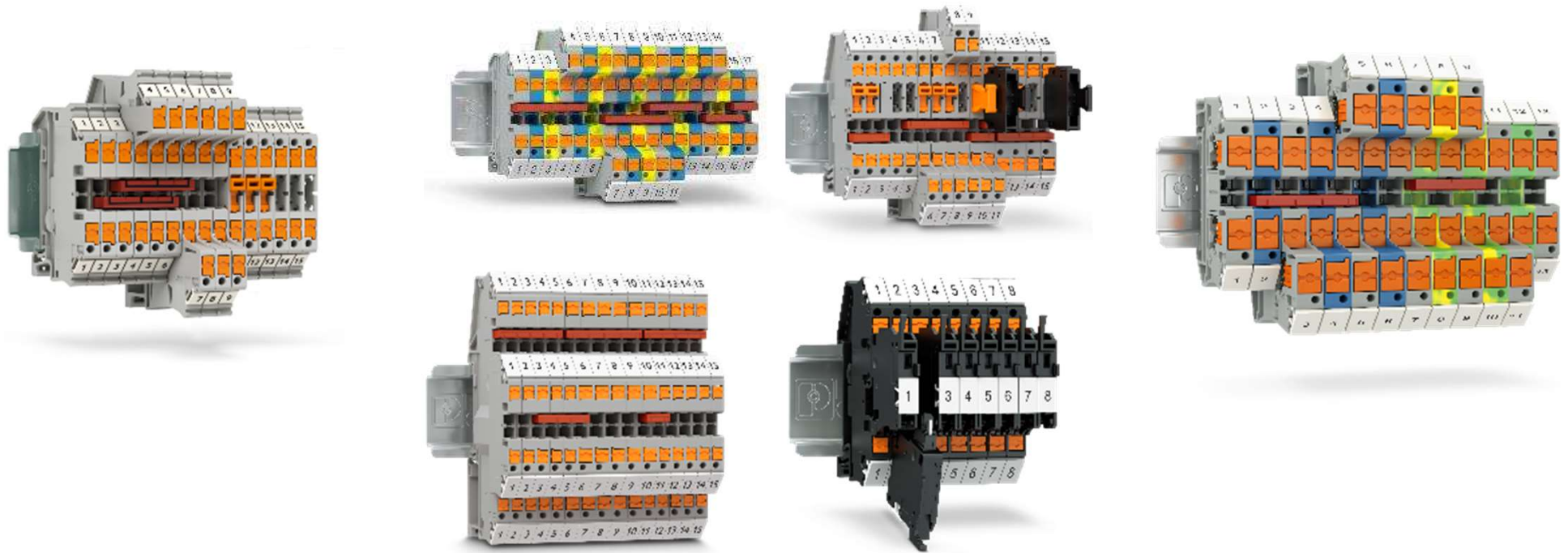
You can utilize your existing control cabinet layouts with screw-terminal wiring and modernize your systems.

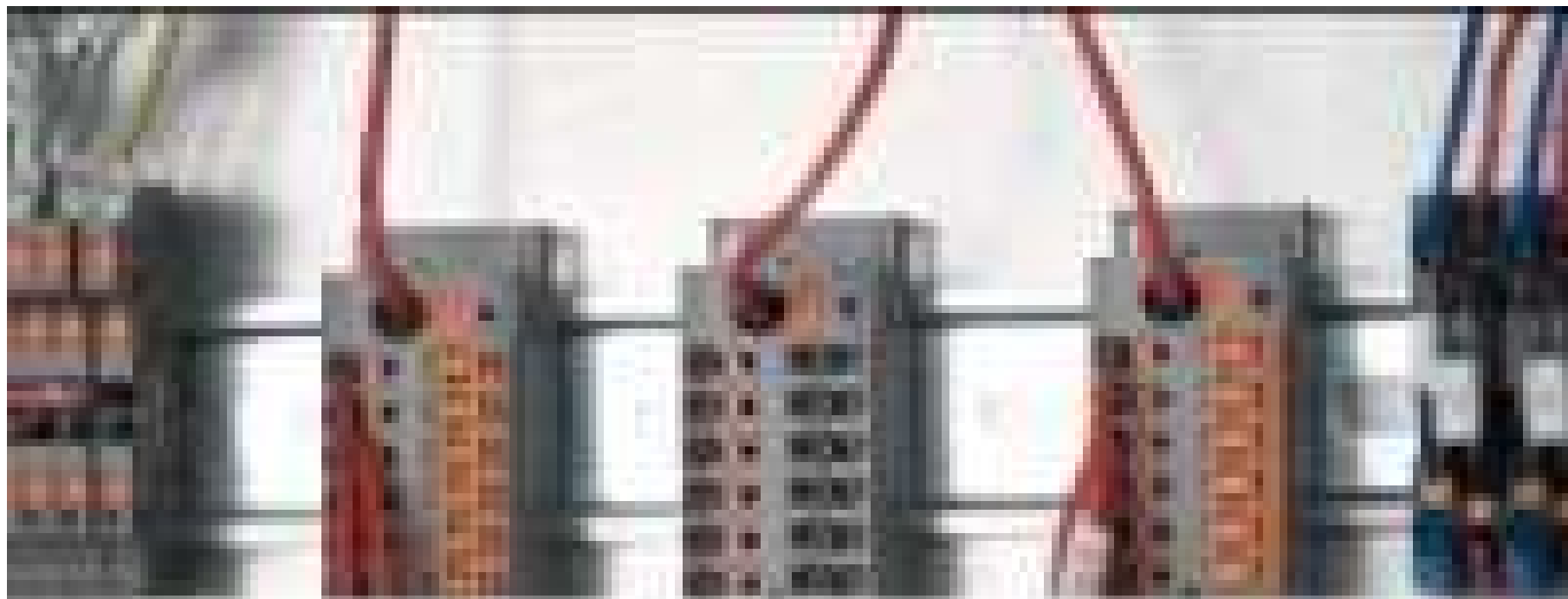
Push-in technology

Because the conductor feed is rotated through 90°, the terminal blocks are ideal for switching over to Push-in technology.

- New Products 2021

PTV: Product range

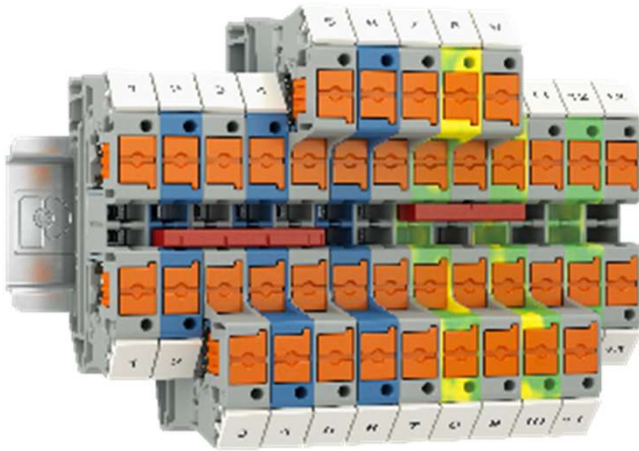




PTFIX function blocks PHOENIX CONTACT

New Products 2021

PTV 6



Innovative Push-in Technology

- High clarity through lateral wiring
- Simple, self-explanatory technology
- minimized installation height

Digital type plate

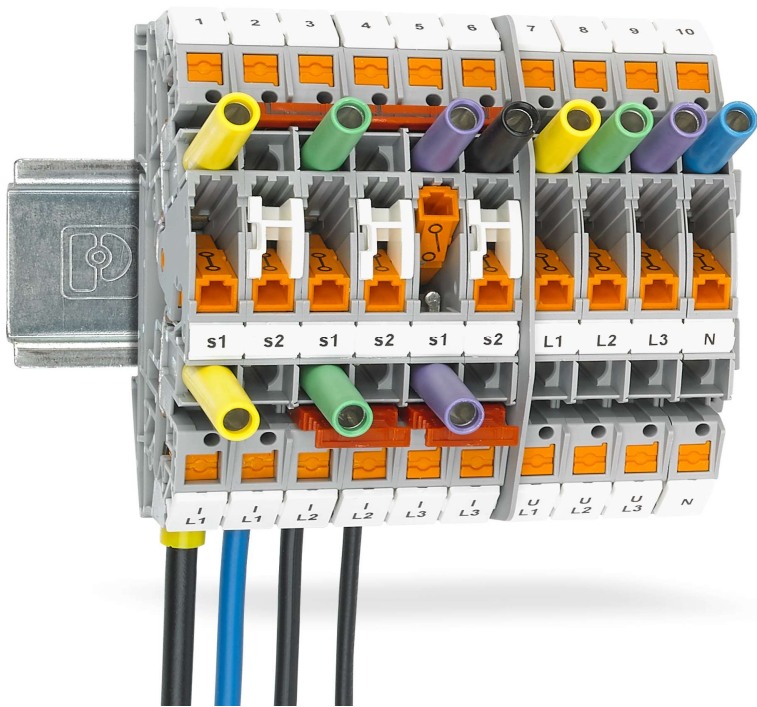
- All tech. product information per QR code
- Ready for eCI@ss advanced and BMEcat
- Access to all approval data at any time

Comfortable planning

- Easy configuration and planning via PROJECT complete
- Delivery service for pre-assembled rails

New Products 2021

PTVME 6/S



Innovative design

- Push-in technology for screw cabinet layout
- Screwless operation lever, 1000V approved
- Vertical wiring direction and cable marking

Full integration

- Ready for eCI@ss advanced and BMEcat
- Download portal with full set of CAE data
- Digital Twin model for automated wiring

Carefree package

- Clear indication of switching status
- Delivery service for pre-assembled rails
- Comfortable planning in PROJECT complete

CLIXTRAB – The combination of terminal blocks and surge protection



New Products 2021

CLIXTRAB – The combination of terminal blocks and surge protection

Easy handling

CLIXTRAB enables easy installation due to the combination of Push-in terminal blocks and pluggable surge protection.

No influence on signal circuits

No impermissible influence on signals due to leakage current free circuits.

Fast error identification

Quick and easy diagnostics with mechanical status indicator and optional remote signaling for integration into digital infrastructures.

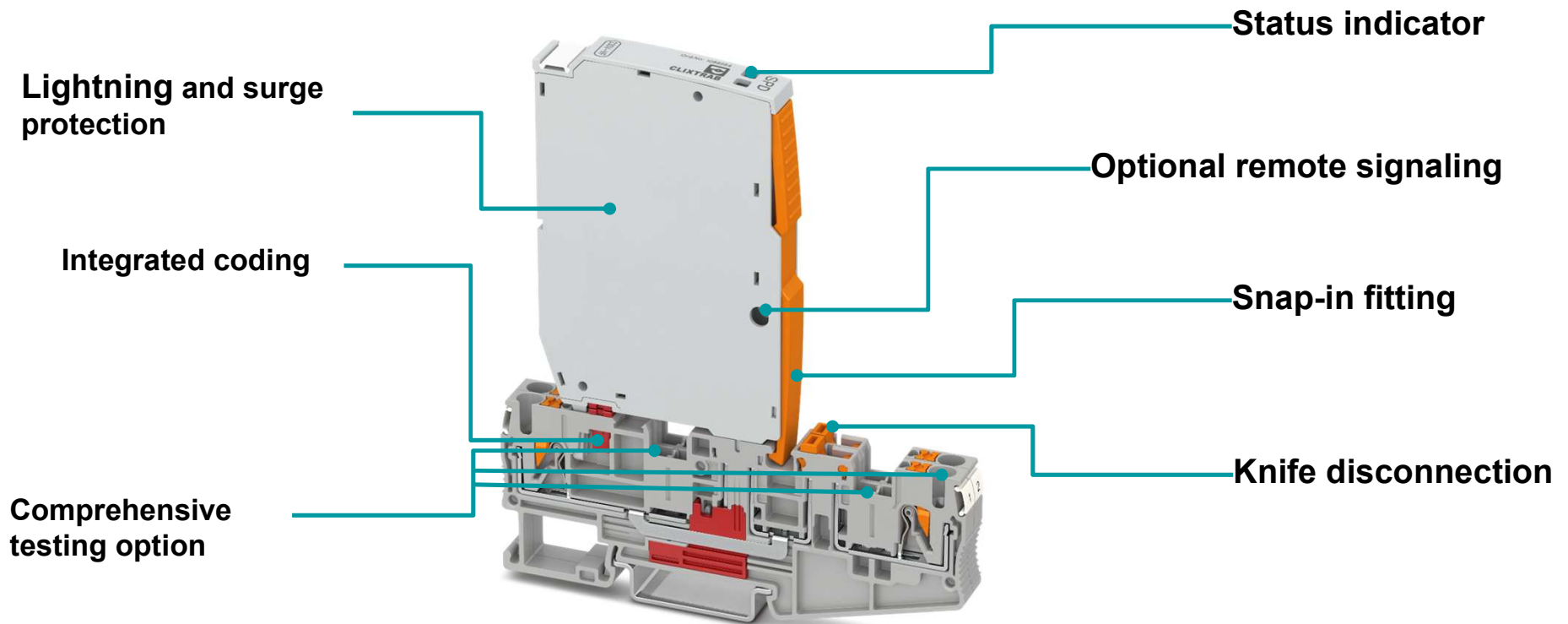
Future-proof

CLIXTRAB satisfies international standards and directives, such as the DB RIL 819.0808 railway directive.



New Products 2021

CLIXTRAB – The combination of terminal blocks and surge protection

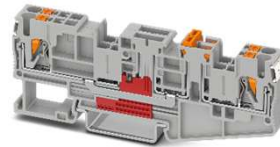


New Products 2021

CLIXTRAB: Product range



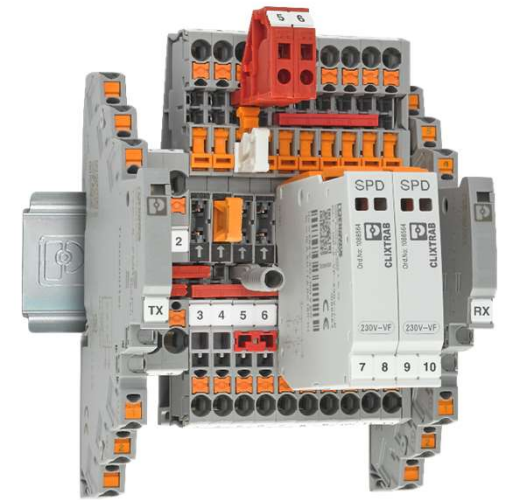
CLIXTRAB Family



Base element
PT 2,5-MT-CLT



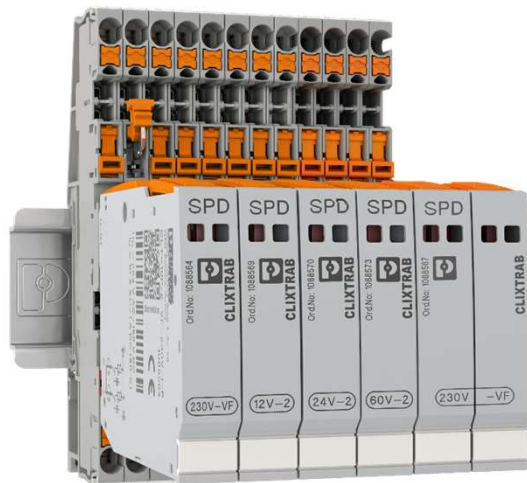
Surge protection plugs
CLT-...-P, 230V, 12V, 24V, 60V



CLIXTRAB with
COMPLETE line accessories

New Products 2021

CLIXTRAB



Narrow width

- Most easy installation with CLIPLINE complete system
- Two terminal blocks instead of three - narrow width of 10.3 mm

Diagnostic function

- Diagnosis of overload
- Optional remote signaling provides 24/7 monitoring
- Integration into digital infrastructures

Testable with CHECKMASTER 2

- Meaningful results with regard to pre-damage of components
- Simple maintenance and documentation

STEP POWER (3rd Gen.) for Industrial and building automation



STEP POWER (3rd Gen.)

Applications

Home Energy Management System to control and distribute the energy generated in the home.

Approvals

Comprehensive approvals for industrial applications:

UL/EN/IEC 61010-1 and ANSI/UL 121201 (Hazloc)

Approval for household purposes: EN 61558-2-16

Approval enables use in the field of e-mobility: EN 61851-21-2

Efficiency Level VI

The low no-load losses and high efficiency grant optimal energy efficiency in the building. STEP3 satisfy the currently high efficiency standard requirements and therefore obtain Efficiency Level VI.

Easy handling

Flexible mounting, either snap onto the DIN rail or screwed onto flat surfaces and quick and easy startup thanks to tool-free push-in connection technology.



STEP POWER (3rd Gen.): Advantages

Compliant with essential standards

- Prepared for industrial and household applications

Narrow

- Up to 200 % increased power density saves space



Maximum efficiency

- High efficiency in the partial load range and low idling losses
- First DIN RAIL power supply with DOE Efficiency Level VI

Push In connection technology

- Quick and easy wiring at 45° angle

New Products 2021

STEP POWER (3rd Gen.): Product range

STEP POWER 3th generation 2020

Output 24 V / 0.63 A ... 5 A

Building automation



STEP POWER 3th generation 2021

Output 12 V / 1.3 A ... 2.5 A and Output 5 V / 3 A

E-Mobility



Powering Raspberry Pi /
single board computer



STEP POWER 3th generation 2021

Output 24 V / 0.63 A ... 5 A

US market /
e.g. LED applications



Flat design!



STEP POWER PHOENIX CONTACT

New Products 2021

STEP POWER (3rd Gen.)



Smallest power losses

- Maximum energy savings both in the partial load range and at no load
- Only DIN-rail power supply with Energy Efficiency Level VI

Complete digital integration

- Design-in: Time savings thanks to simple CAE integration by PROJECT complete
- Simple integration through eCI@ss-classification of the technical data
- QR code leads directly to product documentation (DB, CAD)

Versatile application

- Worldwide approvals in industrial and private applications
- Simplify the approval of the terminal device

THERMOMARK GO – Mobile label printer



New Products 2021

THERMOMARK GO – Mobile label printer



Applications

Allows markers to be created on the spot whenever they are needed, saving time.

Create labels on-site

Intuitive and easy handling thanks to state-of-the-art connectivity to mobile devices such as smartphones and tablets in combination with the MARKING system app.

Intuitive label configuration

The MARKING system app guides users through the marking process.

Easy handling

The THERMOMARK GO.SERIES devices operate with just one uniform material cartridge system.

New Products 2021

THERMOMARK GO: Structure of the system

Ideal companion
with a weight of just 743 g

Flexible marking
with pre-punched labels
and continuous media
with material widths
up to 24 mm

Versatile use
with more than 100 different
materials for all applications



Easy connection
via Bluetooth, NFC,
or USB

Intuitive and convenient
with easy and complete
control via the MARKING
system app

New Products 2021

THERMOMARK GO: Product range



Marking material
More than 100 different material
cartridges



Transport bag
Shoulder bag for storing the
THERMOMARK GO



Transport case
Practical and robust case for storing
the THERMOMARK GO



Power supply unit
incl. 4 adapters for operation of the
THERMOMARK GO

New Products 2021

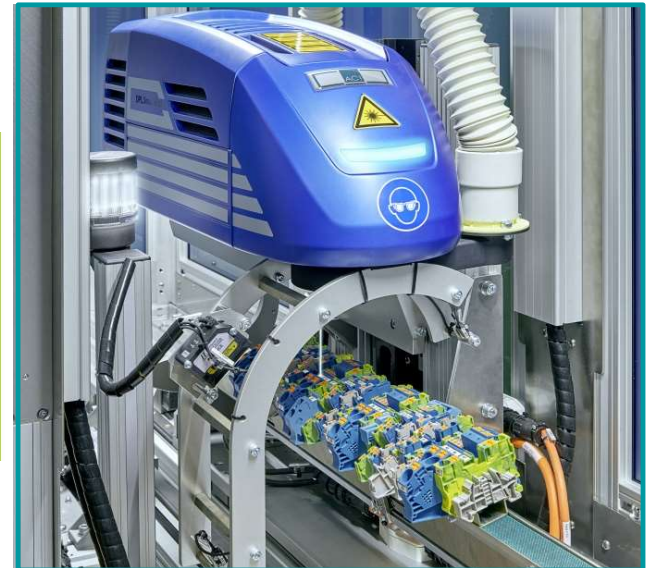
THERMOMARK GO:



Manual
Industrial Marking



Automated
Industrial Marking



Automatic
Industrial Marking

New Products 2021

THERMOMARK GO



Easy Communication

- Touch and GO: Easy pairing via Bluetooth or NFC
- Full smart device control
- Automatic updates

Digital Marking Experience

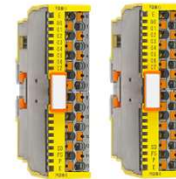
- Context-sensitive menu structures
- Application Wizards: Easy creation of labeling solutions

Ease of Operation

- Smart Edit: Automatic material recognition
- Die-cut labels
- GO SERIES cartridge system

New Products 2021

Main new products 2021



All-in-one industrial PCs – IP65 protection for use in the field



New Products 2021

All-in-one industrial PCs – IP65 protection for use in the field

Applications

All-around IP65-protected configurable industrial PCs for monitoring, operating and programming plants and machines

New markets

Suitable for different applications thanks to expandability of extension box or stacklight

Modular Operator Station

Signal Tower, IPC, Push-Button Box, Keyboard / Mouse, Mounting device and Software can be offered by Phoenix Contact

Modern IPC technology

New powerful generation of IP65 industrial PCs up to Core i5 CPU in an modern and fanless design



New Products 2021

All-in-one industrial PCs



Powerful performance classes

- Intel Pentium N4200
- Intel Core i5-7442EQ

Configurable display sizes

- 15,6" (1920 x 1080 Pixel (Full HD))
- 18,5" (1920 x 1080 Pixel (Full HD))
- 21,5" (1920 x 1080 Pixel (Full HD))

Mounting configurations

- VESA 100 mounting
- Pole mounting
- Support arm mounting

PLCnext Control for Edge computing – Optimized usage of data from the field



New Products 2021

EPC 15xx – PLCnext Control for Edge computing

Applications

create IoT edge solutions for making the best cloud-based use of data from the field.

Unites IT and OT

PLCnext Technology allows easy integration into existing IT infrastructure.

Great time savings

Use pre-installed software tools such as Node-RED, a local time series database, and a simple cloud connection to reduce development and provision times.

Modern edge technology

Data processing in close physical proximity to the user allows information to be exchanged quickly, securely, and without latency.

New Products 2021

PLCnext Control for Edge computing



Compact IPC design

- all-metal housing
- passive cooling (Fan-free system design)

simple and secure management

- integrated web-based management tool

Powerful hardware

- Powerful Intel® Celeron® processor
- Extended local data storage
- Linux operating system

SPLC 1000 – PLC extension for PLCnext Control



New Products 2021

SPLC 1000 – PLC extension for PLCnext Control



Applications

Individual extension of the PLCnext Control AXG F 2152 and AXG F 3152 for PROFIsafe networks in factory automation, energy automation, process automation or wind industry

Decentral safety functionality

Safety-relevant high performance small scale safety controller with full functionality for cost-intensive applications.

Safety up to SIL3/PLe

Safety extension for PLCnext Technology applications with a particularly high safety requirements in accordance with SIL3/PLe

Reloadable C functions

Rapid implementation of complex functional safety requirements with reloadable C functions.

New Products 2021

SPLC 1000



High Performance

- Up to 32 PROFI-safe devices
- CPU: 2 x Arm® Cortex® M4

Flexibility

- Simultaneous operation as F-host and F-device

Easy programmable

- Reloadable C functions

Axioline Smart Elements – Network-independent safety solutions



New Products 2021

Axioline Smart Elements – Network-independent safety solutions

Applications

Safe I/O modules with integrated SafetyBridge Technology allow the easy and network-independent realization of decentral safety solutions up to PL e and SIL 3

Cost-effective

Realize safety solutions without additional safety controllers thanks to SafetyBridge Technology

Maximum system availability

Get real-time access to safety-relevant status and diagnostic information



New Products 2021

Axioline Smart Elements



Network-independent safety solutions

- Up to SIL 3 in accordance with EN 61508
- Up to SILCL 3 in accordance with EN 62061
- Up to Cat. 4/PL e in accordance with EN ISO 13849-1

Compact I/O modules

- 8 safe inputs with 1-channel assignment
- 4 safe inputs with 2-channel assignment
- 4 safe outputs with 1-channel assignment
- 2 safe outputs with 2-channel assignment

Easy configuration

- Via the SAFECONF software

Safety switches – Emergency switching-off / emergency stop



New Products 2021

Safety switches – Emergency switching-off / emergency stop

Applications

Immediate switching of machines over to a safe state in the event of an emergency - suitable for applications in accordance with EN ISO 13850 and EN 60204-1

Flexible installation options

Install the emergency stop on the operating panel of your system or directly at the place of use

Chose what you need

Choose from our ready-to-use solutions for your standard application or configure your own emergency stop solution tailored to your requirements

New Products 2021

Safety switches



Increased occupational safety

- Illuminated buttons in accordance with the EN ISO 13850 for a reliable differentiation between active and inactive emergency stop devices in the event of danger

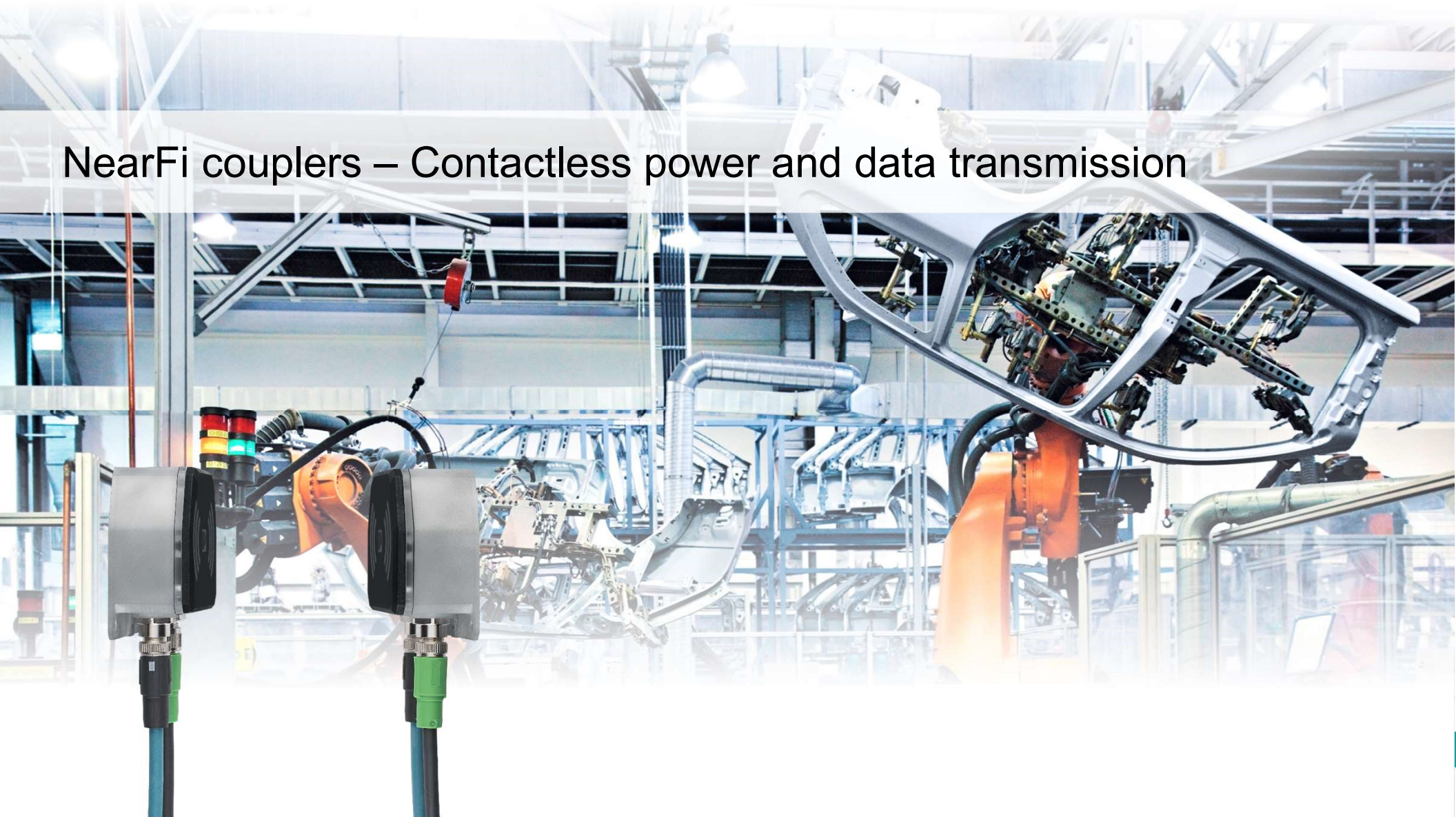
Rapid on-site diagnostics

- colored switching position indicator for an easy distinction of actuated switches from unactuated switches at a glance

Protection against installation errors

- Self-monitoring emergency stop contact modules will automatically switch the machine to the safe state if errors or damage occur between the contact module and actuator when installing the emergency stop switch

NearFi couplers – Contactless power and data transmission



New Products 2021

NearFi couplers – Contactless power and data transmission

Applications

Contactless transmission of power and ethernet data in realtime over a small air gap to replace connectors that are connected and disconnected frequently.

Protocol-independent and latency-free

Transmit Ethernet data up to 100 Mbps in real time and fully protocol-transparent

Powerful

With NearFi couplers, power (24 V, 2 A) and real-time Ethernet data (100 Mbps, full duplex) can be transmitted

Flexible

Make use of flexible proximity options and the possibility to send power and data through non-metallic materials.

New Products 2021

NearFi couplers



Wireless transmission of ethernet in real time

- up to 100 Mbps
- Latency-free
- Protocol-transparent

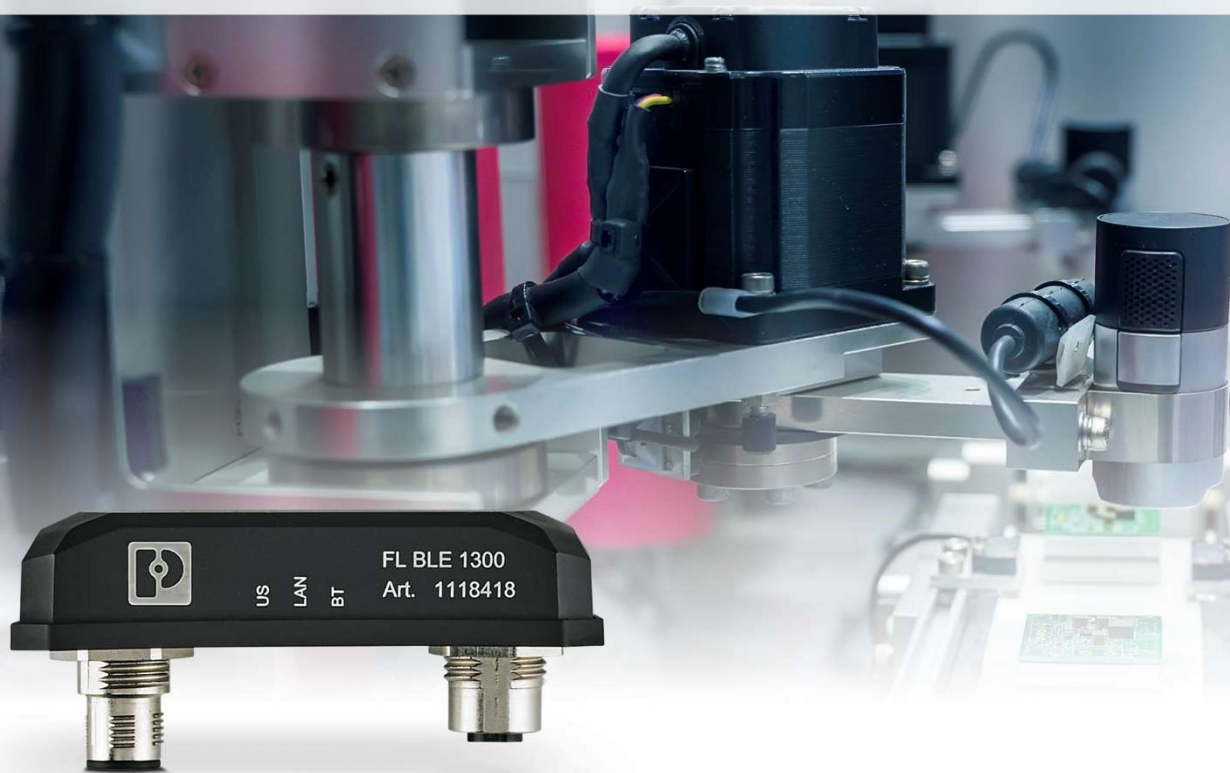
Rugged design

- Robust IP65 housings
- M12 connections for Ethernet & power
- Resistant to dust and dirt
- Flexible proximity options
- Mounting via a flange or the inside thread

Easy commissioning and diagnostics

- Plug and play - no configuration needed
- Integrated alignment aid
- All-round visual signaling with bright LEDs
- Digital output for diagnosis via a higher-level control system.

FL BLE 1300 – Bluetooth Low Energy adapters



New Products 2021

FL BLE 1300 – Bluetooth Low Energy adapters

Applications

Allows the integration of Bluetooth-Low-Energy-capable sensors into industrial controllers and IoT systems.

Ready for IoT

Make data acquired from BLE-sensors available to PLCs and cloud applications or perform a simple evaluation of the sensor data directly in the field

Future-proof standard

The BLE 5 standard allows the latest encryption methods and is also backward-compatible with sensors that meet the Standard BLE 4.2 and 4.0 standards.

Flexible communication

Connect up to eight sensors via TCP with almost all controllers and PC-based software systems.



New Products 2021

FL BLE 1300



Made for industrial use

- IP65 degree of protection
- Industrial temperature range
- Robust M12 connections

Easy installation

- Integrated antenna
- Easy mounting via two drill-holes directly onto a housing wall
- QUICKON M12 fast connection technology

Future proof communication

- Supports Bluetooth Low Energy 5.0
- Communication via GATT profile for easy and flexible access to the sensor data
- Access to up to eight sensors via TCP

FL SWITCH TSN 2300 – Managed TSN Switches



New Products 2021

FL SWITCH TSN 2300 – Managed TSN Switches

Applications

The Managed TSN Switches facilitate the setup of applications with precise time synchronization, thus ensuring real-time communication and increased availability in your automation networks.

More performance, robustness, and availability

TSN standards enable deterministic real-time communication, making network convergence of IT and OT possible

Easy configuration

The user-friendly TSN configuration via PROFINET 2.4 engineering is just as easy as with classic PROFINET RT.

Proven and future proof

Supporting all functions of the FL SWITCH 2300 series, the devices can also be used in classic applications.



New Products 2021

FL SWITCH TSN 2300



Support of TSN features

- IEEE 802.1AS (precise time synchronization)
- Frame preemption
- Stream management via PROFINET

User-friendly configuration

- Web-based Management
- PROFINET Device
- SD card
- Command-line Interface

Support of classic Switch features

- Redundancy (e. g. RSTP, MRP)
- Security (e. g. port security, user management)
- Quality of Service (e. g. CoS, DSCP)
- Extensive diagnostics (e. g. Syslog, SNMP)

FL SWITCH 1600/1700 and 2600/2700 – Switches in IP67



New Products 2021

FL SWITCH 1600/1700 and 2600/2700 – Switches in IP67

Applications

Unmanaged and Managed switches for applications in which the switches are to be mounted in decentralized installation on the field level where they are not protected by a control cabinet.

Compact, robust, for use practically anywhere

The metal housing and slim-line design give you practically limitless opportunities when selecting the mounting location

Proven and innovative at the same time

The flexible M12 connections enable both, the use of classic M12 connectors and the innovative M12 Push-Pull fast locking system

Efficient power supply with minimum wiring work

The redundant power input/power output concept allows you to supply power to several switches or I/O stations with minimum cabling work.



New Products 2021

FL SWITCH 1600/1700 and 2600/2700



Highest flexibility

- Unmanaged and Managed switches
- Flexible mounting on a metal profile, the machine or a wall
- Flexible cable connection: M12 screw or M12 push-pull connection

Optimized for industrial use

- Robust metal housing
- IP65 / IP66 / IP67 degree of protection
- Temperature range: -40°C ... +70°C

Easy configuration

- Configuration via a mode button on the device, a microSD card, the web-based management, CLI, SNMP, and PROFINET device (only Managed Switches)

Inline function I/O module for building automation Light management with DALI



New Products 2021

Inline function I/O module for building automation Light management with DALI

Application

DALI (Digital Addressable Lighting Interface) is a lighting control system which is very popular in the building automation industry. Phoenix Contact offers a new DALI module which can be used with the ILC 2050 BI controller.

Great flexibility

Implementation of light scenes which can be used and exchanged as needed.

Direct storage

Configuration data is stored directly in the lights. This data defines the group assignment as well as the dimming level in each scene.

Robust communication protocol

Communication and power supply between DALI control device and DALI lights can be routed through one cable, saving time and money on installation.



New Products 2021

Inline function module



Complete solution

- Direct connection to the ILC 2050 BI without gateway
- Matching I/O modules certified by the DALI Alliance DiiA according to the latest DALI-2 standard.

No programming effort

- The Emalytics software enables the easy and fast DALI configuration and engineering thanks to the DALI tools and libraries available.

Certified

- DALI master with integrated DALI bus supply
- Suitable for both single and multi-master operation
- Supports the DALI-2 standard

ERS 1000 – Room operating unit for building automation



New Products 2021

ERS 1000 – Room operating unit for building automation



Applications

The new ERS 1000 is a room operating unit for typical room functions such as lighting, shading and temperature settings. It is a part of the building automation solution “Emalytics”.

Compatible switch programs

The ERS 1000 can be installed in commercially available switch programs. (A listing is available)

Large range of functions

The intuitive menu navigation via appealing icons and the individual labeling of all operating functions enable the user to make targeted settings in the room. Furthermore, special functions such as scenario control and information display as well as quick and easy recording of sensor data are included.

Easy commissioning

The ERS 1000 is connected to the ILC 2050 BI controller via Ethernet. It can be integrated simple and configured individual in Emalytics building management system.

New Products 2021

ERS 1000



High usability

- One operating unit for a wide range of room functions instead of many individual controls and switches

Easy commissioning

- All functions are already programmed into the device.

Comprehensive product portfolio

- Room climate measurement with extension with sensor modules
- Power supply for the ERS 1000-R room operating units with voltage feed-in via the Ethernet cable.