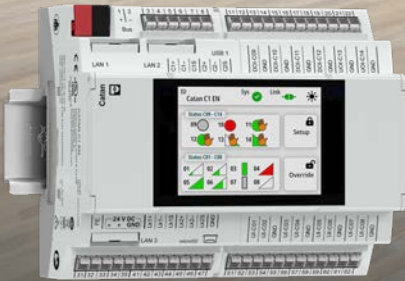


powered by

niagara  
framework



## Catan – The innovative product family

A comprehensive building automation solution

# Catan – The innovative product family

With Catan, Phoenix Contact is the first manufacturer to produce a building automation controller that has been Cradle to Cradle Certified®. This certification is the leading global standard for designing and making products that enable a healthy, equitable, and sustainable future.

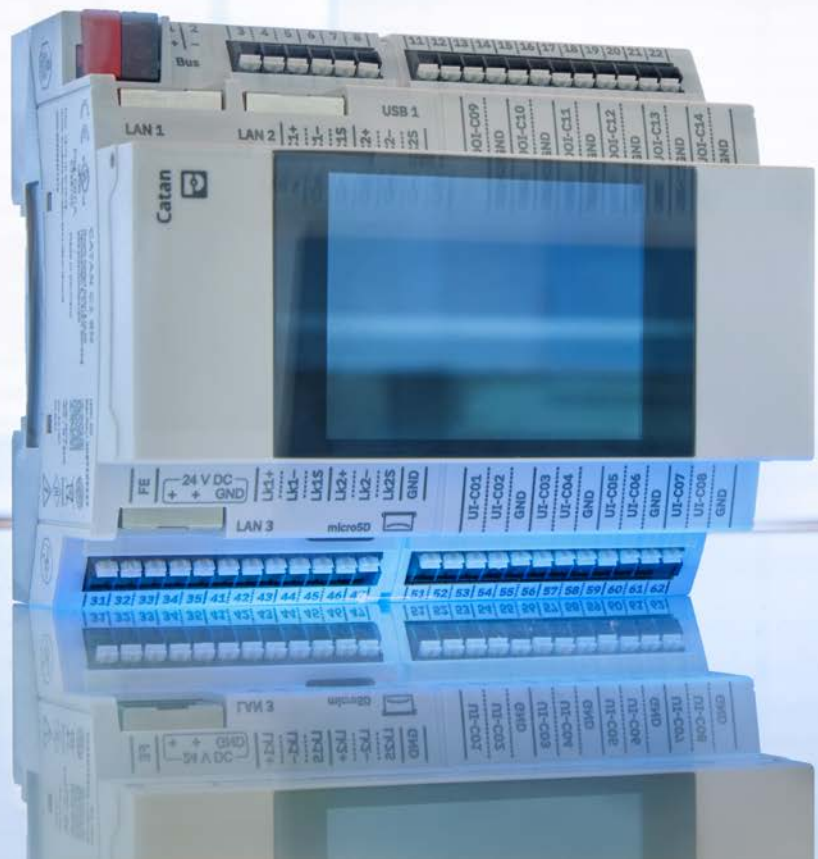
The Catan product family meets the requirements of the building automation market segment with a focus on room automation. The Catan controller is the central component of the Catan product family, with a highly flexible mix of inputs and outputs for more space and cost savings. Emalytics and the Niagara Framework offer powerful tools for programming environments, making it possible to integrate protocols such as BACnet, KNX, Modbus, MQTT, OPC UA, and more.

## Key features

- ✓ High I/O density with 14 channels
- ✓ Multi-I/O level
- ✓ Removable and transferrable display
- ✓ High performance with 1.6 GHz Quadcore processor
- ✓ Three-port managed Ethernet switch
- ✓ Multi-protocol system
- ✓ RS485, USB, and KNX bus access
- ✓ Security by Design EN 62443
- ✓ UL Listed, UL 61010-1, UL 61010-2-201

## Space-saving design

- ✓ Compact with 42 terminal points
- ✓ Flexible assignment of terminal points with configurable inputs and outputs
- ✓ Visual displays and audible signals
- ✓ Standardized width of six division units for controllers and extension modules



## Products

### Catan C1 EN - A comprehensive control system for building automation

- Building automation controller with communication to expansion modules based on SPE
- i-MX8M mini Quad 1.6 GHz processor
- 1 GB RAM, eMMC 8 GB,  $\mu$  USB 4-64 GB
- 3 x ETH ports, 1 Gb switch
- 2 x USB-C ports
- 2 x SPE ports, link bus to the expansion modules
- 2 x RS485
- 1 x KNX TP interface
- Audible alarm
- 8 x universal inputs UI: 0-10V, 4-20mA, DI, resistance, temperature sensor
- 2 x universal outputs/inputs UOI: 0-10V, digital out
- 4 x digital outputs/inputs DOI: digital in, digital out



Part No. **1371432**

### Catan DOR6 UI8 – I/O extension module

- Relay extension module
- Switching of loads for building applications in sun protection, lighting, 230V drives/loads
- HMI connection
- Audible alarm
- 6 x relays, 16A / 230V
- 8 x universal inputs: 0-10V, DI, resistance, temperature sensors, digital input



Part No. **1371364**

### Catan control panel – Plug-in display for local operation extension module

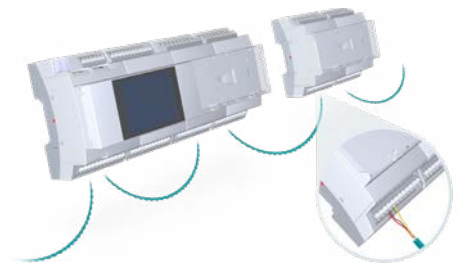
- Multicolor touch 2.4" screen
- 320x240 pixels
- Tool-free mounting on the controller or expansion module or detached via USB cable for use as a local priority operating level



Part No. **1371366**

### Expansion through Single Pair Ethernet (SPE) extension module

- Up to 16 extension modules
- Up to 1000 ft. distance between two nodes
- Usable with most twisted pair cable-types
- Independent of polarity



## Accessories

Extension cable for display for remote operation of Catan products, length 2 m

Part No. **1665797**



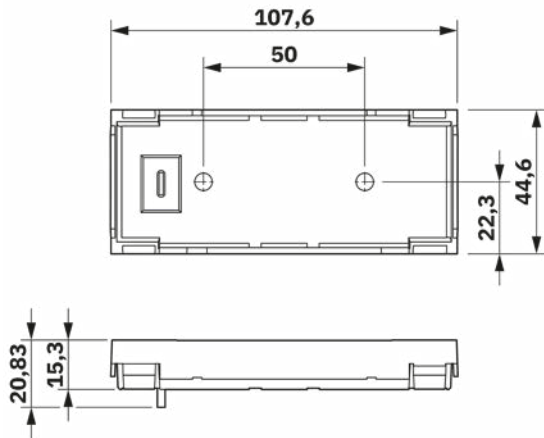
Mounting set for remote operation of the Catan display

Part No. **1478438**

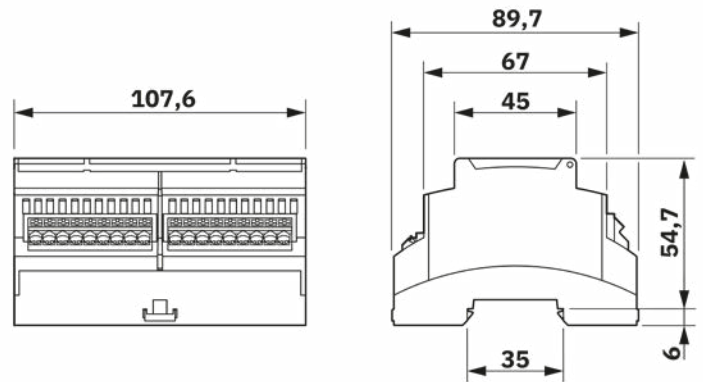




### Catan control panel



### Catan controller and expansion modules



*Product dimensions included to assist in cabinet design*

## Open communication with customers and partners worldwide

Phoenix Contact is a global market leader based in Germany. We are known for producing forward-thinking products and solutions for the comprehensive electrification, networking, and automation of all sectors of the economy and infrastructure. With a global network, we maintain close relationships with our customers, something we believe is essential for our common success.

You can find your local partner at  
[phoenixcontact.com](https://phoenixcontact.com)

