

2025 Fall Specials

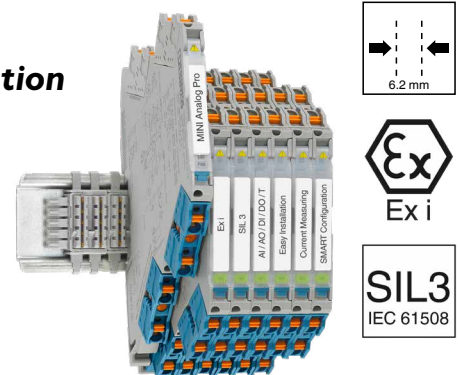
Quarterly Special valid from October 1st – December 31st, 2025

A milestone in miniaturization

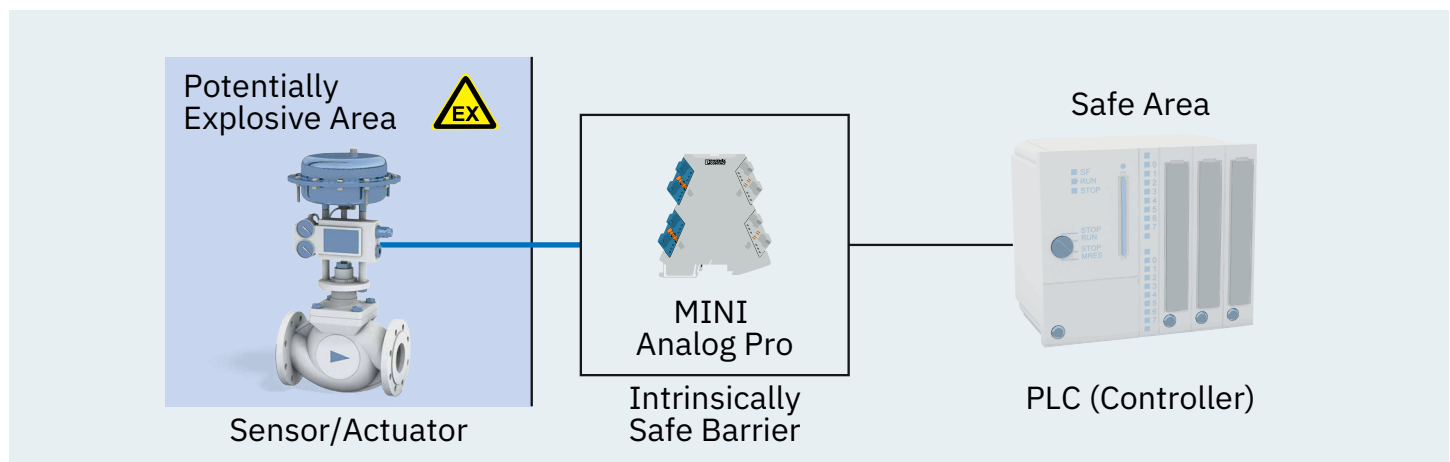
NEW

Compact signal conditioners for Intrinsically Safe application

The new Ex i versions in the MINI Analog Pro 6.2 mm signal conditioner family provide explosion protection and functional safety in an unrivaled compact design. With space savings of up to 50% compared to current solutions, measurement technology signals are reliably processed while at the same time ensuring the protection of people, the environment, and systems. The products are consistently rated to the highest safety level, SIL 3 one out of one. The operating concept and end-to-end digitalization are particularly user-friendly and future-proof.



Download Product Flyer



Configurable signal tower with IO-Link Individual signaling

The new signal towers use IO-Link to communicate machine and system states in individually adjustable colors and tones. The signal towers are available in two sizes with nine or 15 segments. The robust design enables them to be used in many applications.

Main features

- Traffic light mode, autoscale mode, level mode, or individual mode
- IO-Link communication
- 10 different signal tones
- RGB color spectrum
- M12 connection technology, 4-pos.
- 9 or 15 segments with and without acoustic element



Your Advantages

- ✓ High degree of flexibility with individual configurations in one compact tower
- ✓ Easy parameterization
- ✓ Clear signaling with homogenous light pattern and full-surface light fixture
- ✓ Robust industrial design for harsh environments

IPD Installation System

IPD installation connectors impress with their easy handling and safe installation. With device-side Push-in connection and field-side Push-lock connection, you can assemble connectors and panel feed-throughs quickly and easily without tools.

Features and Benefits

- ✓ Easy distribution of power, as components are plugged directly
- ✓ Simple, time-saving wiring in the field with Push-lock connection
- ✓ Reliable in harsh environments — IP66, IP68, IP69K system-wide
- ✓ 3/5 Poles, Up to 20A/600V, IP69K, Toolless!



Order no.	Description	Details	Promo Price
1088672	IPD PL 3P2,5 M GY	3-positon Male connector, Push-lock	\$11.99
1088674	IPD PL 3P2,5 F GY	3-positon Female connector, Push-lock	\$11.99
1088676	IPD PL 5P2,5 M GY	5-positon Male connector, Push-lock	\$14.99
1088678	IPD PL 5P2,5 F GY	5-positon Female connector, Push-lock	\$14.99
1088700	IPD W 3P2,5 M 0,5 M20 GY	Panel feed-through, 3-poles, Male, 0.5m	\$11.99
1088702	IPD W 3P2,5 F 0,5 M20 GY	Panel feed-through, 3-poles, Female, 0.5m	\$11.99
1088704	IPD W 5P2,5 M 0,5 M25 GY	Panel feed-through, 5-poles, Male, 0.5m	\$14.99
1088705	IPD W 5P2,5 F 0,5 M25 GY	Panel feed-through, 5-poles, Female, 0.5m	\$14.99

Thermomagnetic Device Circuit Breakers

Function and design

Thermomagnetic device circuit breakers are tripped both thermally and magnetically. The two systems, bimetal and solenoid, operate independently of one another.

This means that in the event of a short circuit, the thermomagnetic device circuit breakers trip more quickly than thermal device circuit breakers.

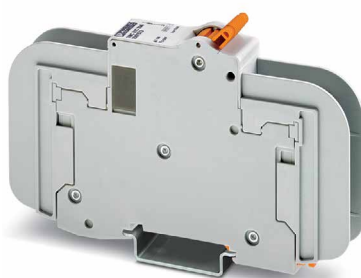
As a rule, in the event of a short circuit, the tripping mechanism is actuated within 3 to 5 ms.



Download full product table

TMC 8 series — UL 489

1 Pole



\$16.55

2 Pole



\$38.55

3 Pole



\$52.55

TMC 7 series — UL 1077

1 Pole



\$14.85

2 Pole



\$27.85

3 Pole



\$38.85

Innovative Solutions To Prep & Wire Your Control Cabinet Efficiently

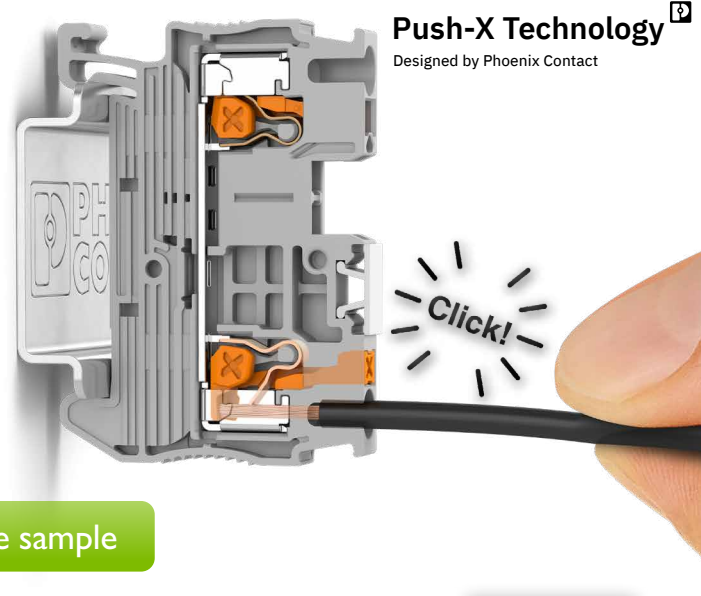
Push-X technology

An innovation created by Phoenix Contact

A new concept in tool-free conductor connection: Push-X can accommodate all types of conductors with tool-free direct wiring and without significant force. A pretensioned contact spring lies at the heart of this new technology.

Experience the future of electrical connections

- ✓ Simply insert the wire until it reaches the locking mechanism at the end of the contact chamber
- ✓ Clamp the conductor effortlessly by lightly tapping the locking mechanism surface
- ✓ An audible click reassures a secure connection, which is also visually verified by the position of the pusher



 Order a free sample

More Flexibility

Tool-free installation of all types of conductors

Test Disconnect

The latest in connection technology combined with the easiest operation

Innovative

"Make before Break" function bar for CT testing

Clear Visualization

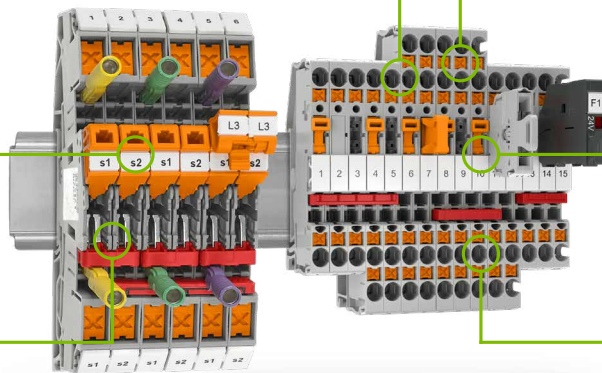
The pusher position shows if the conductor is connected

Fully Compatible

With the CLIPLINE complete terminal block system

Fast

Highly efficient connection technology



\$7100

New Automatic Stripping device E. FOX S10

NEW

With the electric E.FOX S10 automatic stripping device, you can strip wires with different cross-sections and types of insulation easily and efficiently.

- The compact automatic stripping device can be integrated into and controlled via worker assistance systems
- The touch display makes operation intuitive.
- Settled favorites can be linked to a bar code and accessed using a handheld scanner for faster repeat project
- Stripping length: 2mm ... 20mm
- From 28AWG to 8AWG

Order no.
1554298

