



Antonio Gordillo / 21 Mayo 2021 / IMA Marketing

# Welcome

## **Presentación**

## **Novedades 2021**

## **Lámparas LED y Señalizaciones**



New 2021    Controladores / I/O's / Lighting and Signaling

## Agenda

---

### ➤ Lighting and Signaling

- PLD E 400
- PLD E 600
- PLD M 140
- PSD S IO Link
- PSD-S50



PLD M Machine Lights

# Portfolio Overview



Class 100			Class 200		
IP54		IP67		IP69	
<u>Not</u> resistant against coolants and lubricants			Resistant against coolants and lubricants		
Ø 25 mm	Ø 35 mm	Ø 23 mm	Ø 40 mm	Ø 70 mm	284x58x20 mm

Machine Lights PLD M 140

## Technical comparison of class 100 lights

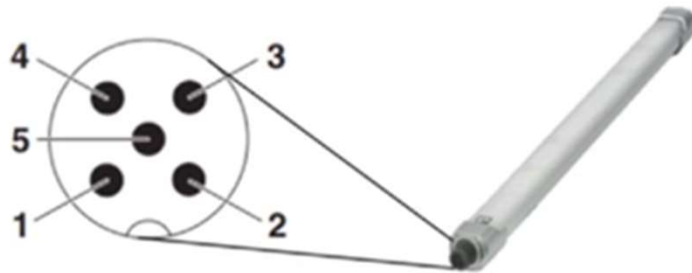
Technical data	PLD M 140 W .../D25	PLD M 140 W .../D35/SC
Lengths variants	195, 335, 615, 895 mm	
Diameter	25 mm	35 mm
Swing angle	(±60°)	(±75°)
Emission angle	89°	85°
Lumen output	315 lm ... 1890 lm	550 lm ... 3300 lm
Ambient temperature (operation)	+5 °C ... +40 °C	+5 °C ... +50 °C
Mechanical resistance	4g vibration and 25g shock	
Degree of protection	IP54	
Approval	ETL Intertek	

PLD M 140 Machine Lights

## Control of lights

- PLD M 140 W .../D25
  - Effortless switching

Pin	Assignment of the input connector
1	24 V DC
2	Not used
3	GND
4	Effortless switching (0 = light on; 1 = light off)
5	Not used



PLD M 140 D35 Machine Lights

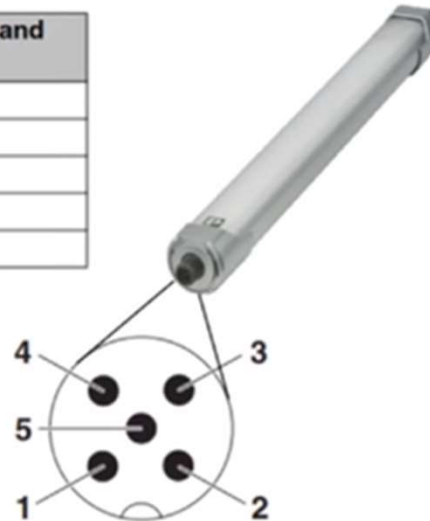
## Control of Lights

- PLD M 140 W .../D35/SC

- Dimming

Pin	Assignment of the input connector and the output socket
1	24 V DC
2	Bit 0 of dimming signal
3	GND
4	Bit 1 of dimming signal
5	Bit 2 of dimming signal

Dimming level %	Signal			
	Bit 2	Bit 1	Bit 0	
0	0	1	0	
40	0	1	1	
50	1	1	1	
60	1	1	0	
70	0	0	1	
80	1	0	1	
90	1	0	0	
100	0	0	0	



PLD M 140

## Control of Lights





Machine Lights

## Replacement of PLD M 160



PLD M 160...



PLD M 140 ...

### PLD M 140...

- ✓ Universal mounting bracket provided
- ✓ Price 10 - 45 % (depending on length and variant) below existing PLD M160 – *with at least **two times higher** lumen output*
- ✓ M12 connection technology for variable cable lengths
- ✓ Degree of protection IP54 – enough for the lighting application



## Machine Lights

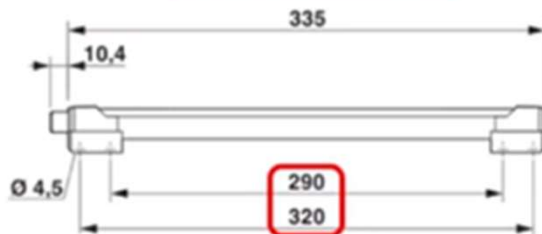
# Replacement of PLD M 160

- The PLD M 160 lights can be replaced by the PLD M 140 lights without changing the distance of the mounting holes

PLD M 160...



PLD M 140 ... /D25



# Installation Situations



## General

- Applications **without** coolants and lubricants
- For simple applications

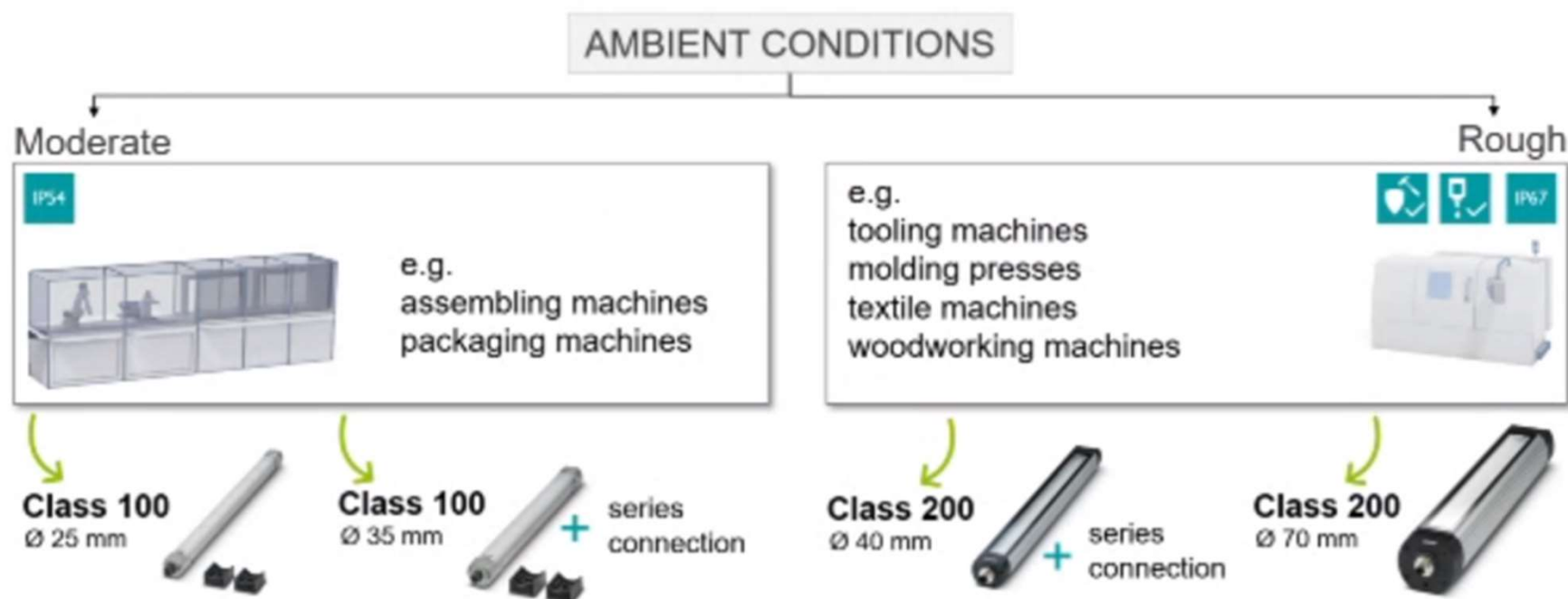
## PLD M 140 W .../D25

- Mounting in small installation areas
- Distances up to  $\approx 1$  m
- Illuminated area up to  $1,5 \text{ m}^2$  per light

## PLD M 140 W .../D35/SC

- Distances up to  $\approx 1,5$  m
- Illuminated area up to  $2 \text{ m}^2$  per light
- Illumination of long machines

# The right product for every environment





## PSD Signal Towers

# Portfolio Overview



Numerous optical and acoustic elements can be flexibly combined with the modular signal towers – just like you need it. The modular structure enables a later retrofitting of additional elements.

- ✓ Large selection of optical and acoustic elements
- ✓ Control via IO-Link interface
- ✓ Reliable in harsh industrial environment due to high protection class
- ✓ Fast installation due to bayonet connection



PSD-S

new

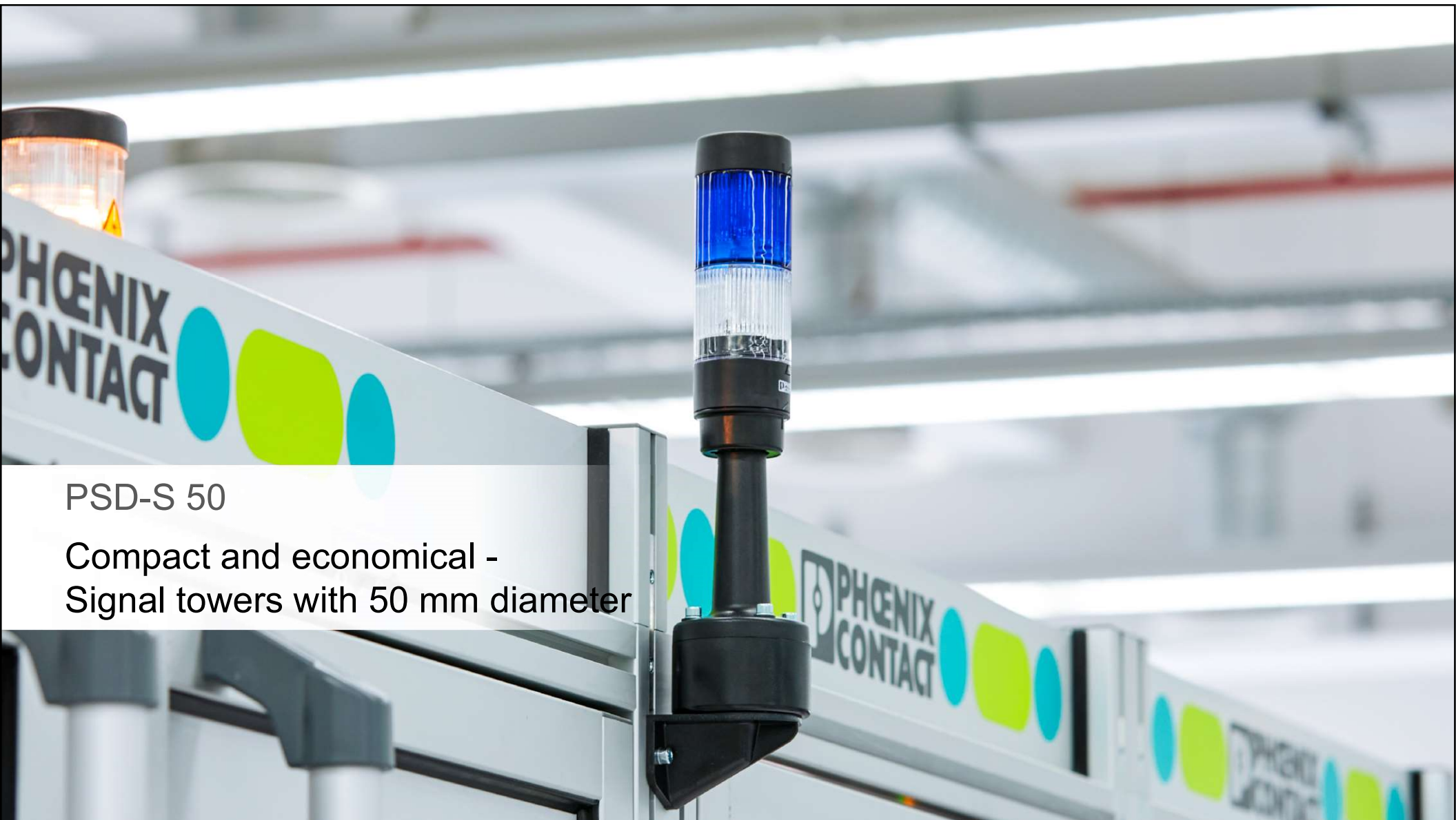


The cost-optimized LED signal towers provides an appealing industrial design. And is ideally suitable for compact machines. Thanks to the innovative wiring concept the individual calottes can be arranged in any desired order.

- ✓ Reliable in harsh industrial environment due to high protection class
- ✓ Fast installation due to bayonet connection



PSD-S 50



PSD-S 50

Compact and economical -  
Signal towers with 50 mm diameter



PSD-S 50

## Advantages

“ The cost-optimized LED signal towers provides an appealing industrial design. And is ideally suitable for compact machines. Thanks to the innovative wiring concept the individual calottes can be arranged in any desired order. ”

- ✓ Reliable in harsh industrial environment due to high protection class
- ✓ Fast installation due to bajonet connection





PSD-S 50

## Features

**50mm diameter**  
small and compact

**Push-In connection**  
directly in the base unit

**Basic element with various mounting options**

- Floor mounting
- Pipe assembly
- Magnetic base
- NPT thread



**Acoustic element**

- 8 sounds

**Optical elements**

Up to 5 optical elements or  
4 optical elements + one acoustic element

**Signal elements**

- red
- orange
- green
- clear
- blue



PSD-S 50

## Simple control

- Signal towers elements are driven via parallel wiring and are connected at the connection element
  - Up to five optical elements or four optical elements plus one acoustic element
- Electrical connection via push-in connection
- Max wire cross section up to 1,5 mm<sup>2</sup>
- Open the connection element to connect the conductors



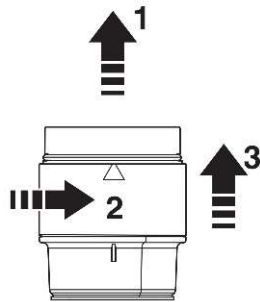
i

Max. 5 signal elements  
per signal tower!

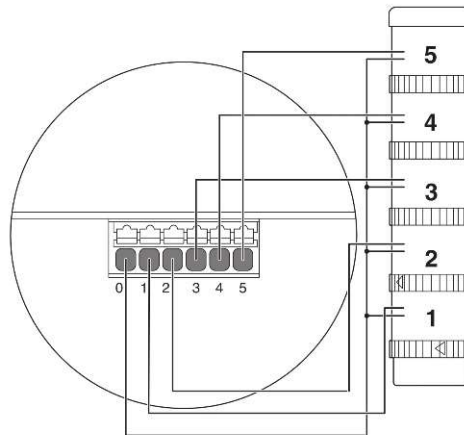
PSD-S 50

## Opening and closing the connection element

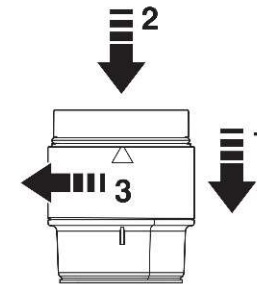
Open the connection element



Connect the conductors



Close the connection element



PSD-S 50

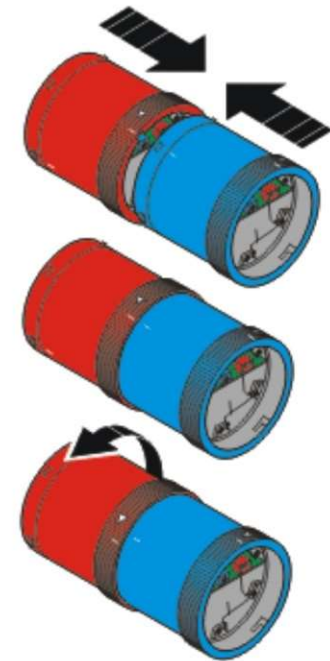
## Fast assembly

- Tool-free assembly thanks to bajonet-connection system
  - Elemente are mechanically and electrically connected within seconds with each other.



NOT COMPATIBLE!

PSD-S (70mm) and PSD-S 50 (50mm)  
are not compatibel to each other.



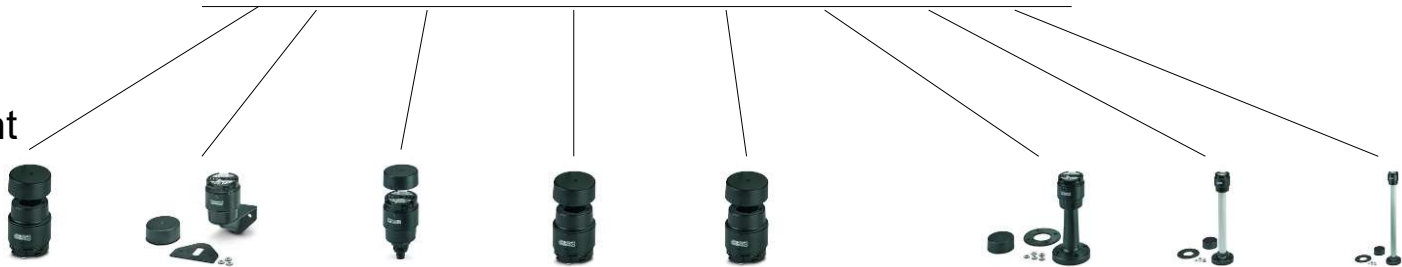
PSD-S 50

# Portfolio PSD S-50

Signal element



Connection element




Mounting options



PSD-S 50

## Portfolio


### OPTICAL SIGNAL ELEMENTS

	Specification (color)	Order no.	Description
	ORANGE	1018262	PSD-S 50 OE LED AM
	RED	1018261	PSD-S 50 OE LED RD
	CLEAR	1017888	PSD-S 50 OE LED CL
	BLUE	1018737	PSD-S 50 OE LED BL
	GREEN	1018264	PSD-S 50 OE LED GN

PSD-S 50

Portfolio

ACUSTIC SIGNAL ELEMENTS

	Specification	Order no.	Description
	8-tone siren	1018874	PSD-S 50 AE SM8-1 95DB/1



PSD-S 50 signal tower

## Portfolio

### CONNECTION ELEMENTS



#### Specification (color)

UNIVERSAL

Base with integrated M12  
5-pin connector

base for NPT 1/2"  
conduit mounting

Base for vertical  
mounting

Pole connection on pole  
with integrated foot

#### Order no.

1018740

1018853

1018850

1018742

1018760

1018801

1018845

#### Description

PSD-S 50 CE

PSD-S 50 CE M12-5P

PSD-S 50 CE A-NPT 1/2

PSD-S 50 CE BR-SM/HCR

PSD-S 50 CE BT 100


PSD-S 50 CE BT 250-M

PSD-S 50 CE BT 400-M

PSD-S 50

## Portfolio

### VISIBLE MOUNTING ELEMENTS

	Specification (color)	Order no.	Description
	metal bracket for exterior cable entry	1018868	PSD-S 50 ME BR-SM-M
	bracket for vertical mounting of poles with plastic foot	1018870	PSD-S 50 ME BR-BM/HCR
	pole connection box for magnet mounting, M20	1018873	PSD-S 50 ME OB/MB-BM

New module

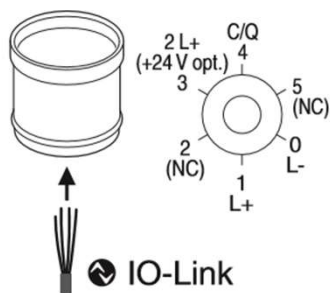
## PSD-S IO-Link

The IO-Link device is intended to be part of a modular signal tower.

This is used for issuing digital signals for controlling the modular 70 mm signal elements.

The IO-Link device is connected to an IO-Link master via an IO-Link A port.

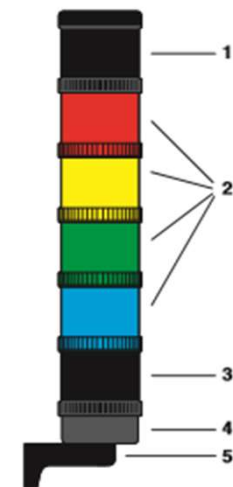
Use within different networks is possible via the IO-Link master.



1191993



PSD-S IOL



- Key:
- 1. Audible signal element
  - 2. Optical signal elements
  - 3. IO-Link device
  - 4. Connection element
  - 5. Assembly element

PSD-S in comparison to PSD-S 50

## PSD system comparison

FEATURES	PSD-S	PSD-S 50
OPERATING VOLTAGE	 24 V DC	 24 V DC
MAX. INRUSH CURRENT	500 mA	500 mA
OPERATING TEMPERATURE	-30 °C... 50 °C	-30 °C... 60 °C
DIAMETER	70 mm	50 mm



PLD E 400    PLD E 600

PLD enclosure lights

## Two product types

Class 400 (PLD E 400 ...)



Class 600 (PLD E 608 ...)



PLD enclosure lights  
**Class 400**





## PLD enclosure lights of class 400

### Optimum illumination

- Light cover with lense structure
  - Optimum illumination even in the lower area of the enclosure
- Swivel light
  - Optimum adaptation to different enclosure depths
- Light lengths 250, 375 und 500 mm
  - Optimum adaptation to different enclosure widths



## PLD enclosure lights of class 400

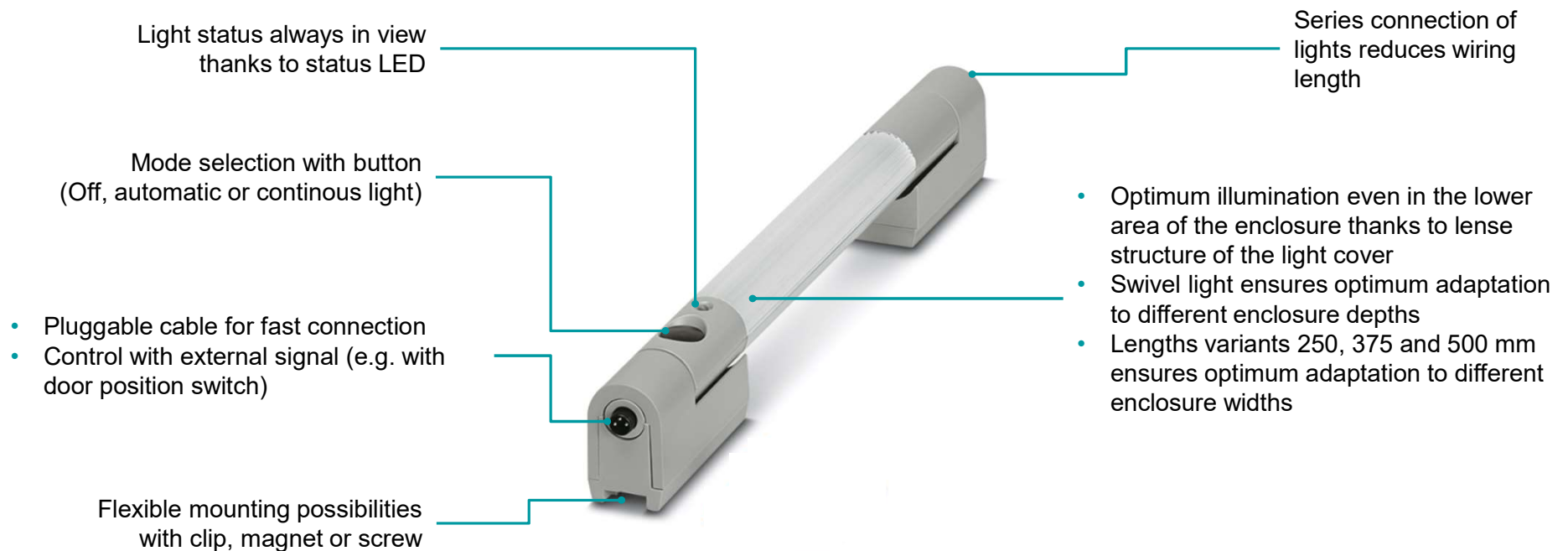
### Flexible control and mounting

- Controllable with
  - Integrated button
  - External door position switch
  - Flexible light control
- Series connection
  - Low installation costs due to less cabling



# PLD enclosure lights of class 400

## Features and benefits at a glance



## PLD enclosure lights **Class 600**



# PLD enclosure lights of class 600

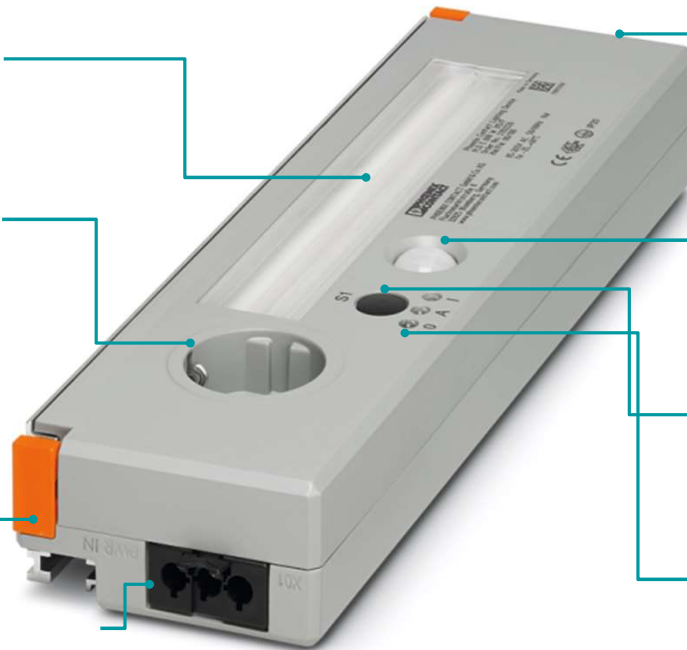
## Features and benefits at a glance

Optimum illumination even in the lower area of the enclosure thanks to integrated optics

Country-specific sockets allow external devices to be operated even with a de-energized enclosure

Flexible mounting possibilities with snap-fit system, magnet or screw

- Pluggable cable for fast connection
- AC wide-range input for worldwide use



Series connection of lights reduces wiring length

Integrated motion sensor saves on MRP and installation costs for door position switches

Mode selection with button (Off, automatic or continuous light)

Light status always in view thanks to three status LEDs

Status

**Availability**   **PLD E 400**   **PLD E 600**

Order from them that cover next 12 months

NOM Certificates have been renewable for 1 year   Q1-2021



# Thank you

Antonio Gordillo / 21 Mayo 2021 / Marketing Automation

