



ZUKEN®

Interface
PROJECT complete
ZUKEN E3.series

From planning through to the finished control cabinet

Intuitive configuration, intelligent functions, and a customizable user interface: PROJECT complete software is the innovative solution for the straightforward planning of your terminal strips and the easy creation of the corresponding markings.



- Perfect integration with optimized interfaces to all common CAE programs
- Intuitive software operation, clear and convenient with customizable user interface
- Quick and easy ordering of terminal strips in real time with direct connection to the Phoenix Contact e-shop
- Comprehensive process support from planning through to the fully assembled and professionally marked DIN rail



Video: Control cabinet
manufacturing with the
PROJECT complete planning
and marking software

Contents

Perfect CAE integration	4
-------------------------	---

PROJECT complete planning	
Setting up an interface	6
Exporting terminal strips from E3.series	12
Importing terminal strips into E3.series	15

Software overview	18
-------------------	----

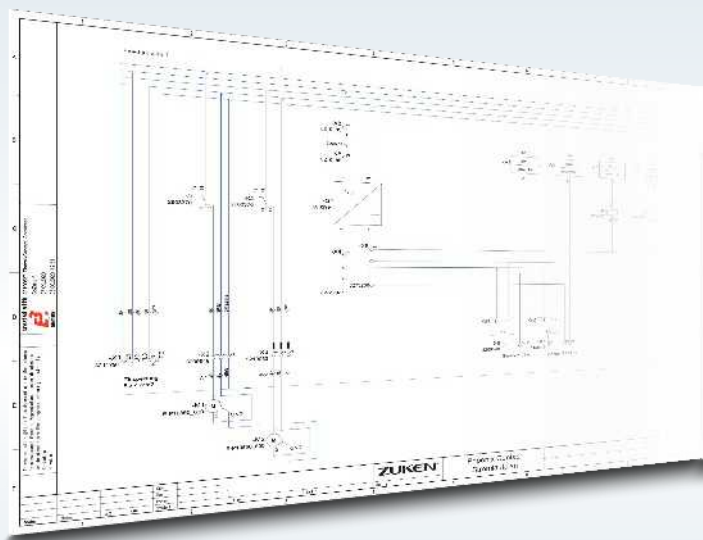
COMPLETE line



The new standard for
the control cabinet.
More information on
pages 20 to 23.

Perfect CAE integration

PROJECT complete features optimized interfaces to all common CAE programs. With just a click of the mouse, the software imports data from the electrical planning system and automatically configures the respective terminal strip. At the same time, the software automatically creates the corresponding marking solutions.



The bidirectional interface allows you to send terminal strips from the CAE program to PROJECT complete.

ZUKEN[®]

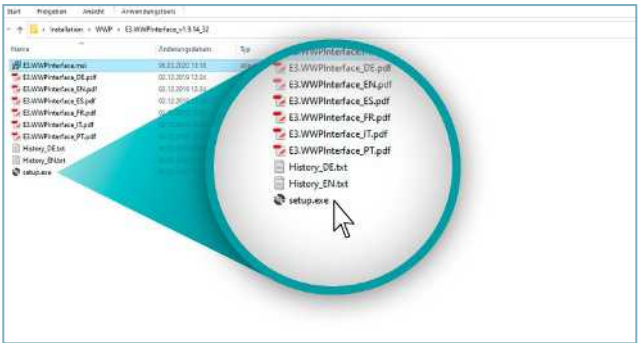
PROJECT complete planning

Setting up an interface

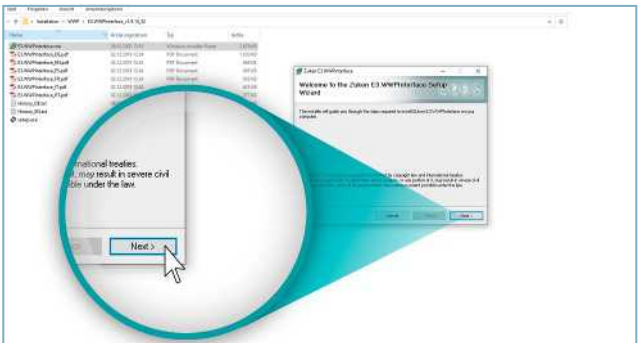
The interface between the PROJECT complete planning software and E3.series is installed in just a few clicks. Step-by-step instructions for setting up the interface in E3.series are provided below.

Both the PROJECT complete planning program and E3.series program must be closed for the installation.

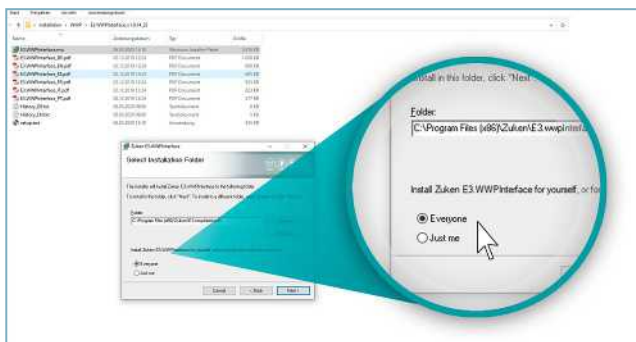
Setting up an interface in E3.series



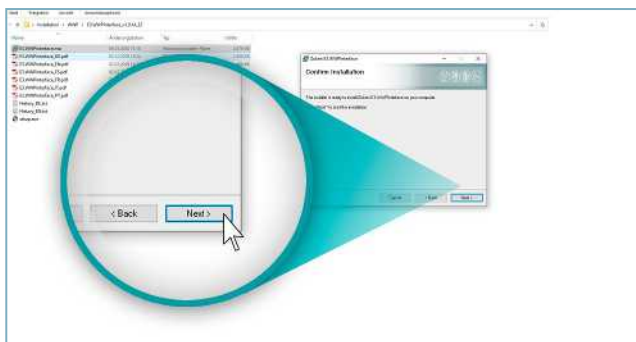
Start the installer by double-clicking on the file.



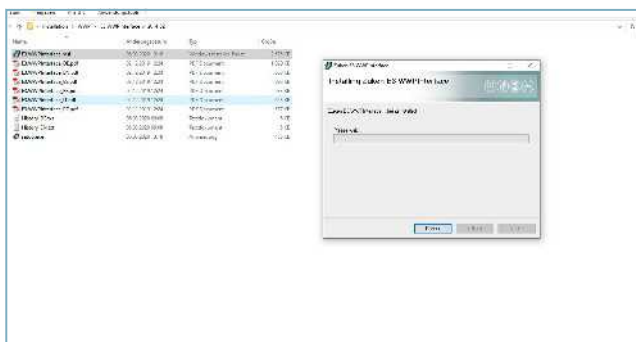
A pop-up window will open; confirm with “Next”.



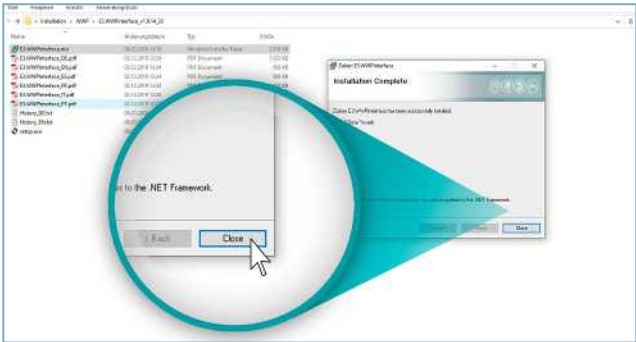
Select the “Everyone” checkbox and confirm with “Next”.



To start the installation, confirm the subsequent pop-up window with “Next”.



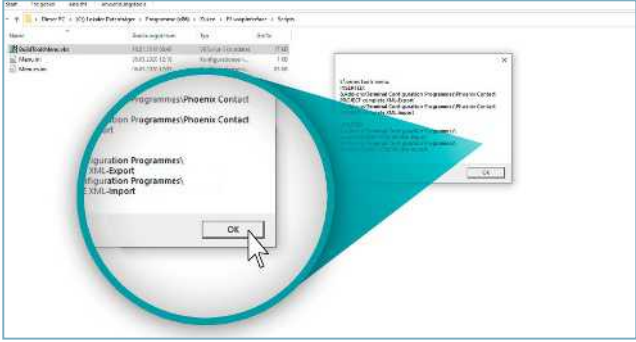
The ZUKEN E3 WWP interface will be installed.



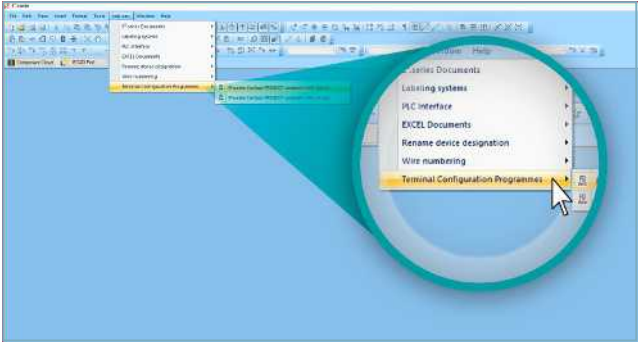
Once the installation is complete, confirm the pop-up window with “Close”.



To create the PROJECT complete planning icon in E3.series, open up the “Scripts” folder in the E3.series WWP interface installation directory and execute the respective script.



Confirm the pop-up window by clicking on the “OK” button.



You will find the icons under “Add-ons”/“Terminal configuration programmes”.

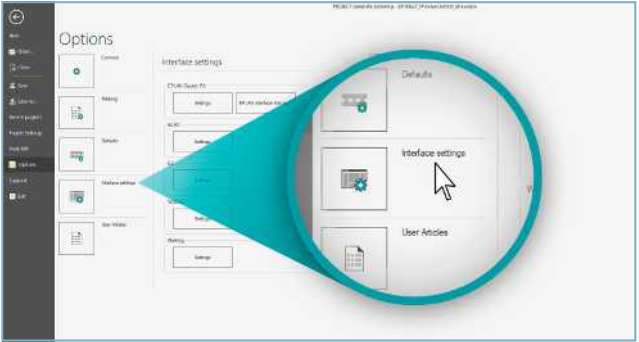
Setting up an interface in PROJECT complete planning

The following section describes how to complete the installation in the PROJECT complete planning software.

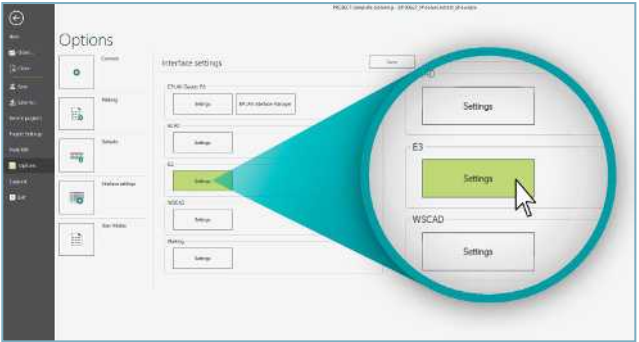
To do so, open PROJECT complete planning.



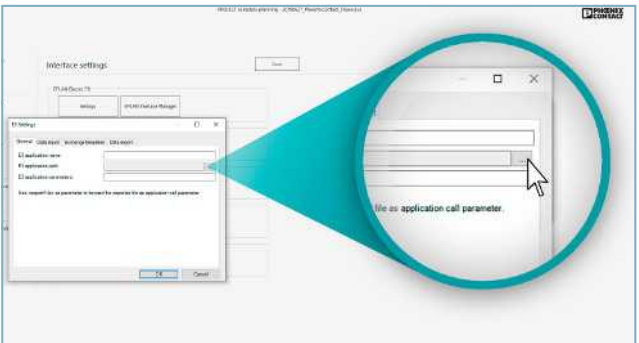
Click on “Options”.



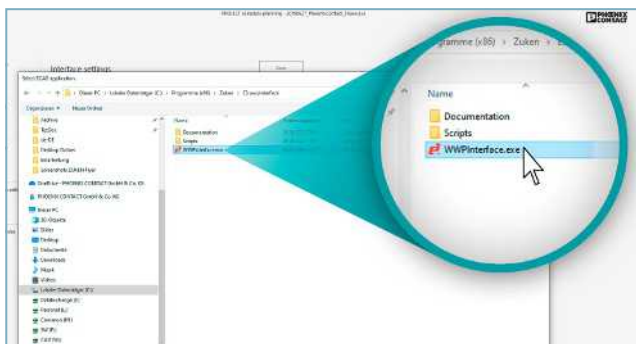
Click on the “Interface settings” button.



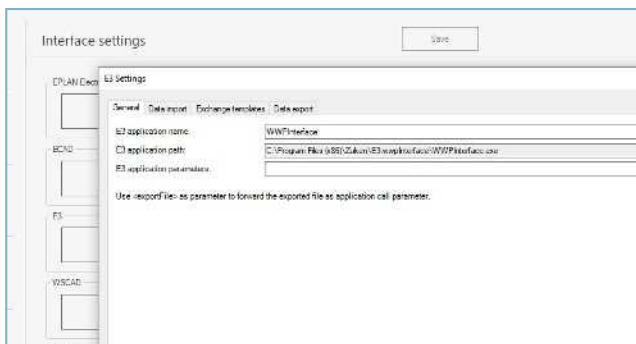
Click on the “Settings” button under the E3 heading.



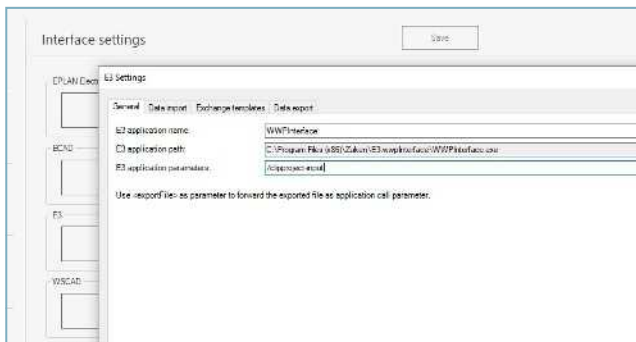
Select the interface under “E3 application path”.



Select the file “WWPInterface.exe” from the directory.
Confirm with “Open”.



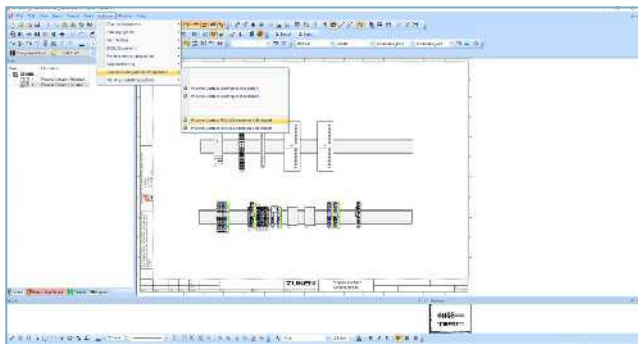
The interface will be configured automatically.
The WWP interface has been integrated into
PROJECT complete planning.



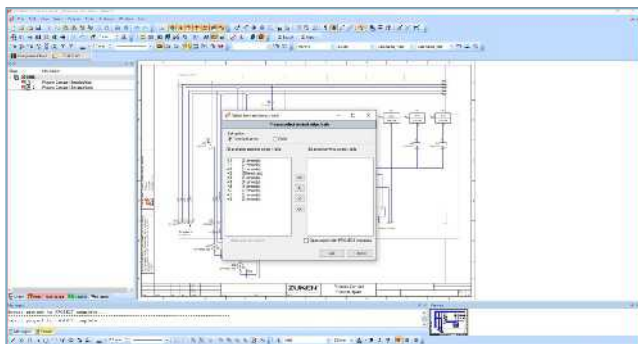
In order for the exchange file to be saved and automatically
imported/updated in E3.series at the same time,
enter “/clipproject-input” under “E3 application parameters”.

PROJECT complete planning

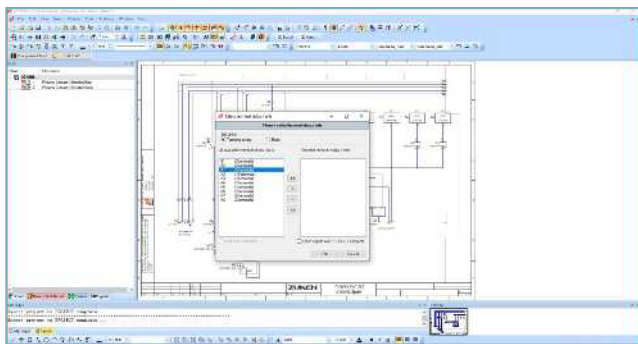
Exporting terminal strips from E3.series



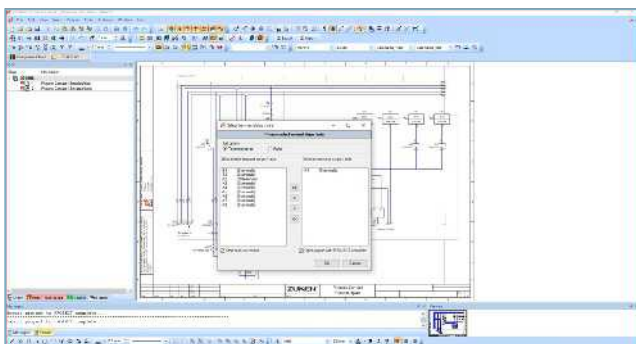
Start the interface via the menu “Tools/Terminal strip configurators/Project complete/Import and export”.



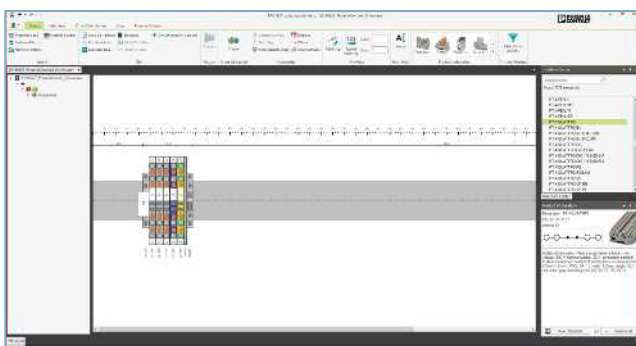
Clicking on the export function opens up a pop-up window in which you can replace the terminal strip or DIN rail.



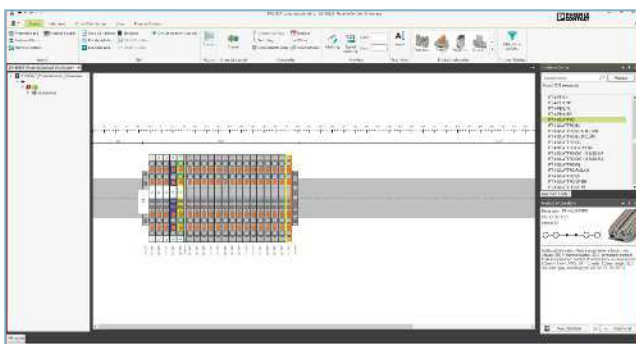
Select the terminal strip to be exported.



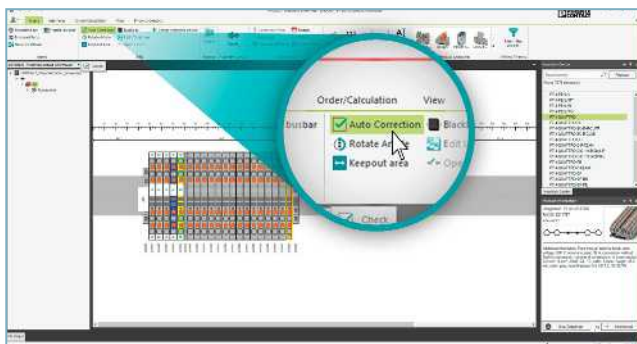
You have the option of selecting whether PROJECT complete planning is to automatically execute auto-correction with the export.



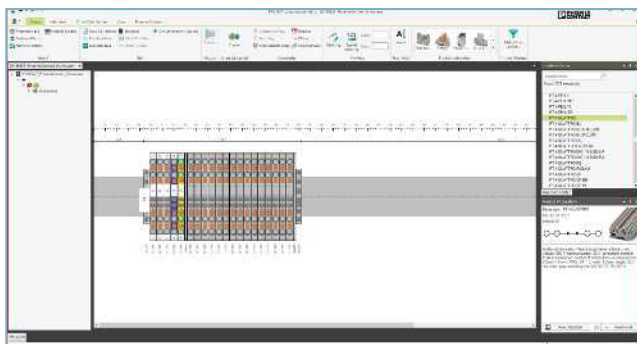
The selected terminal strip opens automatically in PROJECT complete planning and the minimum necessary accessories will be added automatically if the checkbox was selected in the previous step.



You can add further items.



Start auto-correction manually by clicking on the “Auto Correction” checkbox so that the minimum accessories needed are added again.

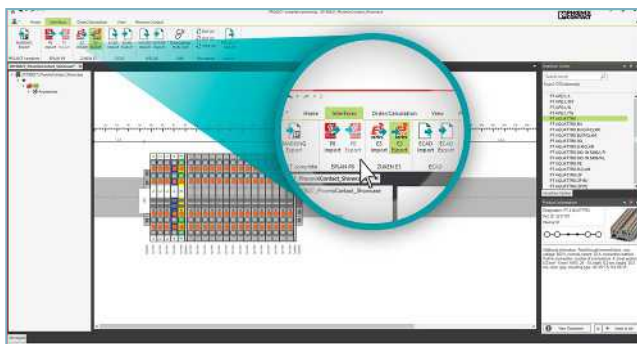


Auto-correction will be performed again and the accessories added. In this case, the terminal strip planning will be completed with the cover.

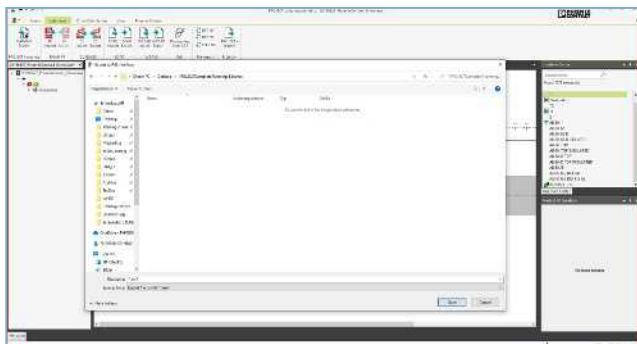
PROJECT complete planning

Importing terminal strips into E3.series

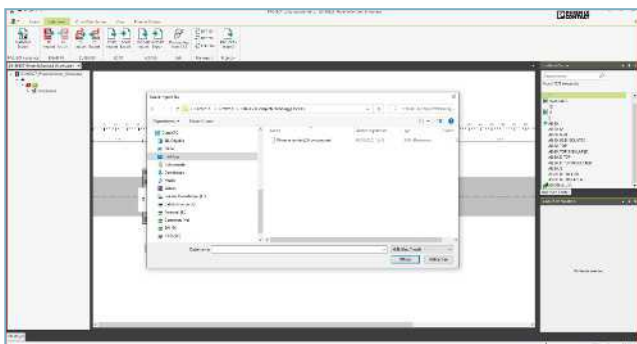
The terminal strips will be completed in E3.series once exported from PROJECT complete planning into E3.series. The accessories positioned via PROJECT complete planning and the manually added terminal blocks will be assigned to the exported terminal strips.



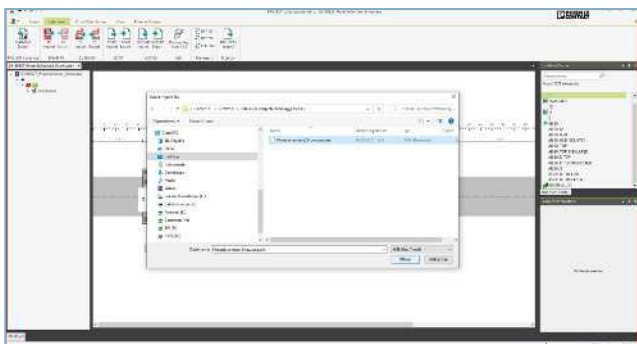
To make sure that the terminal strip is exported into E3.series again, click on “E3.series Export” in the “Interfaces” tab.



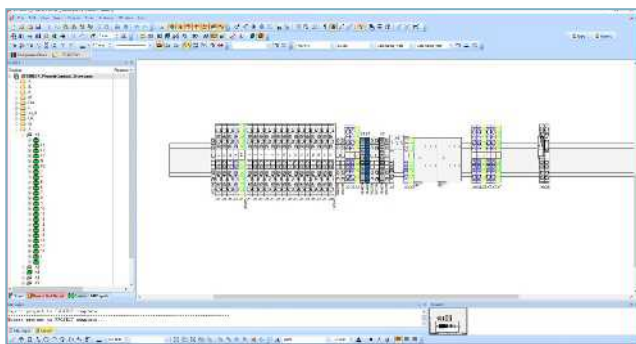
Assign a name to the exchange file and save it by clicking on “Save”.



Open the directory in which you have saved the exchange file.



Select the XML file. Confirm with “Open”.



The terminal blocks have been added in E3.series and the terminal strip has been extended.

Software overview

The PROJECT complete planning and marking software is available for download free of charge. Experience the innovative approach to realizing your project.

Link to software download:

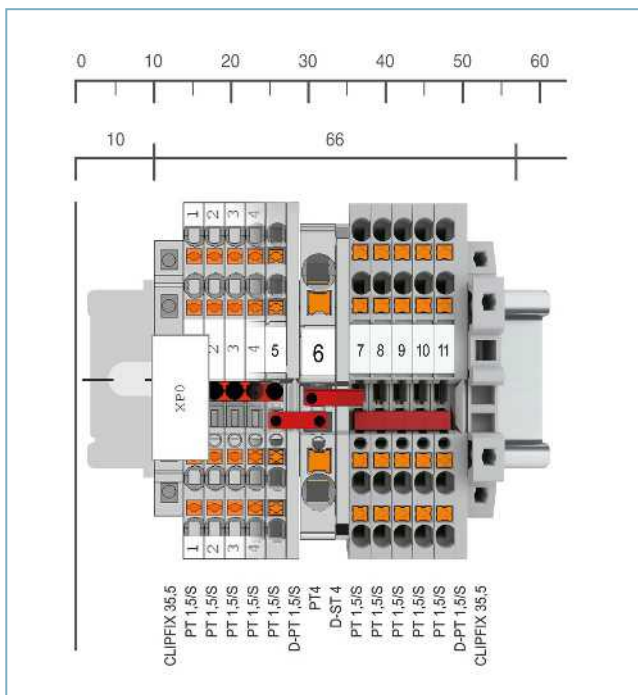
phoenixcontact.com/PROJECT_complete

Link to software tutorials:

phoenixcontact.com/Software_Tutorials



Website:
PROJECT complete – process
innovations for control cabinet
manufacturing



PROJECT complete

Order No. 1050453

CPU:

1 GHz or faster

RAM:

2 GB RAM

Hard disk space:

10 GB available memory

Screen resolution:

Recommended minimum resolution 1366 x 768 pixels

Imaging devices:

All functions are available via the mouse and keyboard

Operating systems:

Windows 7 Service Pack 1, Windows 8, Windows 8.1, Windows 10

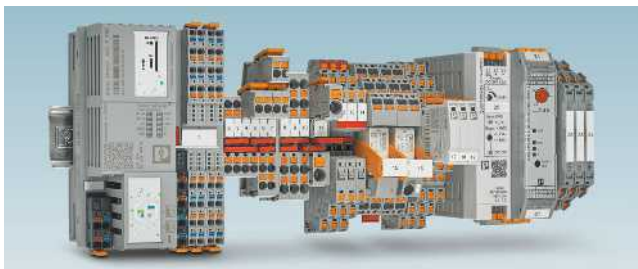
COMPLETE line – the comprehensive solution for your control cabinet

COMPLETE line is a system comprised of technologically leading and coordinated hardware and software products, consulting services, and system solutions that help you optimize your processes in control cabinet manufacturing. Engineering, purchasing, installation, and operation become significantly easier for you.





Your advantages in detail:



Comprehensive product portfolio

With COMPLETE line, we offer a complete product portfolio of technologically leading products.



Intuitive handling

Thanks to the simple, intuitive handling of the coordinated hardware products you will save time regarding assembly, startup, and maintenance.



Save time throughout the entire engineering process

PROJECT complete planning and marking software supports the entire process of control cabinet manufacturing.



Reduced logistics costs

Reduced variety of parts with standardized marking, bridging, and testing accessories.



Optimized processes in control cabinet manufacturing

COMPLETE line supports you, from engineering through to manufacturing, in making your control cabinet production as efficient as possible.

COMPLETE line

The new standard for the control cabinet

Discover the extensive COMPLETE line product range and find out more about COMPLETE line and the comprehensive solutions for your control cabinet.

Visit our website:

phoenixcontact.com/completeline

phoenixcontact.com

