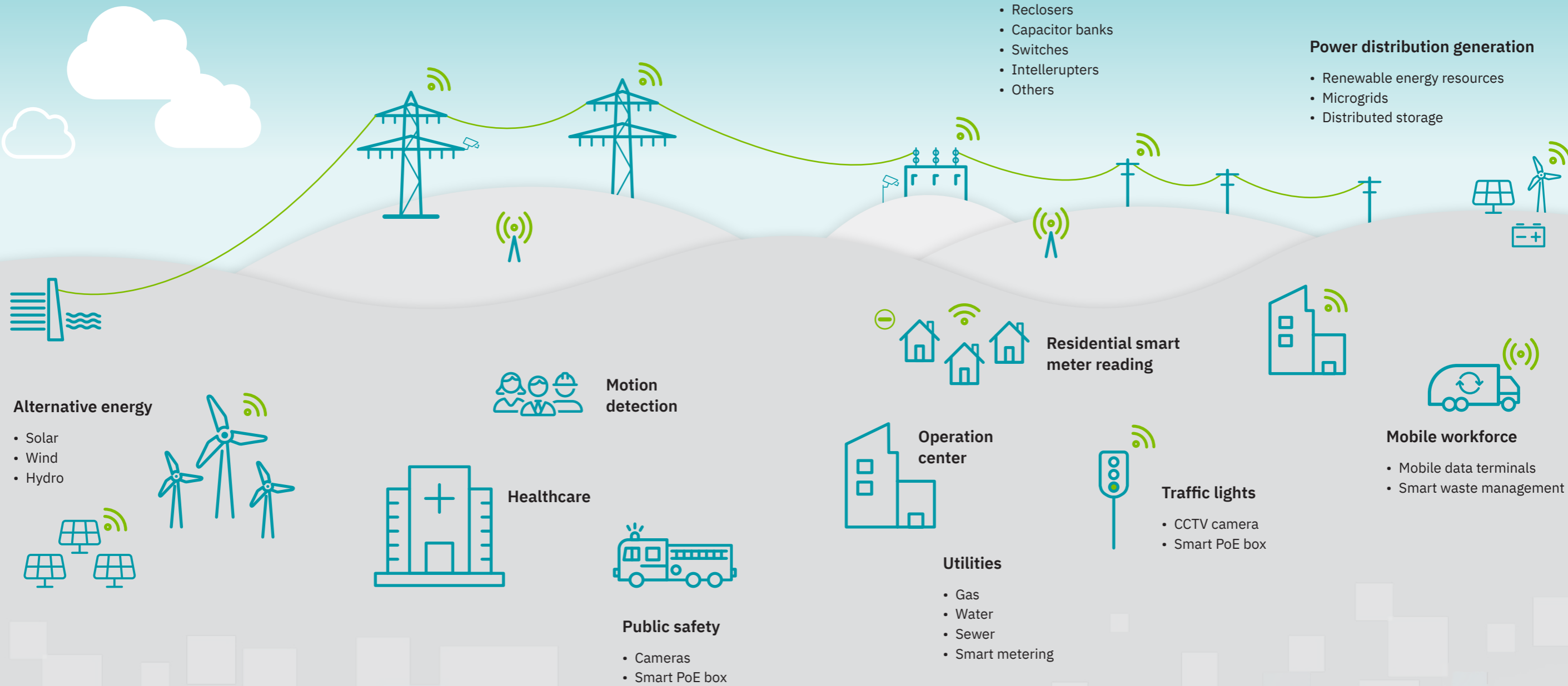




## Wireless technology and 5G IoT automation solutions

# 5G IoT automation solutions

- Telecom / Industrial 5G
- Smart networks / Data connections
- Complete product solutions
- Cloud automation solutions
- Edge data centers
- Custom engineering solutions



# Telecom and 5G smart industrial IoT

Telecommunication is the transmission of information over distances using electronic means such as phones, radios, and the internet. It enables communication between people and devices across the globe.

5G technology is the latest standard for mobile networks. It offers significantly faster data speeds, lower latency, and greater capacity than previous generations. This enables more reliable and efficient connectivity for a wide range of devices, including those in the Internet of Things (IoT) and advanced applications like virtual reality.



## Telecommunication between people and devices across the globe, including:

- Global connectivity
- Information exchange
- Mobile communication
- High-speed data transmission
- Digital communication

### Phoenix Contact can connect you with:

- Video surveillance
- Broadband
- Edge data centers
- Surge protection
- Power supplies



## Smart networks/Data connections

Phoenix Contact is your key partner for reliable data connections. Intelligent devices are becoming increasingly networked, and the number of interfaces is rising steadily. Put your trust in our reliable data connectors for the future-proof networking of all communication devices. We understand the challenges

you face in future-proof data connectivity, and we will support you with our consulting expertise, including:

- Input/Output (I/O)
- Power reliability
- Power over Ethernet (PoE)



# Complete product solutions

Our wireless solutions collect and move data. We carry all the components necessary to create a complete network capable of moving all your data and communications. Now you can obtain all your requirements from one supplier.



### Switches

With the new FL SWITCH 1000 series Ethernet switch, the most sought-after features have been consolidated to boast reduced overall size, mounting options, AC/DC power, cost-effectiveness, and more. Upgrade your entry-level and edge network applications with the market leader in unmanaged industrial Ethernet switches.



### Antennas

Easylink Pro is a complete wireless bridge kit. It comes with everything you need to create a high-speed wireless Ethernet bridge. Just unpack the material, mount the hardware, plug in the Ethernet cables, and you have a high-speed wireless Ethernet connection for a distance of up to two miles.



### Portables

M2M portables make remote support easy, secure, and cost-effective. Eliminate travel expenses for support personnel. Ship to site and simply plug it in to establish a secure, cellular VPN connection to provide remote access for startups and support. The rugged package is a stronger design than commercial VPNs. This provides an excellent option for emergency response and disaster recovery when primary communications are unavailable or when allowing remote access to equipment while isolating from a plant/enterprise network.



### Smart PoE boxes

The Smart PoE box is an all-in-one device that provides reliable data communication for up to four Power-over-Ethernet (PoE) devices via the internal Ethernet switch. The uplinks to the video center are standard Ethernet or fiber optic made easy with an integrated fiber-optic splice cassette. The IP67 housing and wide temperature range enable reliable use in harsh environments. The integrated surge protection and door opening sensor provide additional reliability and security.



### Ready-to-Use (RTU) enclosures

RTU enclosures simplify the installation of communication devices and control components. These pre-wired, UL-listed control cabinets include surge protection, circuit breaker, power supply, and power distribution for 24 V DC devices with an optional backup UPS system. Assembling a control cabinet could not be easier.

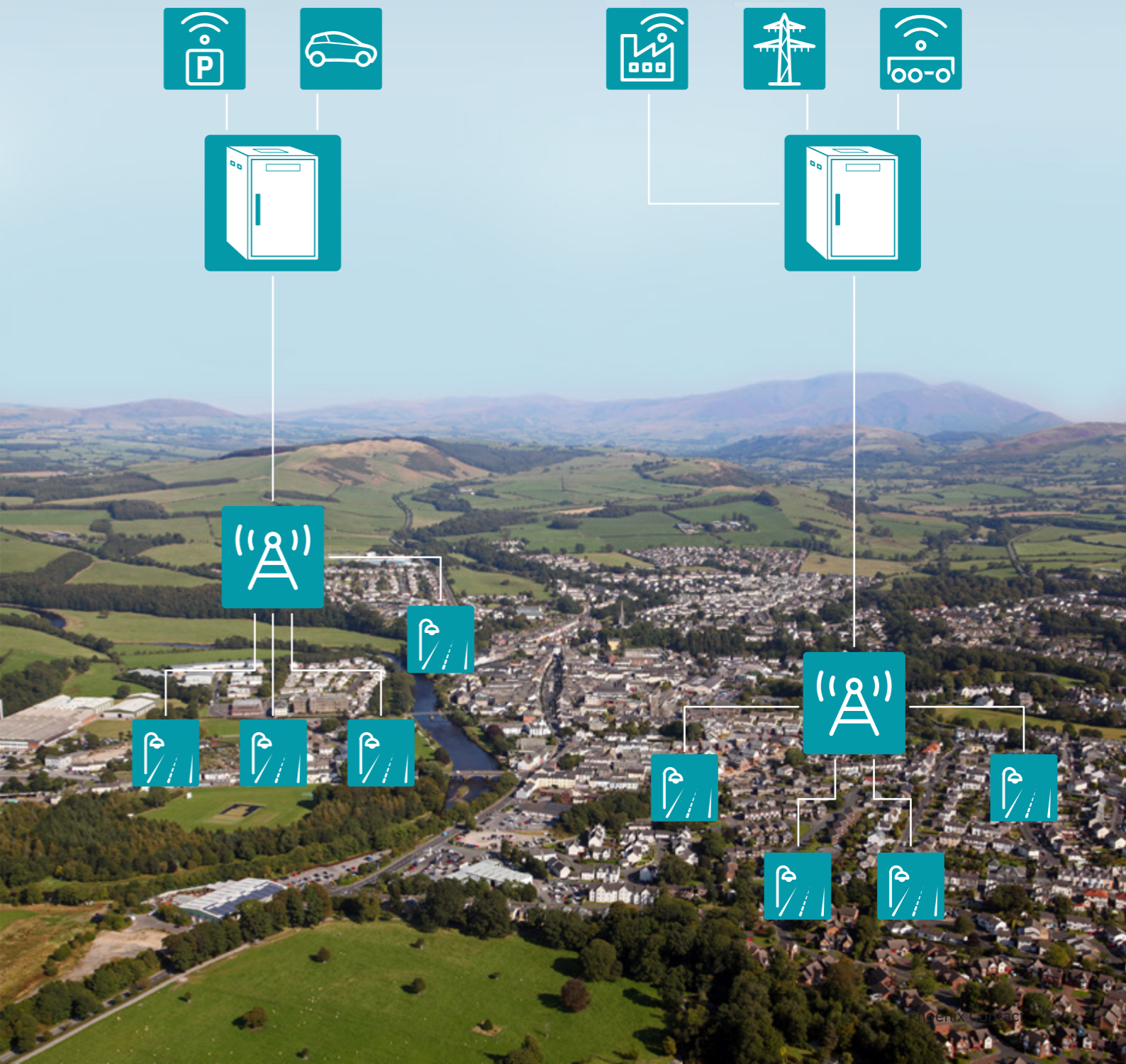


### Radio solutions

The eWAV EW75000 series is a family of hardened IP65 outdoor wireless bridge subscriber units providing remote high-speed wireless connectivity. Comprised of high-power IEEE 802.11ac MIMO wireless radios with gigabit IEEE 802.3at PoE connectivity, the series is hardened against extreme temperatures and water ingress for harsh and demanding environments.

# Cloud automation solutions

Keeping up with emerging technologies in automation can be a daunting task. Whether you are looking to integrate IoT and open automation concepts into an existing system or a new development, Phoenix Contact can help. With years of experience and our PLCnext product line, our engineering team has the capability to take your data from the sensor to the cloud with ease. With the emergence of technologies such as GitHub and Docker, complex functionality is available and can be integrated into your system with greatly reduced research and development effort.



# Edge data centers

Edge data centers are small, decentralized facilities located closer to where data is generated and consumed. They provide compute and storage resources at the periphery of a network, which helps reduce latency and optimize bandwidth. This proximity to end users allows for real-time data processing, making edge data centers crucial for applications requiring low latency, such as those with IoT and 5G technologies.

- ✔ Decentralized, local DC power to ensure low latency
- ✔ Modular and scalable

## CLOUD LAYER

- Central control
- Data storage and management
- Big data processing



## FOG AND EDGE LAYER

- Real-time data processing
- Real-time control



## ACCESS DEVICES

- Smart devices and vehicles
- Connected systems
- Data collection

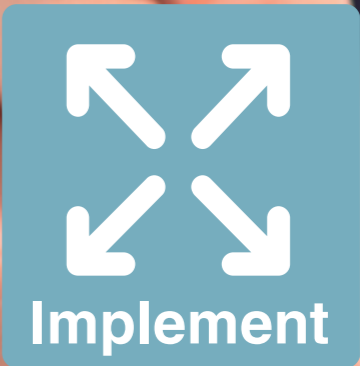


# Engineering design and services

Our engineering expertise and knowledge of components and industrial systems allows us to provide customer-specific solutions. Most projects are not simply cut and dry. An engineered solution might be just what you need. In order to meet your objectives, we analyze your requirements and adapt them in accordance with relevant industry standards. Our engineers will assist in the planning, design, testing, and implementation of your solution.

## We are equipped to offer:

- ✔ Control cabinet design
- ✔ Technology and product selection
- ✔ Communication protocols
- ✔ Programming
- ✔ System simulation and validation
- ✔ Long-term support



## Open communication with customers and partners worldwide

Phoenix Contact is a global market leader based in Germany. We are known for producing forward-thinking products and solutions for the comprehensive electrification, networking, and automation of all sectors of the economy and infrastructure. With a global network, we maintain close relationships with our customers, something we believe is essential for our common success.

You can find your local partner at  
[phoenixcontact.com](https://phoenixcontact.com)

