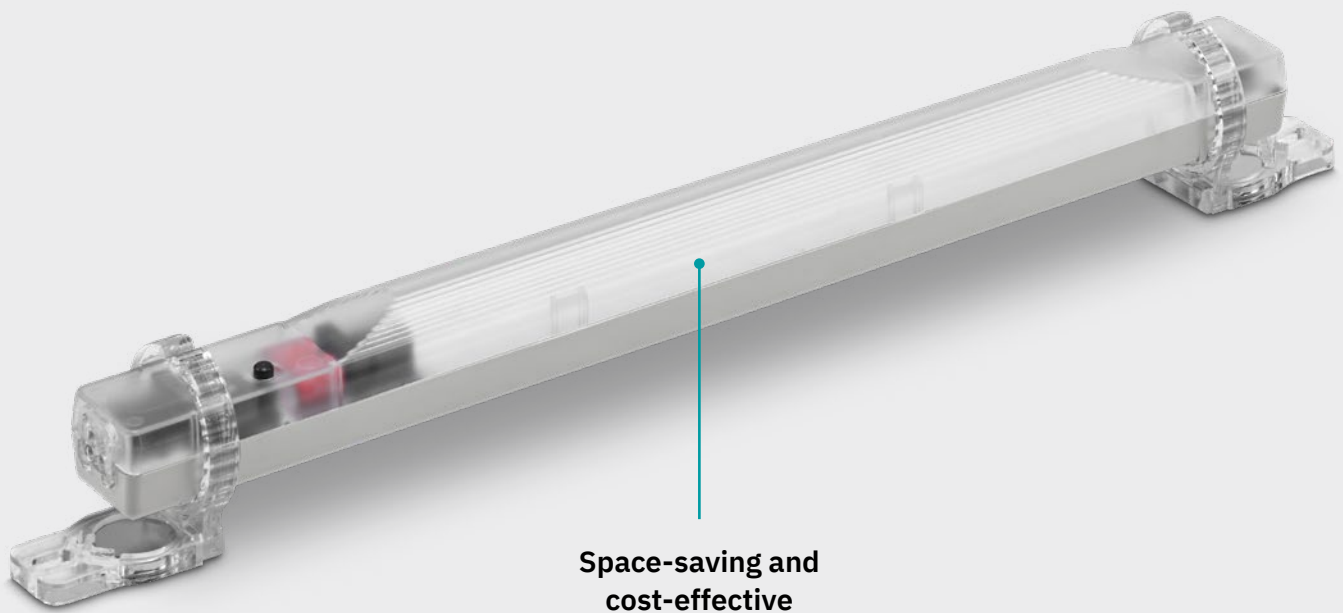


## Lighting and signaling

More than just light

## PLD enclosure lights

PLD enclosure lights (Phoenix Contact Lighting Devices) provide optimum lighting for your control cabinet, even at the very bottom of the cabinet, and are easy to install without tools. Whether with an integrated motion sensor or in conjunction with a door contact switch, the lights can be fully adapted to your requirements.

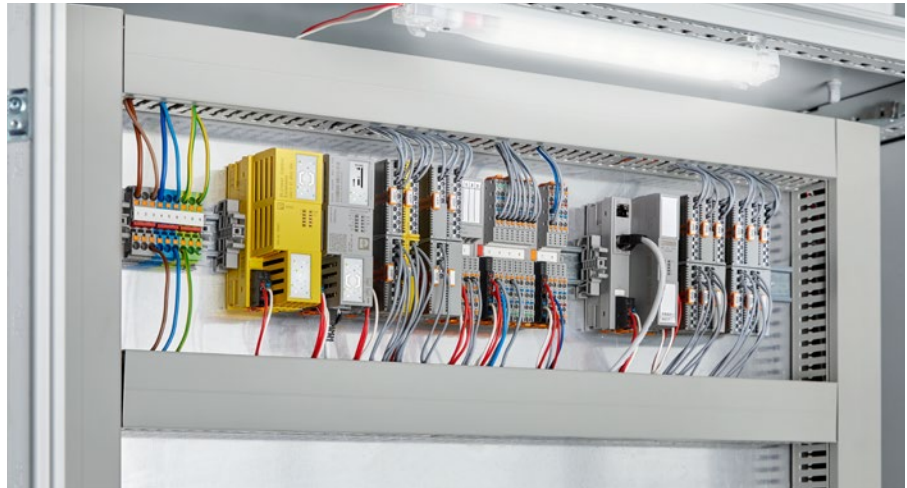


# Optimum illumination, quick installation

## Space-saving and cost-effective

The enclosure lights are characterized by optimum lighting of the control cabinet interior, even at the very bottom of the cabinet, with high-quality optics. The wide-range power supply of 24 to 240 V AC/DC enables worldwide use. The Push-in connection technology guarantees quick and easy installation of the lights. The light can be swiveled in increments, and the delivery includes both screw and magnetic mounting options, providing you with a high degree of flexibility. This is also the case in terms of controlling the lights. You have the choice between a version with integrated motion sensor or with a connection to a door position switch.

- Optimum illumination of the entire control cabinet with high-quality optics
- Worldwide application options with wide-range power supply
- UL approval for use on the North American market
- Push-in connection saves time during cabling
- Long LED service life eliminates maintenance effort and the need to replace lights



*Installation via magnetic mounting*

For further information on the product details, simply enter the web code in the search field on our website.

 **Web code: #2620**

## Door position switch

The door position switch is used to automatically switch the enclosure lights on and off without an integrated motion sensor when opening and closing the control cabinet door. If the lights are connected in series, you can use the switch at any chosen position upstream of the first light or between two lights.

### Main features:

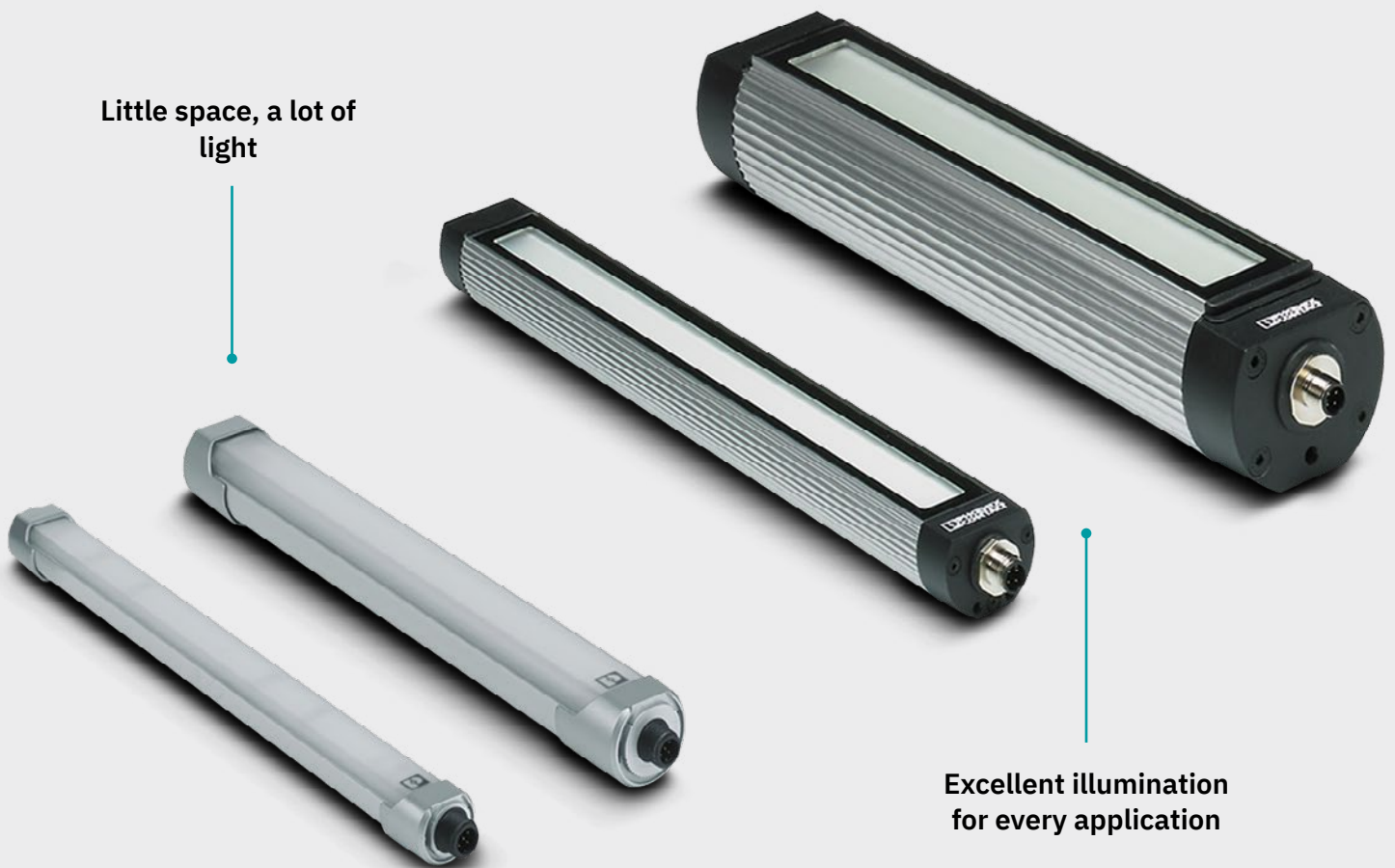
- Suitable for serial connections
- Two free ends for quick Push-in connection
- UL approval
- Standard switch in accordance with DIN EN 50047



*Door contact switch available as an accessory*

# PLD machine lights

PLD machine lights (Phoenix Contact Lighting Devices) enable you to achieve optimum illumination for your machine, even under harsh ambient conditions. These lights are characterized by their application-oriented IP protection classification, operation at higher temperatures, and improved resistance to mechanical influences. Choose the appropriate LED light for your application from two performance classes.



## Variety for optimum illumination

### Little space, a lot of light – class 100

Featuring the latest LED technology, the class 100 PLD M machine lights are characterized by their strong, homogenous light combined with a compact, modern design. Due to the application-oriented IP54 degree of protection, the included mounting accessories, and the integrated M12 connection technology, they offer all this at an optimum price/performance ratio. Class 100 can be flexibly adapted to numerous lighting tasks. This allows for lengths from 195 mm to 895 mm, two diameters of 25 mm to 35 mm, and an adjustable installation angle.

- Can be mounted easily in confined spaces due to the narrow design
- Focused illumination due to swivel action
- ETL approval for use on the North American market
- Plug-in supply lines allow free choice of cable length as well as quick and easy installation



*Mounting in an insertion machine*

For further information on the product details, simply enter the web code in the search field on our website.

 **Web code: #2622**

### Excellent illumination for every application – class 200

Class 200 LED machine lights are impressive due to their bright illumination. In comparison to the class 100 LED machine lights, they are ideal for medium to large distances from the target area.

Do you need lighting in a harsh environment? These lights are also the perfect answer here because of their high vibration and shock resistance and their resistance to cooling agents and lubricants (IP67 degree of protection).

You can ideally integrate the 40 mm diameter versions into new machines. This allows you to illuminate your machine's interior extremely efficiently and without taking up too much space.

- The 4 mm safety glass enables use even in environments with potential mechanical strain
  - Resistant to many cooling agents and lubricants due to Viton® seal
  - Can be used at high temperatures and can be subjected to strong vibrations and shocks
- Flexible mounting options, as both mounting versions (bracket or holder) can be swiveled
  - ETL approval for use on the North American market



*Machine light with 70 mm diameter and clip mounting*

## PSD signal towers

Phoenix Contact offers compact signal towers with a diameter of 50 mm for confined spaces as well as signal towers with a diameter of 70 mm featuring numerous functions. Both versions feature a modular design, easy handling, plus visual and audible signaling.

The wide range of mounting element accessories provides greater flexibility for your installation. This ensures optimum visibility and clear identification of machine states.



**Compact and  
cost-effective**



**High functionality and  
optimum visibility**

## Optimum detection of machine states

### Compact and cost-effective with a 50 mm diameter

The cost-optimized LED signal tower features an attractive industrial design and is ideal for compact machines. With the innovative wiring concept, you can arrange the individual calottes in any sequence.

- Increased machine and system availability with a clear status message
- Low installation costs with tool-free setup and various mounting options
- Modular design means that the signal tower configuration can be changed quickly
- High degree of protection ensures reliability in harsh industrial environments



*Signal tower assembled with three color calottes*

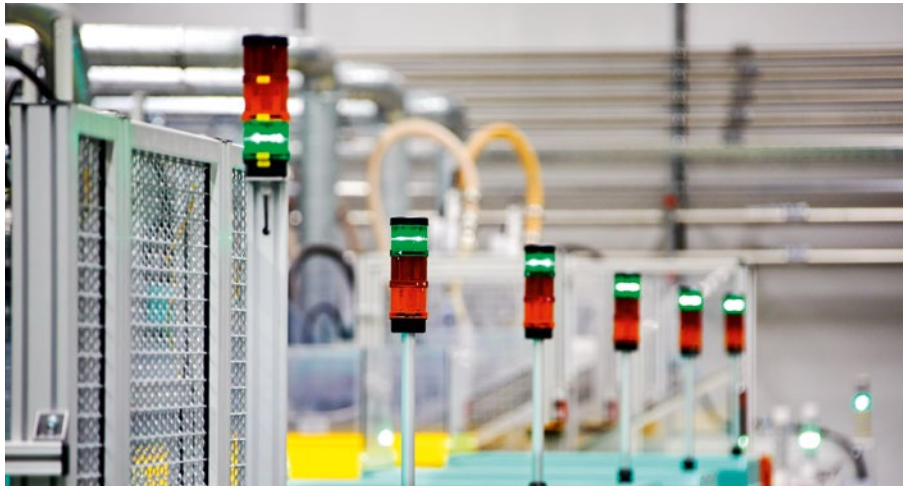
For further information on the product details, simply enter the web code in the search field on our website.

 **Web code: #2624**

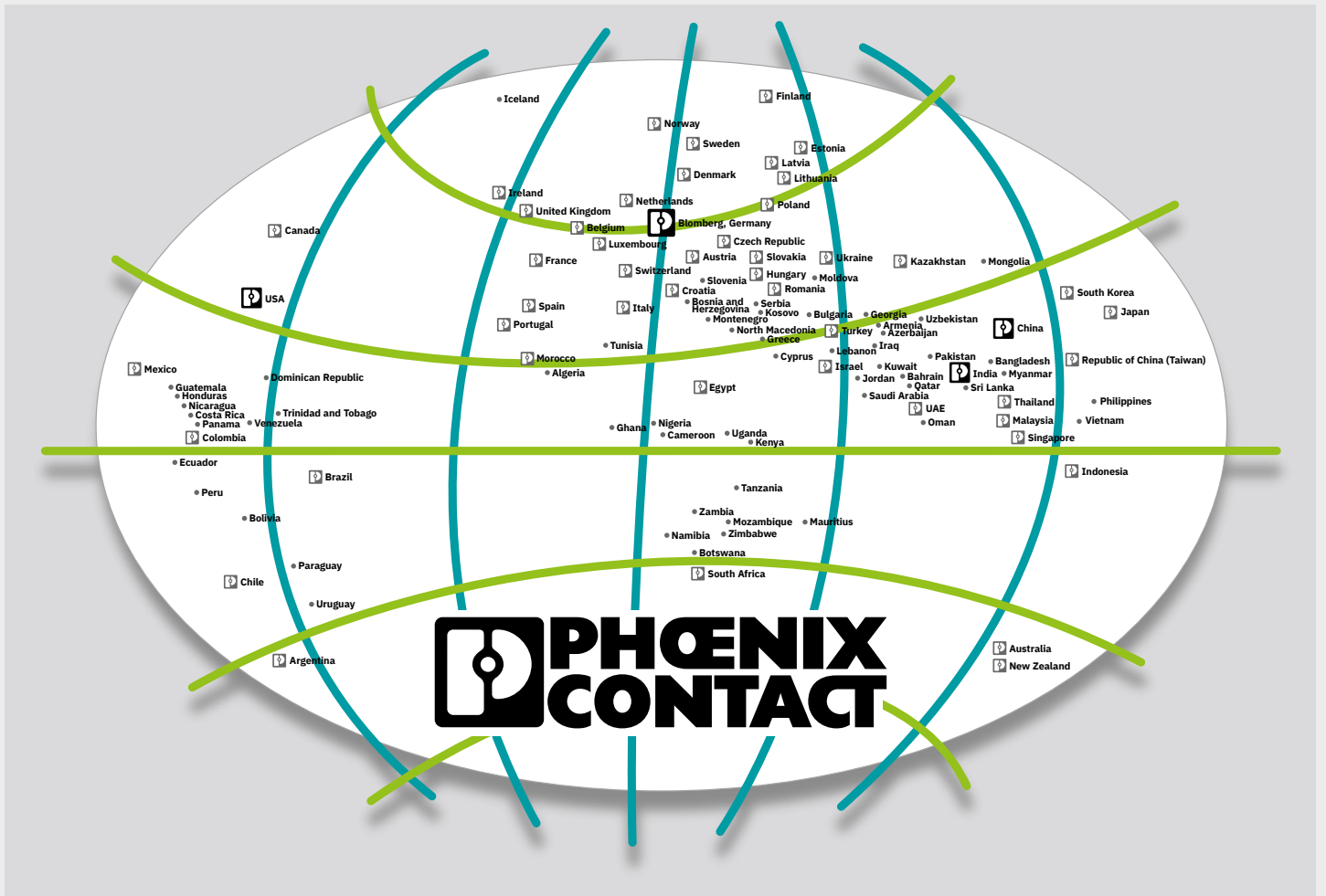
### Greater functionality with a 70 mm diameter

With the modular signal towers, you can combine visual and audible signal elements flexibly, however you need them. The modular design also allows you to retrofit additional elements at a later time. The signal tower elements are connected mechanically and electrically in seconds with the bayonet lock.

- Large selection of visual and audible elements
- Control via IO-Link interface
- Fast mounting with bayonet lock
- Wide range of applications due to UL approval
- IP65 degree of protection



*Signal towers with tube mounting*



## Open communication with customers and partners worldwide

Phoenix Contact is a global market leader based in Germany. We are known for producing future-oriented products and solutions for the electrification, networking, and automation of all sectors of the economy and infrastructure. With a global network reaching across more than 100 countries with over 22,000 employees, we maintain close relationships with our customers, something we believe is essential for our common success.

Our wide range of innovative products makes it easy for our customers to implement the latest technology in a variety of applications and industries. This especially applies to the target markets of energy, infrastructure, industry, and mobility.

You can find your local partner at  
[phoenixcontact.com](https://www.phoenixcontact.com)

